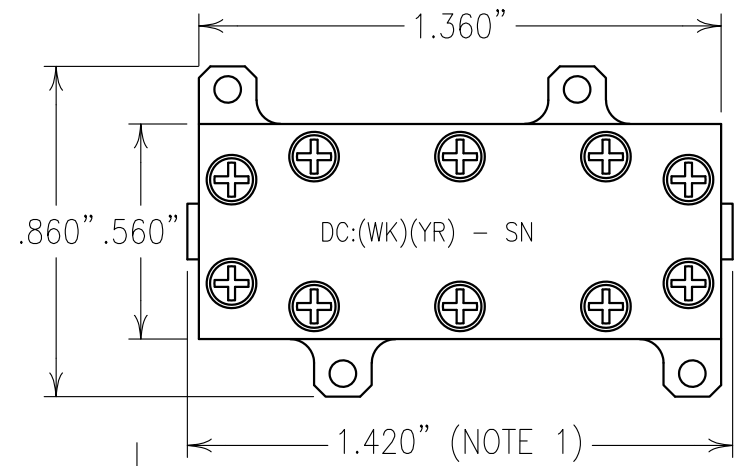
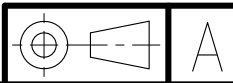


ELECTRICAL CHARACTERISTICS

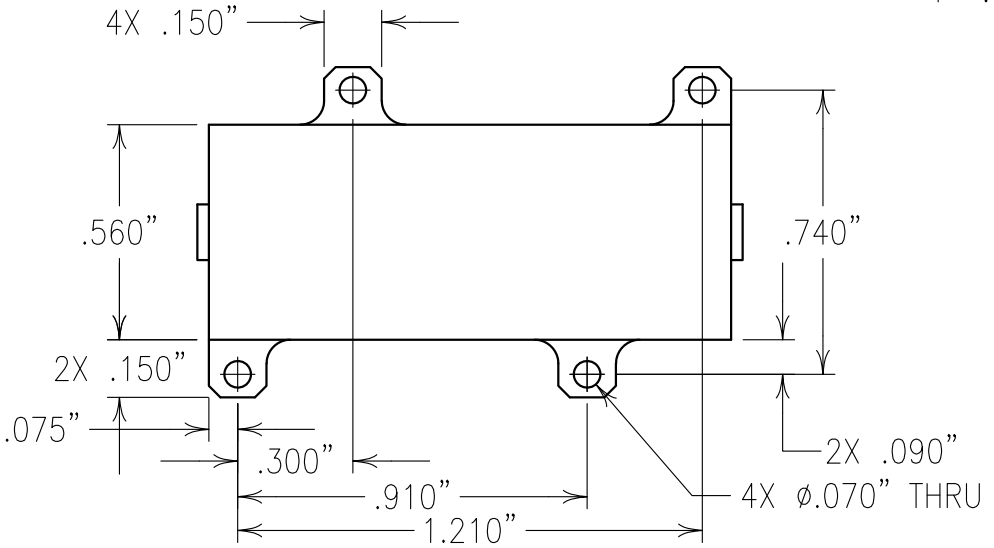
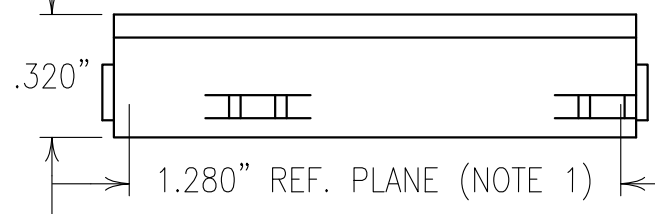
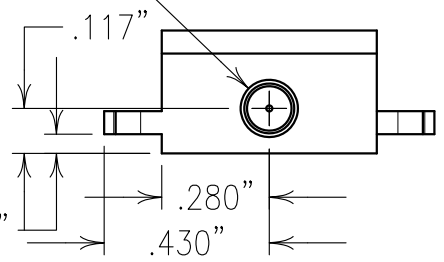
CENTER FREQUENCY: 1032 MHz NOM
 EQUI RIPPLE BW: 500 MHz NOM.
 0.6 dB PASSBAND: 780-1285 MHz
 P.B. INSERTION LOSS: 4.0 dB MAX
 PASSBAND RIPPLE: 0.6 dB MAX
 PASSBAND VSWR: 1.7:1 MAX
 REJECTION:
 60 dB MIN @ DC-595 MHz
 50 dB MIN @ 1468-3750 MHz
 IMPEDANCE: 50 OHMS I/O
 OPERATIONAL TEMP*.: -10 TO +50°C
 STORAGE TEMP*.: -40 TO +85°C
 INPUT POWER*: +20 dBm
 HUMIDITY*: -10 TO +50°C,
 NON-CONDENSING: 95%
 *DESIGNED TO MEET

COPY

NOTES:
 1. THESE DIMENSIONS DESIGNED TO MEET BASED ON THE REF. PLANES OF THE CONNECTORS.
 LID IS TO BE SEALED WITH RTV.
 FILTER MAY BE LABELED OR ETCHED.
 FILTER IS ROHS COMPLIANT.



2X SMP FULL DETENT
 INTERFACE PER
 MIL-STD-348



Confidential and Proprietary information of ComNav Engineering Inc. Do Not Duplicate or Use Without Permission. ComNav Engineering Inc. claims Copyright in this document as of the Creation, last revision, and last updated dates. All Rights Reserved.

ENGLISH / METRIC ENGLISH	CHECKED BY	B	27JUN17	KJR	DEV.	GEN. REV. PER 4131
TOLERANCES UNLESS OTHERWISE SPECIFIED MACHINED SURFACES TO BE 125 / OR BETTER REMOVE ALL BURRS	DRAWN BY	A	25APR17	KJR	DEV.	GEN. REV. PER 4107
	ENGINEER	II	18JAN17	MJG	DEV.	INI. ISS. PER 4082
	KJR	REV	DATE	BY	DCN No.	REMARKS

ENGLISH (INCHES) .XX ±.02 .XXX ±.01	METRIC (MM) .X ±.2 .XX ±.13	SCALE 2:1	APPLIC: CHIP AND WIRE FILTER
ANGLES ± 0° 30'	DATE 27JUN17	TITLE: 10BLC3-1032/Z560-SMP	SHEET OF 1 1

MATERIAL: ALUMINUM	DRAWING No.
FINISH: SILVER	OL1611

