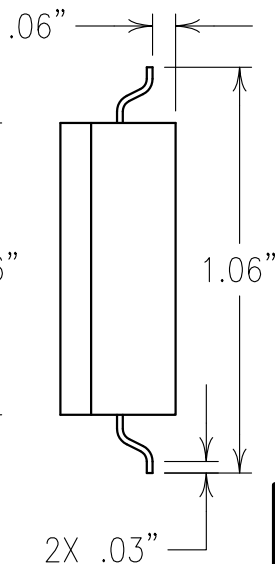
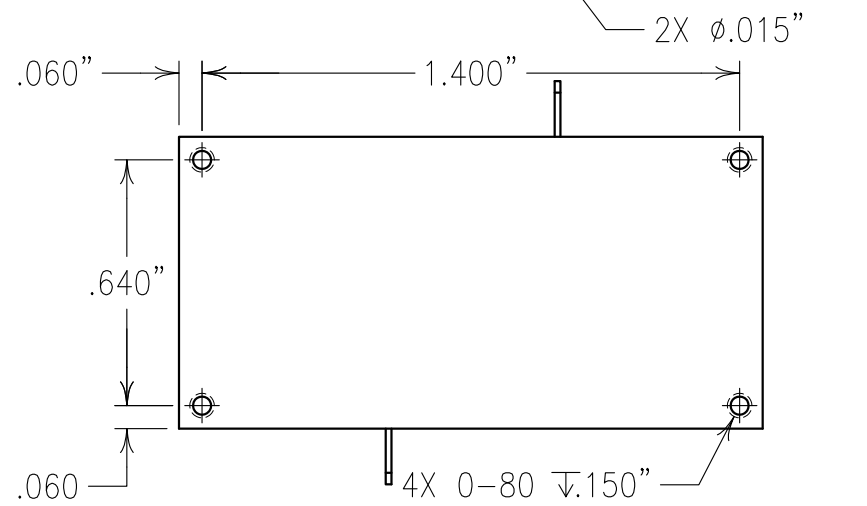
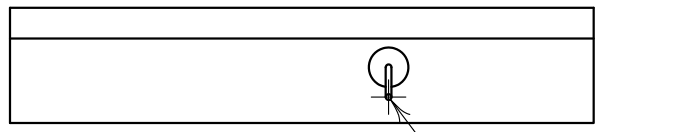
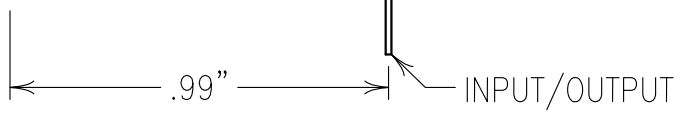
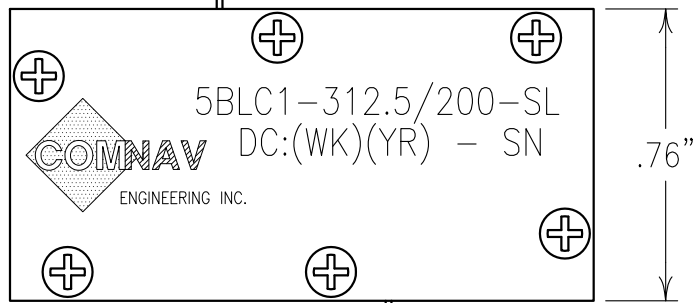
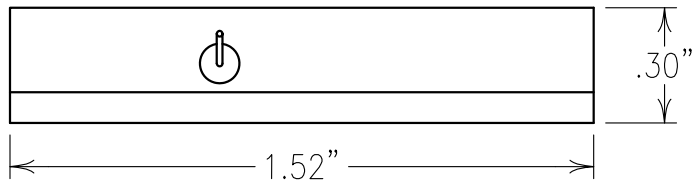


2

1



ELECTRICAL CHARACTERISTICS

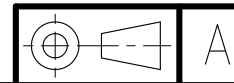
CENTER FREQUENCY:	312.5 MHz NOM
PASSBAND:	225-400 MHz
INSERTION LOSS:	3.0 dB MAX
P.B. RETURN LOSS:	1.38:1 MAX
GROUP DELAY VARIATION:	5 nSEC MAX
AMPLITUDE RESPONSE:	0.25/10 MHz ACROSS PASSBAND
NOISE FIGURE:	3 dB
REJECTION:	50 dBc MIN @ DC-100 MHz 70 dBc MIN @ 830-1250 MHz

COPY

Confidential and Proprietary information of ComNav Engineering Inc. Do Not Duplicate or Use Without Permission. ComNav Engineering Inc. claims Copyright in this document as of the Creation, last revision, and last updated dates. All Rights Reserved.

NOTES:
LEADS ARE SOLDER DIPPED PRIOR TO SHIPMENT FOR SOLDERABILITY.

FILTER MAY BE LABELED OR ETCHED.
FILTER IS ROHS COMPLIANT.



ENGLISH / METRIC ENGLISH		CHECKED BY							
TOLERANCES UNLESS OTHERWISE SPECIFIED		DRAWN BY							
MACHINED SURFACES TO BE 125 OR BETTER		PBF		II		23FEB16		KJR DEV. INI. ISS. PER 4000	
REMOVE ALL BURRS		ENGINEER		REV		DATE		BY DCN No. REMARKS	
ENGLISH (INCHES)		METRIC (MM)		SCALE		APPLIC: CHIP AND WIRE FILTER			
.XX ±.02		.X ±.2		2:1					
.XXX ±.01		.XX ±.13		DATE		TITLE: 5BLC1-312.5/200-SL			
ANGLES ± 0° 30'		01MAR16		MATERIAL: ALUMINIUM		DRAWING No.		SHEET OF 1 1	
COMNAV ENGINEERING INC.		FINISH: SILVER		0L1568					