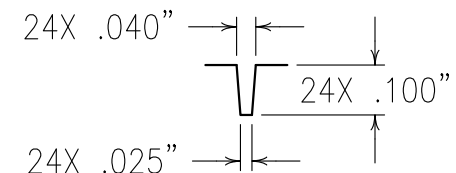
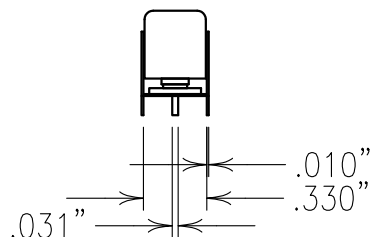
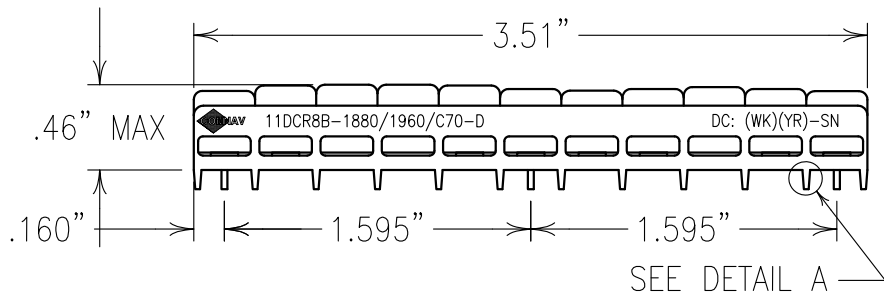


2

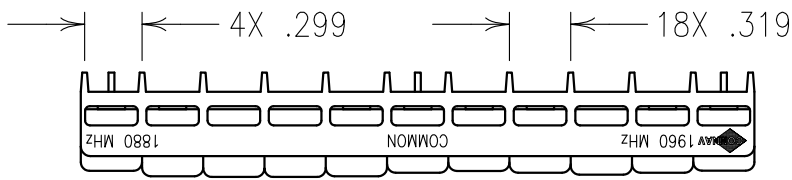
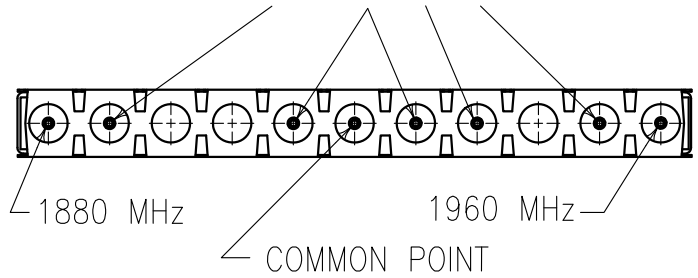
1



DETAIL A  
SCALE 2:1

**COPY**

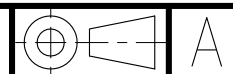
HIGH IMPEDANCE POINTS (NOTE 1)



### ELECTRICAL CHARACTERISTICS

	CHANNEL1	CHANNEL2
CENTER FREQUENCY(MHz):	1880	1960
3 dB BANDWIDTH(MHz):	70 NOM	70 NOM
PASSBAND(MHz):	1850-1910	1930-1990
PASSBAND LOSS(dB):	3.0 MAX	3.0 MAX
VSWR:	1.7:1	1.7:1
REJECTION(MHz): 45 dBc MIN @:	1930-1990	1850-1910
OPERATING TEMP.:	-10 TO +75°C	
STORAGE TEMP.:	-20 TO +85°C	
POWER HANDLING.:	8 WATTS CW	

Confidential and Proprietary information of ComNav Engineering Inc. Do Not Duplicate or Use Without Permission. ComNav Engineering Inc. claims Copyright in this document as of the Creation, last revision, and last updated dates. All Rights Reserved.



NOTES: FOR RECOMMENDED FOOTPRINT SEE FP0044.  
 NOTE 1 THERE MUST BE A MINIMUM OF .050 AIR BETWEEN GROUND AND HIGH IMPEDANCE POINTS. THIS MAY BE DONE BY RAISING THE FILTER OR BY DRILLING OUT THE BOARD.  
 HAND OR WAVE SOLDERING.  
 MAX REFLOW TEMP. 240°C FOR 30 SEC., OR 260°C FOR 15 SEC.  
 FILTER IS ROHS COMPLIANT.  
 FILTER MAY BE LABELED OR ETCHED.

ENGLISH / METRIC ENGLISH	CHECKED BY					
TOLERANCES UNLESS OTHERWISE SPECIFIED MACHINED SURFACES TO BE 125 OR BETTER REMOVE ALL BURRS	DRAWN BY PBF					
	ENGINEER MJG	REV	DATE	BY	DCN No.	REMARKS
ENGLISH (INCHES) .XX ±.02 XXX ±.010	METRIC (MM) X ±.25 XX ±.13	SCALE 1:1	APPLIC: CERAMIC COAXIAL FILTER			
ANGLES ± 0° 30'	DATE 01APR08	TITLE: 11DCR8B-1880/1960/C70-D				
	FINISH: BOARD:NI/AU JACKET:NI/SILVER RESONATOR:SILVER	PINS: TINNED		DRAWING No. OL1423	SHEET OF 1 1	