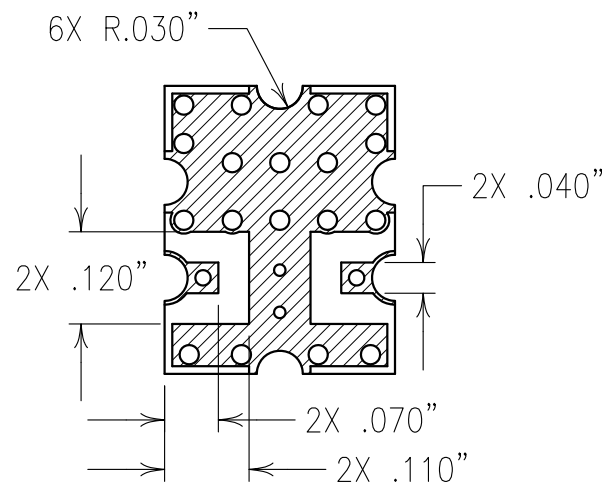
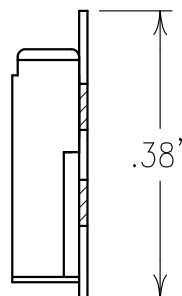
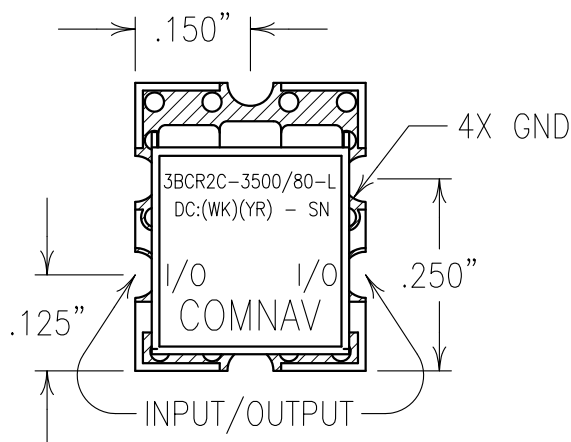
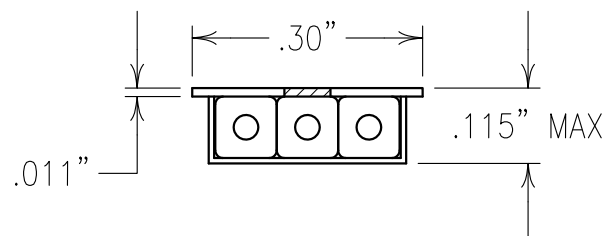


2

1

COPY

ELECTRICAL CHARACTERISTICS

CENTER FREQUENCY: 3500 MHz
 3 dB BANDWIDTH: 60 MHz MIN
 INSERTION LOSS: 3.0 dB MAX @ FO
 VSWR: 1.7:1 TYPICAL
 REJECTION:
 45 dBc MIN @ FO±250 MHz
 OPERATING TEMP.: -20 TO +75°C

NOTES:

FILTER IS ROHS COMPLIANT.
 FILTER MAY BE ETCHED OR LABELED.

Confidential and Proprietary information of ComNav Engineering Inc. Do Not Duplicate or Use Without Permission. ComNav Engineering Inc. claims Copyright in this document as of the Creation, last revision, and last updated dates. All Rights Reserved.

ENGLISH / METRIC
ENGLISH

TOLERANCES UNLESS
 OTHERWISE SPECIFIED
 MACHINED SURFACES
 TO BE 125 / OR BETTER
 REMOVE ALL BURRS

ENGLISH (INCHES)
 .XX ±.01
 .XXX ±.005
 ANGLES ± 0° 30'

METRIC (MM)
 .X ±.2
 .XX ±.13

CHECKED BY

DRAWN BY
PBFENGINEER
KJR

SCALE
 4:1
 DATE
 04MAR14

REV

DATE

BY

DCN No.

APPLIC:

TITLE:

FINISH:

JACKET:

RESONATOR:

II

28FEB14

KJR

DEV.

INI.

ISS.

PER

3769

REMARKS

CERAMIC COAXIAL FILTER

3BCR2C-3500/80-L

BOARD: NICKEL/GOLD

NICKEL/SILVER

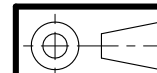
SILVER

DRAWING No.

OL1403

SHEET OF

1 1



A

A