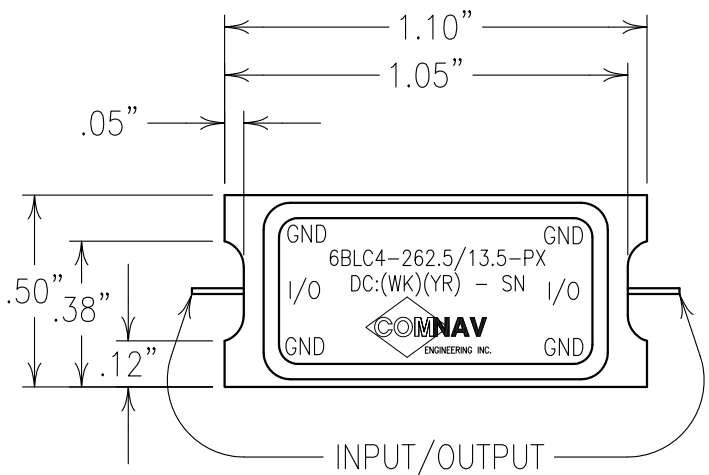
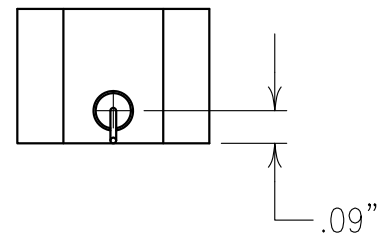


2

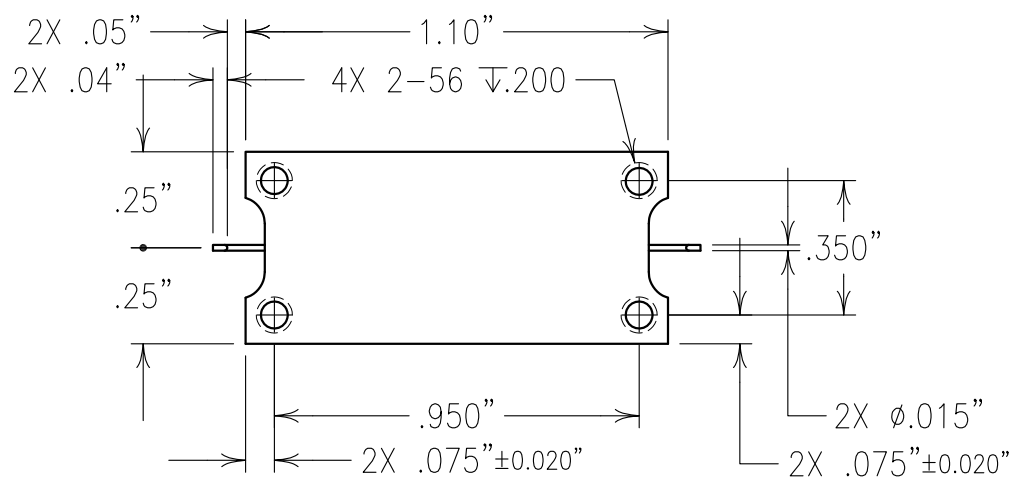
1



| ELECTRICAL CHARACTERISTICS | |
|------------------------------------|-------------------------|
| CENTER FREQUENCY: | 262.5 MHz |
| PASSBAND: | 257.5-267.5 MHz |
| P.B. INSERTION LOSS: | 7.3 dB MAX |
| P.B. AMPLITUDE RIPPLE: | 2.0 dB |
| PASSBAND VSWR: | 10 dB MIN |
| PHASE DEVIATION FROM LINEAR PHASE: | ±2.0° @ 260-265 MHz |
| REJECTION AT ROOM TEMP: | 18 dBc BW @ FO±10 MHz |
| | 45 dBc BW @ FO±17.5 MHz |
| OPERATING TEMP.: | -45 TO +70°C |
| STORAGE TEMP.: | -55 TO +85°C |
| IN/OUT IMPEDANCE: | 50 OHMS |
| INPUT POWER: | 10 dBm MAX |



COPY



Confidential and Proprietary information of ComNav Engineering Inc. Do Not Duplicate or Use Without Permission. ComNav Engineering Inc. claims Copyright in this document as of the Creation, last revision, and last updated dates. All Rights Reserved.

| | | | | | |
|---|-----------------|---------|---------|------|-------------------------|
| ENGLISH / METRIC CHECKED BY ENGLISH | B | 21JUL14 | KJR | DEV. | GEN. REV. PER 3820 |
| TOLERANCES UNLESS OTHERWISE SPECIFIED MACHINED SURFACES TO BE 125/ OR BETTER REMOVE ALL BURRS | DRAWN BY PBF | A | 21APR14 | KJR | DEV. GEN. REV. PER 3784 |
| | ENGINEER KJR | II | 06FEB14 | MJG | DEV. INI. ISS. PER 3758 |
| | REVISIONS | REV | DATE | BY | DCN No. REMARKS |

| | | | |
|---|-----------------------------------|-------------------------------|----------------------|
| ENGLISH (INCHES) .XX ±.02 .XXX ±.01 | METRIC (MM) .X ±.2 .XX ±.13 | SCALE 2:1 | APPLIC: LC FILTER |
| ANGLES ± 0° 30' | DATE 14AUG14 | TITLE: 6BLC4-262.5/13.5-PX | SHEET OF 1 1 |

| | | |
|-----------------------------------|--------------------------------------|-----------------------|
| COMNAV ENGINEERING INC. | MATERIAL: ALUMINUM FINISH: SILVER | DRAWING No. OL1397 |
|-----------------------------------|--------------------------------------|-----------------------|