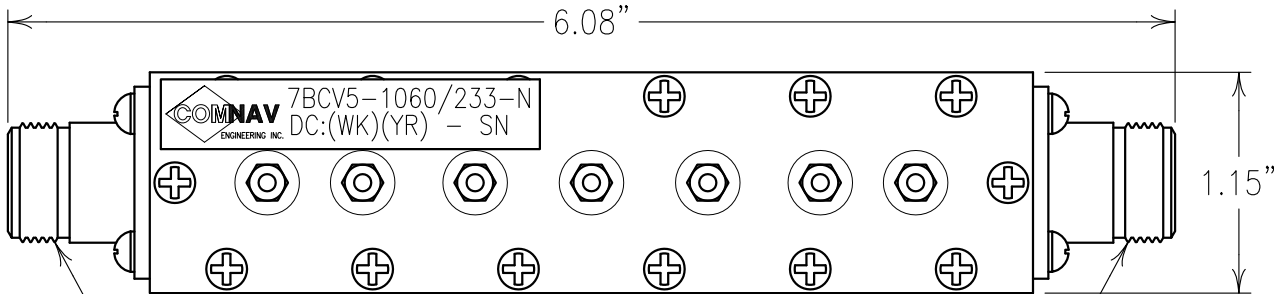
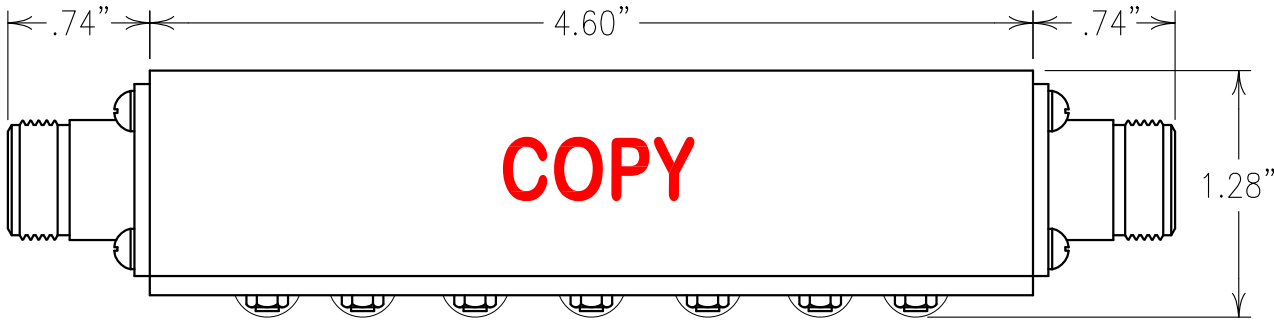
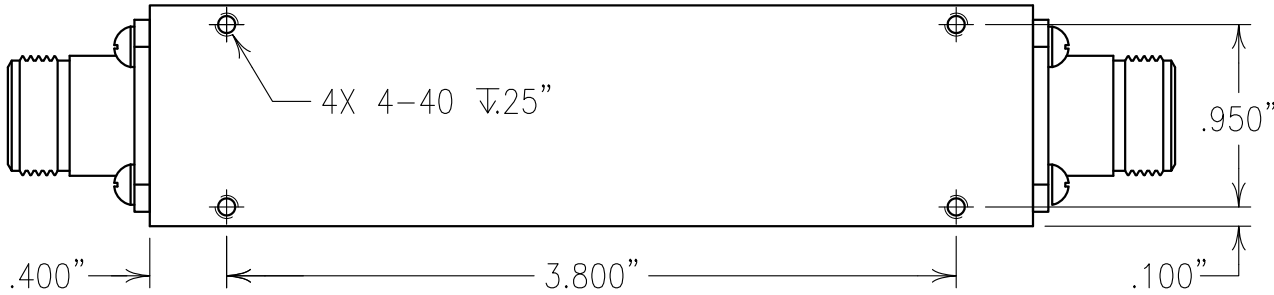


2

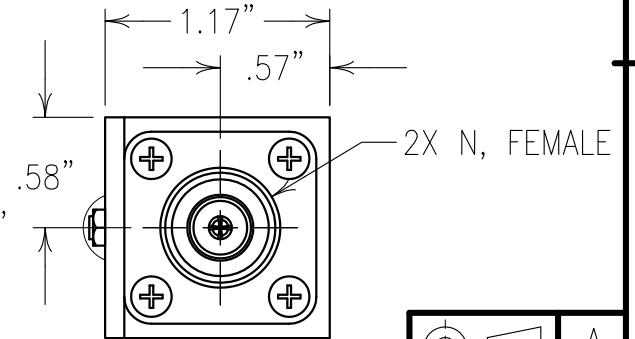
1



INPUT/OUTPUT

### ELECTRICAL CHARACTERISTICS

CENTER FREQUENCY: 1060 MHz  
 3 dB BANDWIDTH: 233 MHz NOM  
 PASSBAND: 960-1160 MHz  
 PASSBAND LOSS: 0.5 dB MAX  
 PASSBAND FLATNESS: 0.3 dB MAX  
 (INCLUDING FLATNESS)  
 PASSBAND VSWR: <1.3:1  
 REJECTION:  
 60 dBc MIN @ DC-760 MHz  
 40 dBc MIN @ 760-860 MHz  
 40 dBc MIN @ 1260-1360 MHz  
 60 dBc MIN @ 1360-4000 MHz  
 \*ULTIMATE: 70 dBc UP TO 6500 MHz  
 OPERATING TEMP.: -40 TO +85°C  
 POWER: 500 WATTS



### NOTES:

FILTER MAY BE ETCHED OR LABELED.  
 FILTER IS ROHS COMPLIANT.

ENGLISH / METRIC ENGLISH		CHECKED BY			
TOLERANCES UNLESS OTHERWISE SPECIFIED		DRAWN BY PBF			
MACHINED SURFACES TO BE 125/ OR BETTER REMOVE ALL BURRS		II	19DEC13	KJR	DEV. INI. ISS. PER 3737
ENGLISH (INCHES)		ENGINEER	REV	DATE	BY DCN No. REMARKS
METRIC (MM)		KJR			
.XX ±.02	.X ±.5	SCALE 1:1			
.XXX ±.010	.XX ±.25	APPLIC: CAVITY FILTER			
ANGLES ± 0° 30'		DATE	TITLE:	SHEET OF	
		26DEC13	7BCV5-1060/233-N	1 1	

Confidential and Proprietary information of ComNav Engineering Inc. Do Not Duplicate or Use Without Permission. ComNav Engineering Inc. claims Copyright in this document as of the Creation, last revision, and last updated dates. All Rights Reserved.



MATERIAL: ALUMINUM  
 FINISH: SILVER

DRAWING No.  
 OL1391