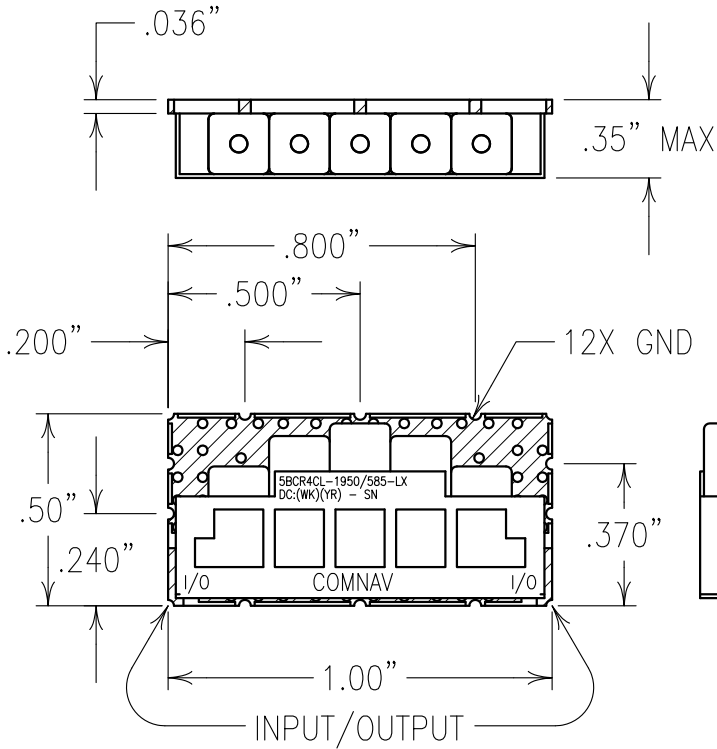
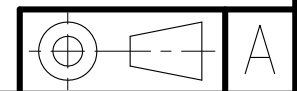
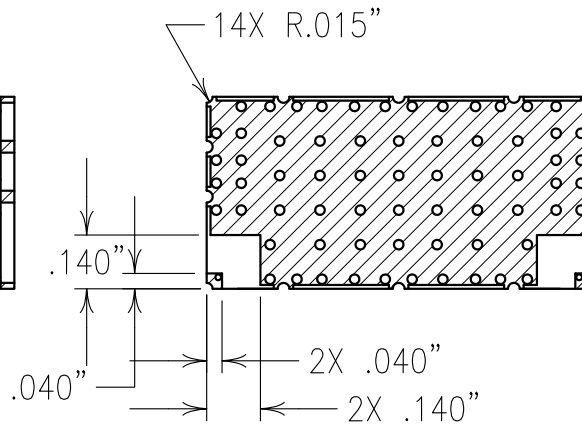


COPY



ENVIRONMENTAL SPECIFICATIONS*	
TEMPERATURE RANGE:	
OPERATING:	0° TO +60°C
NON-OPERATING:	-50° TO +70°C
VIBRATION:	5 G MIN
SHOCK:	15 G MIN
HUMIDITY, RELATIVE:	90% MIN. NON-CONDENSING
* DESIGN TO MEET	

ELECTRICAL CHARACTERISTICS	
CENTER FREQUENCY:	1950 MHz
PASSBAND:	1700-2200 MHz
PASSBAND VSWR:	1.4:1 MAX
PASSBAND BANDWIDTH:	1.0 dBc MAX
INSERTION LOSS:	3.0 dB MAX
REJECTION:	
30 dBc MIN @ DC TO 1210 MHz	
45 dBc MIN @ 2640 TO 6000 MHz	
IMPEDANCE:	50 OHMS
PASSBAND RIPPLE:	
0.15 dB MAX OVER ANY 20 MHz INTERVAL	
0.30 dB MAX OVER ANY 40 MHz INTERVAL	
0.60 dB MAX OVER ANY 80 MHz INTERVAL	
0.80 dB MAX OVER ANY 160 MHz INTERVAL	
INPUT POWER:	1 WATT AVE. MIN.
MAX TO 10K FT:	PEAK 2 WATT MIN.



NOTES: RECOMMENDED ATTACHMENT METHOD: SILVER EPOXY OR REFLOW NOT TO EXCEED AS INDICATED BELOW:

TEMP.(°C)	MAX.TIME(SEC)
215	90
230	60
245	30
260	15

TUNERS USE TEST FIXTURE TF0080.

ENGLISH / METRIC ENGLISH		CHECKED BY					
TOLERANCES UNLESS OTHERWISE SPECIFIED MACHINED SURFACES TO BE 125 OR BETTER REMOVE ALL BURRS		DRAWN BY	A	18JUN13	KJR	DEV.	GEN. REV. PER 3671
		ENGINEER	II	18MAR13	KJR	DEV.	INI. ISS. PER 3643
		REV	DATE	BY	DCN No.	REMARKS	
ENGLISH (INCHES)	METRIC (MM)	SCALE	APPLIC: CERAMIC COAXIAL FILTER				
.XX ±.02 .XXX ±.01	.X ±.25 .XX ±.13	2:1	TITLE: 5BCR4CL-1950/585-LX				
ANGLES ± 0° 30'		DATE	DRAWING No. 0L1332				
		02JUL13	FINISH: BOARD: NI/AU JACKET: NI/SILVER RESONATOR: SILVER		SHEET/OF 1/1		

Confidential and Proprietary information of ComNav Engineering Inc. Do Not Duplicate or Use Without Permission. ComNav Engineering Inc. claims Copyright in this document as of the Creation, last revision, and last updated dates. All Rights Reserved.

