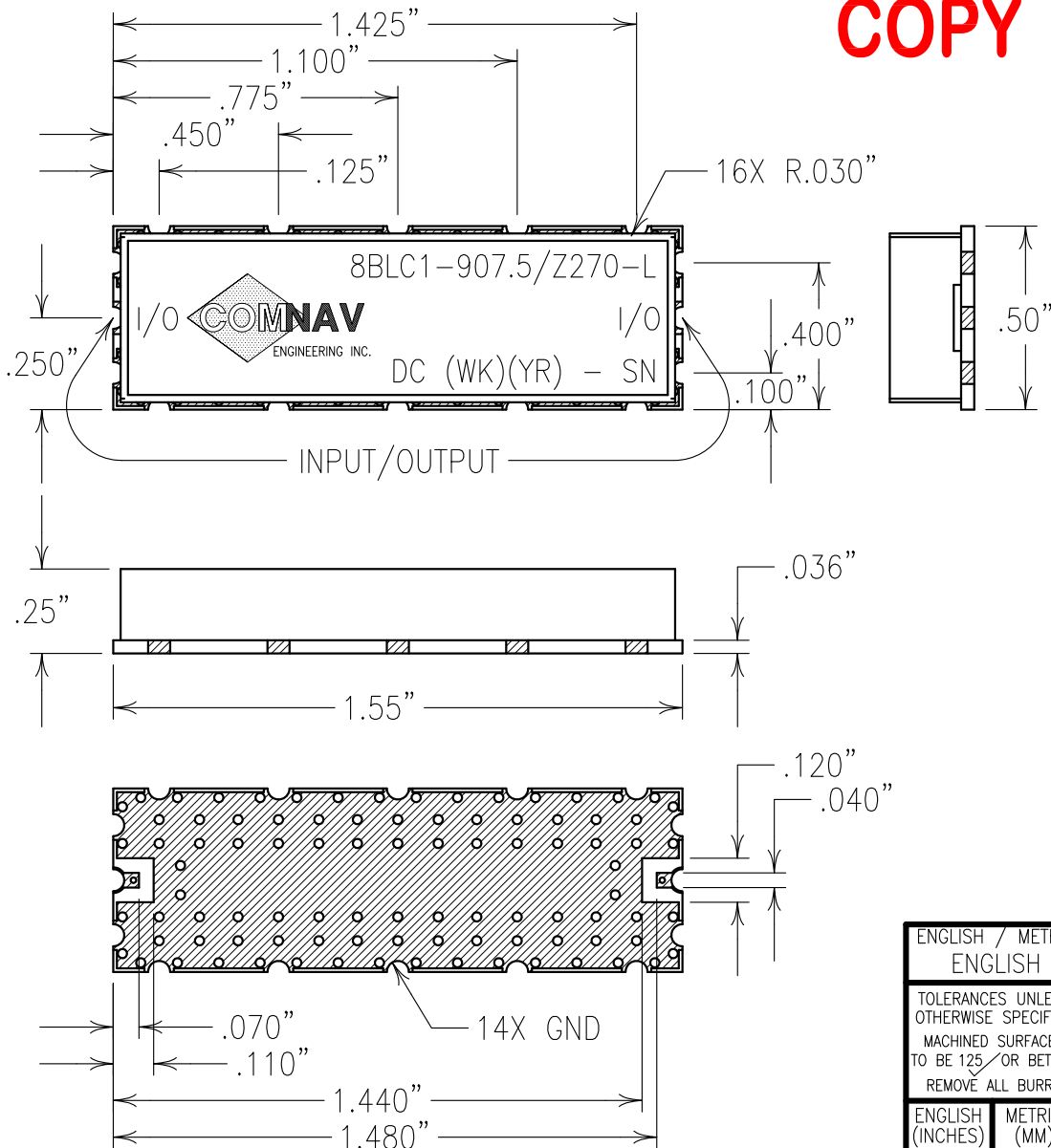


**COPY**



ELECTRICAL CHARACTERISTICS

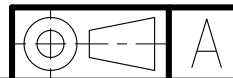
CENTER FREQUENCY: 907.5 MHz  
 INSERTION LOSS: 1.5 dB MAX @ FO  
 1.0 dB BANDWIDTH: 195 MHz MIN (810-1005 MHz)  
 RETURN LOSS: 15 dB MIN/TYP  
 REJECTION:  
 27 dBc MIN @ <740 MHz  
 27 dBc MIN @ >1110 MHz  
 IMPEDANCE: 50 OHM NOM  
 TEMP. RANGE: -40 TO +85°C

NOTES:

NO TIN PLATING UNDER SOLDER MASK.  
 RECOMMENDED ATTACHMENT METHOD:  
 SILVER EPOXY OR REFLOW NOT TO EXCEED  
 AS INDICATED BELOW:

TEMP.(°C)	MAX.TIME(SEC)
215	90
230	60
245	30
260	15

FILTER IS ROHS COMPLIANT.



Confidential and Proprietary information of ComNav Engineering Inc. Do Not Duplicate or Use Without Permission. ComNav Engineering Inc. claims Copyright in this document as of the Creation, last revision, and last updated dates. All Rights Reserved.

ENGLISH / METRIC ENGLISH	CHECKED BY				
TOLERANCES UNLESS OTHERWISE SPECIFIED	DRAWN BY				
MACHINED SURFACES TO BE 125 OR BETTER REMOVE ALL BURRS	ENGINEER	II	14SEP11	KJR	DEV. INT. ISS. PER 3437
ENGLISH (INCHES)	SCALE	REV	DATE	BY	DCN No. REMARKS
.XX ±.02 .XXX ±.010	METRIC (MM)	APPLIC: LC FILTER			
ANGLES ± 0° 30'	DATE	TITLE: 8BLC1-907.5/Z270-L			
	11NOV11	DRAWING No. OL1237			
COMNAV ENGINEERING INC.	FINISH: BOARD: NI/AU PLATED COPPER JACKET: NI/SILVER RESONATOR: SILVER	SHEET OF 1 1			