

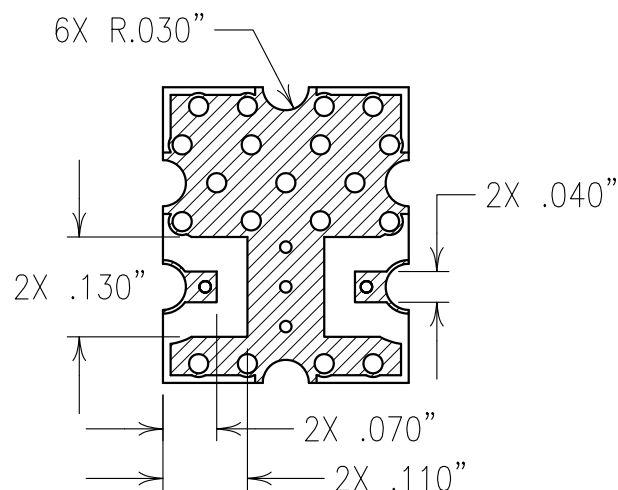
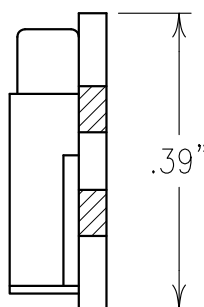
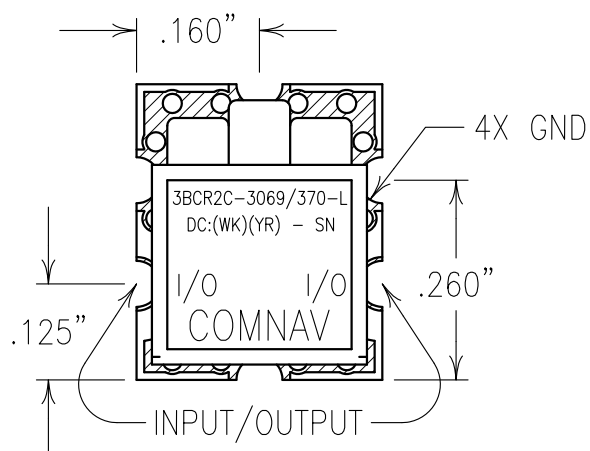
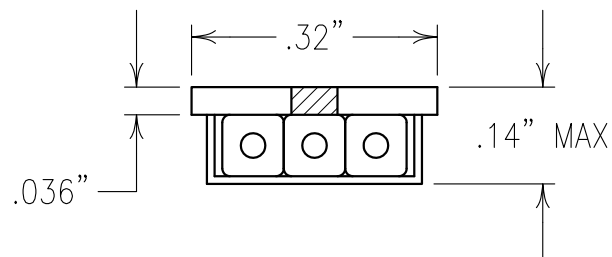
2

1

COPY

## ELECTRICAL CHARACTERISTICS

CENTER FREQUENCY: 3069 MHz  
 INSERTION LOSS: 1.0 dB MAX @ F<sub>0</sub>  
 BANDWIDTH 0.5 dBc: 288 MHz MIN  
 VSWR: 2.0:1 TYP  
 REJECTION:  
 30 dBc MIN @ 1765-2055 MHz



## NOTES:

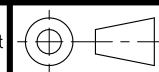
RECOMMENDED ATTACHMENT METHOD: SILVER EPOXY  
 OR REFLOW NOT TO EXCEED AS INDICATED BELOW:

TEMP.(°C) MAX.TIME(SEC)


215	90
230	60
245	30
260	15

FILTER IS ROHS COMPLIANT.  
 FILTER MAY BE ETCHED OR LABELED.

Confidential and Proprietary information of ComNav Engineering Inc. Do Not Duplicate or Use Without Permission. ComNav Engineering Inc. claims Copyright in this document as of the Creation, last revision, and last updated dates. All Rights Reserved.



A

ENGLISH / METRIC ENGLISH		CHECKED BY					
TOLERANCES UNLESS OTHERWISE SPECIFIED  MACHINED SURFACES TO BE 125 / OR BETTER  REMOVE ALL BURRS		DRAWN BY PBF					
		ENGINEER KJR		II	15SEP11	KJR	DEV.
		REV	DATE	BY	DCN No.	REMARKS	
ENGLISH (INCHES)	METRIC (MM)	SCALE 4:1		APPLIC: CERAMIC COAXIAL FILTER			
.XX ±.01 .XXX ±.005	.X ±.2 .XX ±.13	DATE 03NOV11		TITLE: 3BCR2C-3069/370-L			
ANGLES ± 0° 30'							
 <b>COMNAV</b> ENGINEERING INC		FINISH: BOARD: NICKEL/GOLD JACKET: NICKEL/SILVER RESONATOR: SILVER			DRAWING No.		SHEET OF
					OL1229		1 1

A