

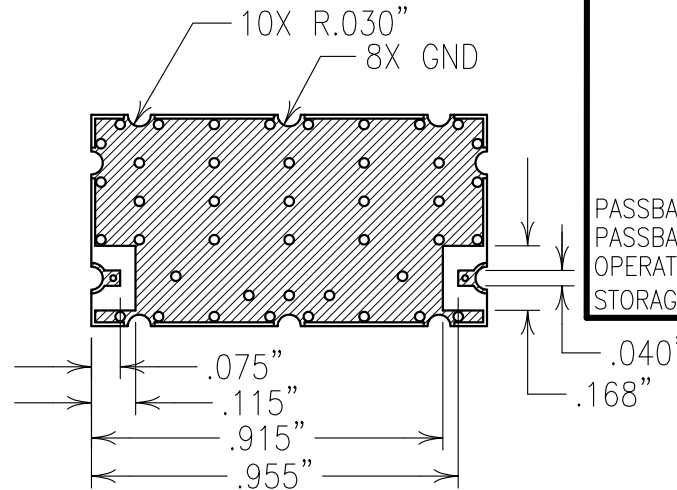
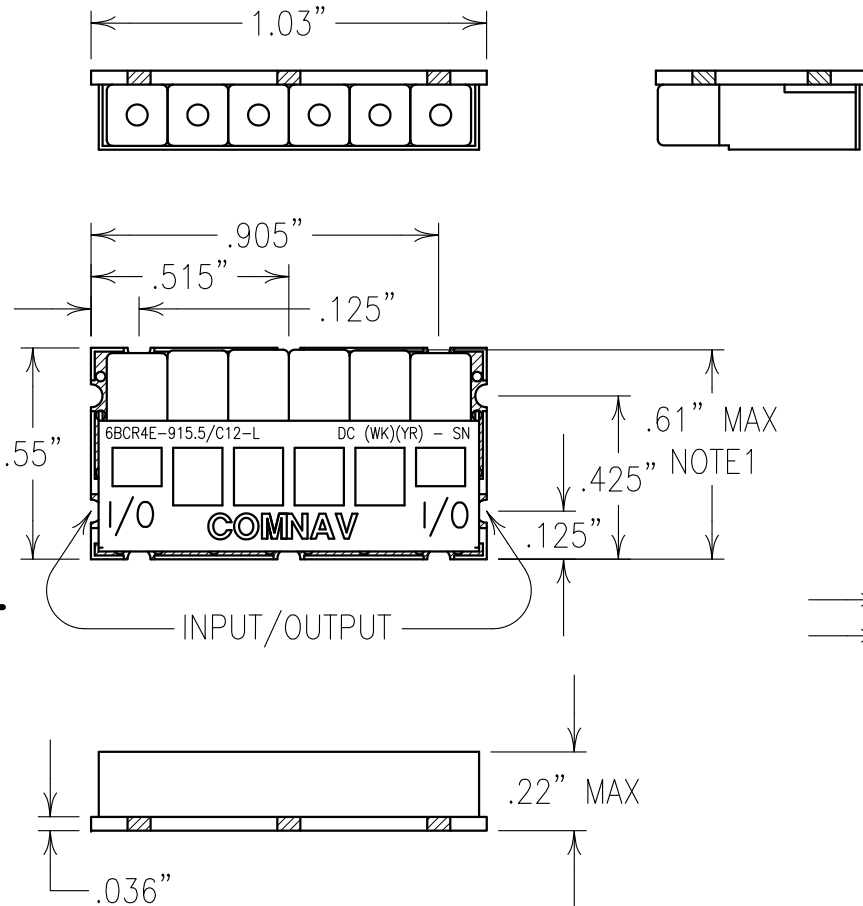
2

1

ELECTRICAL CHARACTERISTICS

CENTER FREQUENCY:	915.5 MHz
0.8 dB PASSBAND:	912.25-918.75 MHz
PASSBAND LOSS:	9.9 dB MAX
VSWR:	1.5:1 TYP
MAX INPUT POWER:	25 dBm
REJECTION:	
60 dBc MIN @	10 TO 30 MHz
60 dBc MIN @	806 MHz
60 dBc MIN @	849 MHz
40 dBc MIN @	894 MHz
40 dBc MIN @	896 MHz
40 dBc MIN @	901 MHz
40 dBc MIN @	902 MHz
35 dBc MIN @	903 MHz
35 dBc MIN @	928 MHz
40 dBc MIN @	929 MHz
40 dBc MIN @	930 MHz
60 dBc MIN @	1900 MHz
PASSBAND GROUP DELAY:	200 NSEC MAX
PASSBAND DELAY VARIATION:	25 NSEC MAX
OPERATING TEMPERATURE:	-40° TO +85°C
STORAGE TEMPERATURE:	-45° TO +93°C

COPY



NOTES:

1) RESONATORS MAY OVERHANG BOARD BY 0.06".
 RECOMMENDED FOOTPRINT: FP0123.
 NO TIN PLATING UNDER SOLDER MASK.
 RECOMMENDED ATTACHMENT METHOD: SILVER EPOXY
 OR REFLOW NOT TO EXCEED AS INDICATED BELOW:

TEMP.(°C)	MAX.TIME(SEC)
215	90
230	60
245	30
260	15

FILTER IS ROHS COMPLIANT.
 FILTER MAY BE ETCHED OR LABELED.

Confidential and Proprietary information of ComNav Engineering Inc. Do Not Duplicate or Use Without Permission. ComNav Engineering Inc. claims Copyright in this document as of the Creation, last revision, and last updated dates. All Rights Reserved.								A	
ENGLISH / METRIC CHECKED BY									
ENGLISH									
TOLERANCES UNLESS OTHERWISE SPECIFIED		DRAWN BY							
MACHINED SURFACES TO BE 125 / OR BETTER REMOVE ALL BURRS		PBF							
		ENGINEER		II 29JUL11		KJR DEV.		INI. ISS. PER 3419	
		KJR		REV		DATE		REMARKS	
ENGLISH (INCHES)		METRIC (MM)		SCALE		APPLIC: CERAMIC COAXIAL FILTER			
.XX ±.02		.X ±.25		2:1					
.XXX ±.010		.XX ±.13		DATE		TITLE: 6BCR4E-915.5/C12-L			
ANGLES ± 0° 30'				02AUG11					
		FINISH: BOARD: NI/AU PLATED COPPER		DRAWING No.		SHEET OF 1 1			
		JACKET: NI/SILVER		OL1207					
		RESONATOR: SILVER							