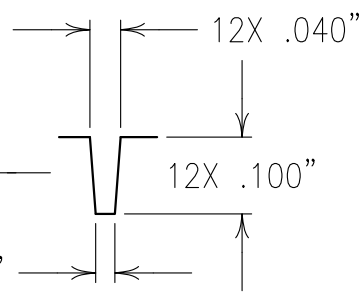
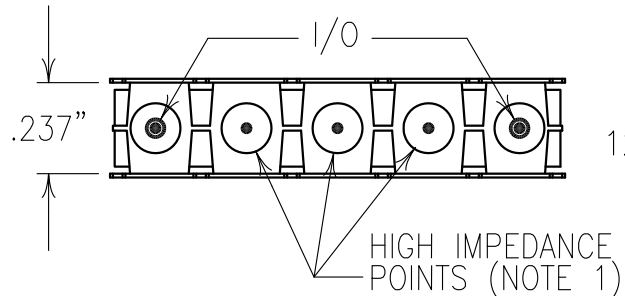
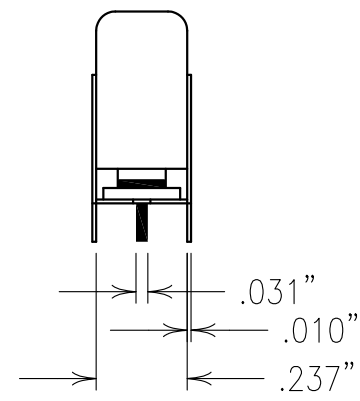
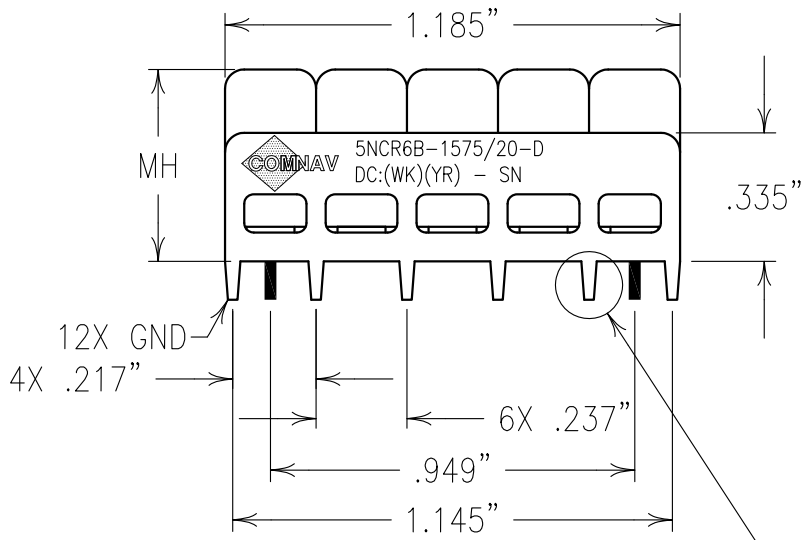


2

1

ELECTRICAL CHARACTERISTICS

CENTER FREQUENCY	1575.4 MHz
3dB BANDWIDTH	20 MHz NOM
PASSBANDS	DC-1564, 1584-2700 MHz
50 dB ATTEN.	@ F0 ± 0.5 MHz
60 dB ATTEN.	@ 1575.4 MHz
VSWR	2:1 TYP



COPY

NOTES:

NOTE1-THERE MUST BE A MINIMUM OF .050 AIR BETWEEN GROUND AND HIGH IMPEDANCE POINTS. THIS MAY BE DONE BY RAISING THE FILTER OR BY DRILLING OUT THE BOARD.
 MAX REFLOW TEMP. 240°C FOR 30 SEC., OR 260°C FOR 15 SEC.
 HAND OR WAVE SOLDERING RECOMMENDED.
 FOR RECOMMENDED FOOTPRINT SEE FP0056.

Confidential and Proprietary information of ComNav Engineering Inc. Do Not Duplicate or Use Without Permission. ComNav Engineering Inc. claims Copyright in this document as of the Creation, last revision, and last updated dates. All Rights Reserved.

ENGLISH / METRIC ENGLISH	CHECKED BY						
TOLERANCES UNLESS OTHERWISE SPECIFIED	DRAWN BY EEF						
MACHINED SURFACES TO BE 125 / OR BETTER REMOVE ALL BURRS	ENGINEER KJR	II	16NOV10	KJR	DEV.	INI. ISS. PER 3285	
ENGLISH (INCHES) .XX ±.02 .XXX ±.010	METRIC (MM) .X ±.25 .XX ±.13	SCALE 2:1	APPLIC: CERAMIC COAXIAL FILTER				
ANGLES ± 0° 30'	DATE 16NOV10	TITLE: 5NCR6B-1575/20-D					
	FINISH: JACKET: NI/SILVER RESONATOR: SILVER PINS: TIN PLATED BRASS					DRAWING No.	SHEET OF 1 1
						0L1156	