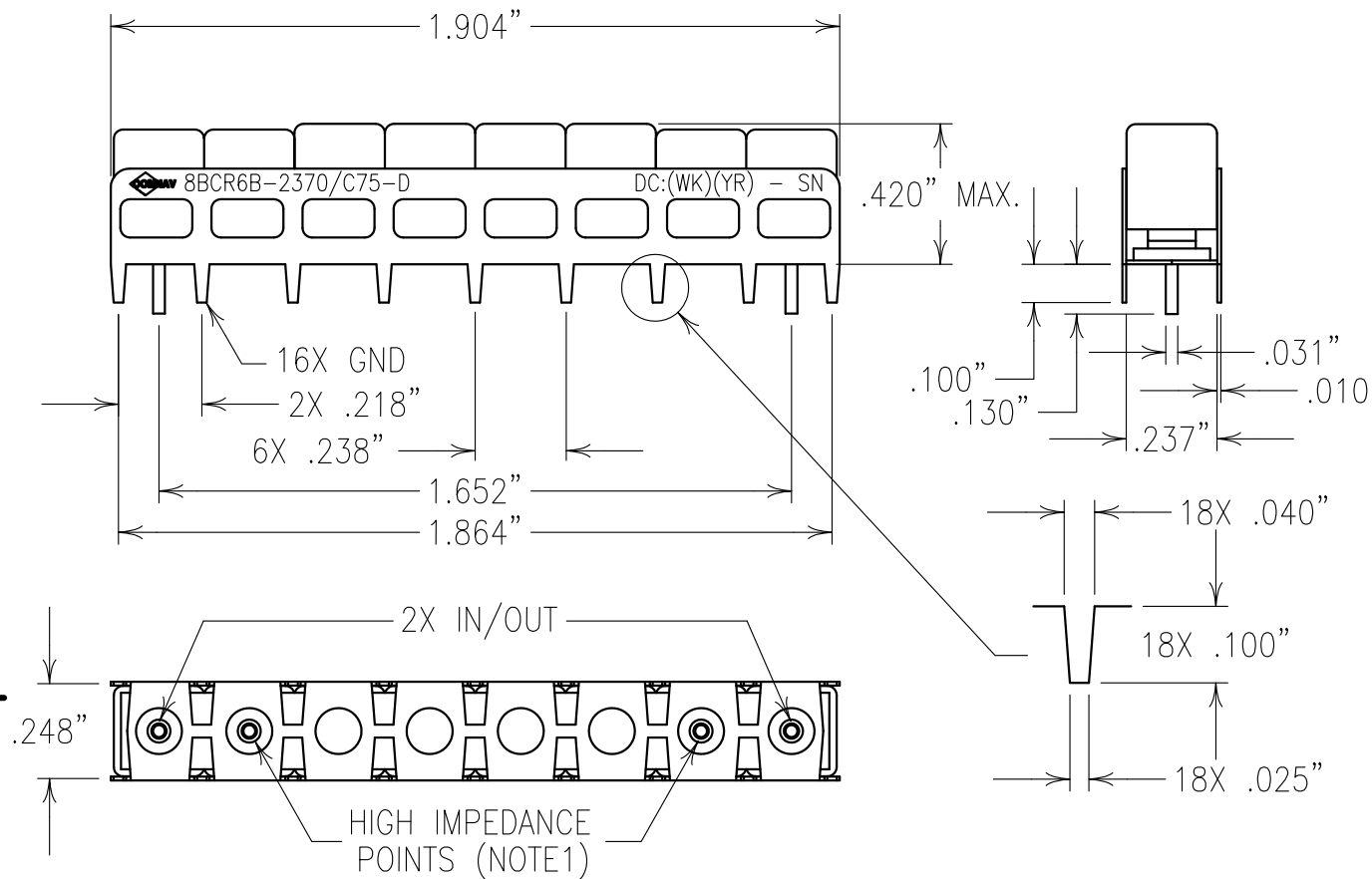


2

1



ELECTRICAL CHARACTERISTICS

CENTER FREQUENCY: 2370 MHz nom.
 PASSBAND: 2370 MHz \pm 20 MHz
 PB INSERTION LOSS: 6.0 dB MAX.
 PB FLATNESS: \pm 0.25 dB MAX.
 PB GROUP DELAY VARIATION:
 1.4 nSEC VARIATION MAX.
 6.0 nSEC PARABOLIC MAX.
 0.7 nSEC RIPPLE P-P MAX.

PB VSWR: 14 dB MIN. IN/OUT
 REJECTION:

80 dBc MIN. @ 2490-2530 MHz
 75 dBc MIN. @ 2440 MHz
 45 dBc MIN. @ 2300 MHz

COPY

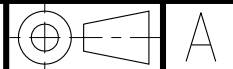
NOTES:

- 1) THERE MUST BE A MINIMUM OF .050 AIR SPACE BETWEEN GROUND AND HIGH IMPEDANCE POINTS.

THIS MAY BE ACCOMPLISHED BY RAISING THE FILTER OR DRILLING OUT THE BOARD.

FILTER IS ROHS COMPLIANT.
 FILTER MAY BE LABELED OR ETCHED.

Confidential and Proprietary information of ComNav Engineering Inc. Do Not Duplicate or Use Without Permission. ComNav Engineering Inc. claims Copyright in this document as of the Creation, last revision, and last updated dates. All Rights Reserved.



ENGLISH / METRIC ENGLISH		CHECKED BY									
TOLERANCES UNLESS OTHERWISE SPECIFIED		DRAWN BY		EEF							
MACHINED SURFACES TO BE 125 / OR BETTER REMOVE ALL BURRS		ENGINEER		KJR		REV		DATE		BY	
ENGLISH (INCHES)		METRIC (MM)		SCALE		2:1		APPLIC:		CERAMIC COAXIAL FILTER	
.XX \pm .02 .XXX \pm .010		.X \pm .5 .XX \pm .25		DATE		29OCT10		TITLE:		8BCR6B-2370/C75-D	
ANGLES \pm 0° 30'		FINISH:		JACKET: NICKEL/SILVER RESONATOR: SILVER		DRAWING No.		11151		SHEET OF 1 1	