

2

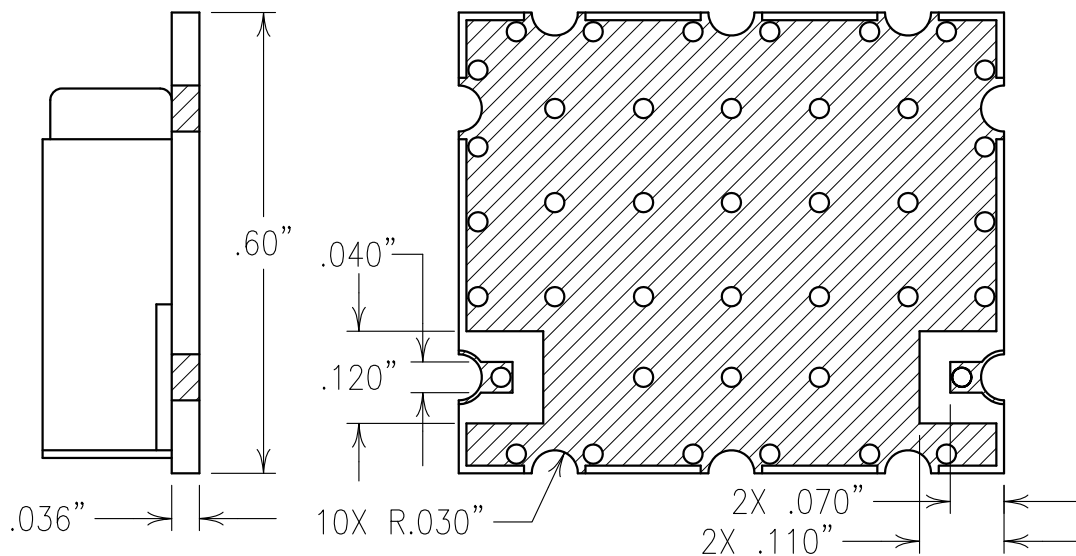
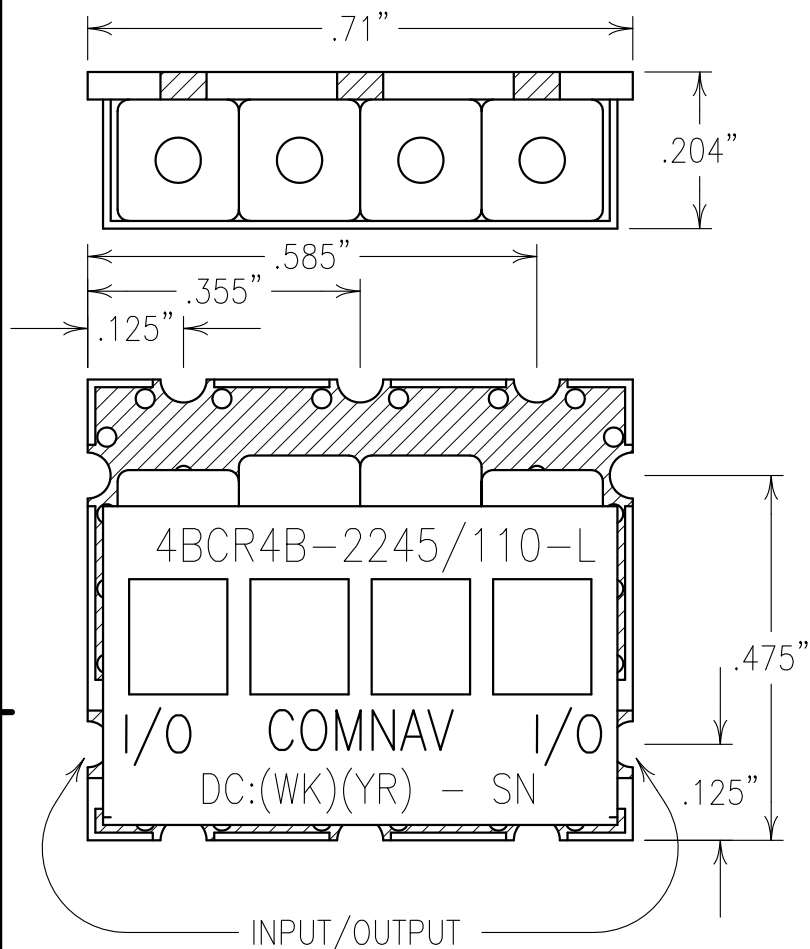
1

COPY

ELECTRICAL CHARACTERISTICS

PASSBAND: 2200–2290 MHz
 PB INSERTION LOSS: 2.0 dB MAX
 PASSBAND VSWR: 1.5:1 MAX.
 REJECTION: 30 dB MIN @ 2110 MHz
 OPERATING TEMP: –40°C TO +85°C
 STORAGE TEMP: –40°C TO +85°C

B



NOTES:

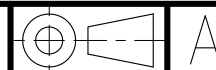
RECOMMENDED FOOTPRINT: FP0111.

RECOMMENDED ATTACHMENT METHOD: SILVER EPOXY
 OR REFLOW NOT TO EXCEED AS INDICATED BELOW:
 TEMP.(°C) MAX. TIME(SEC)

215	90
230	60
245	30
260	15

FILTER MAY BE LABELED OR ETCHED.
 FILTER IS ROHS COMPLIANT.

Confidential and Proprietary information of ComNav Engineering Inc. Do Not Duplicate or Use Without Permission. ComNav Engineering Inc. claims Copyright in this document as of the Creation, last revision, and last updated dates. All Rights Reserved.



A

ENGLISH / METRIC ENGLISH		CHECKED BY						
TOLERANCES UNLESS OTHERWISE SPECIFIED MACHINED SURFACES TO BE 125 / OR BETTER REMOVE ALL BURRS		DRAWN BY EEF						
		ENGINEER KJR		II	17AUG10	KJR	DEV.	INI. ISS. PER 3249
		REV	DATE	BY	DCN No.	REMARKS		
ENGLISH (INCHES)		METRIC (MM)		SCALE 4:1		APPLIC: CERAMIC COAXIAL FILTER		
.XX ±.02 .XXX ±.010		.X ±.25 .XX ±.13		DATE 17AUG10		TITLE: 4BCR4B-2245/110-L		
ANGLES ± 0° 30'								
 COMNAV ENGINEERING INC		FINISH: BOARD: NI/GOLD JACKET: NI/SILVER RESONATOR: SILVER				DRAWING No. OL1133		SHEET OF 1 1

A