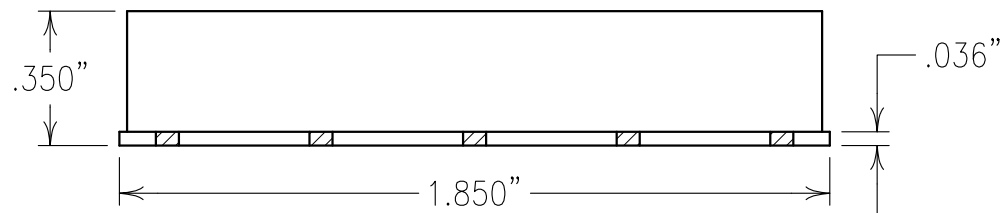
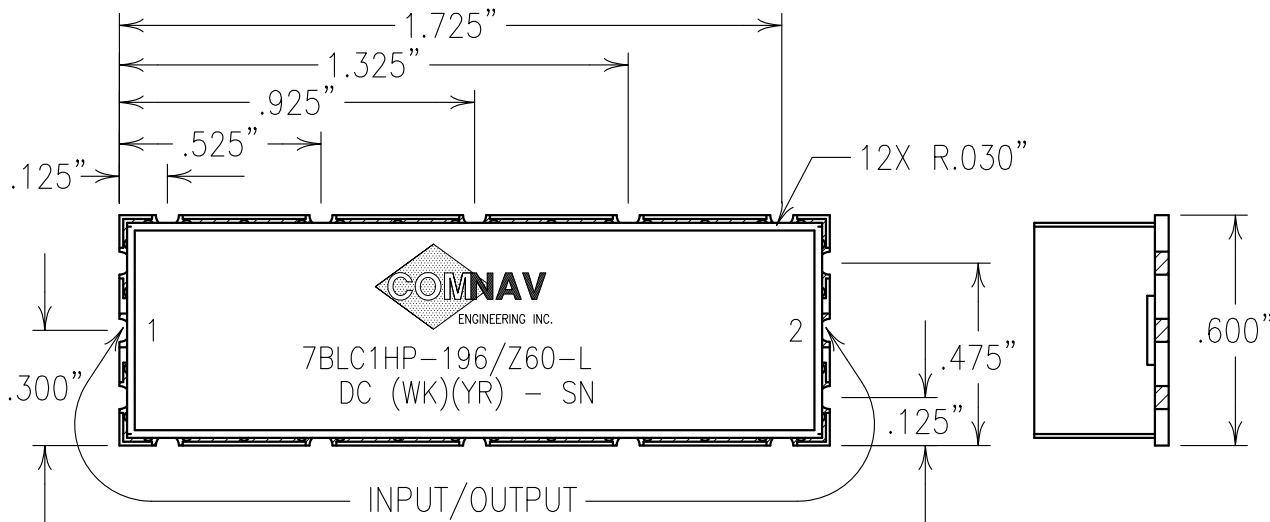
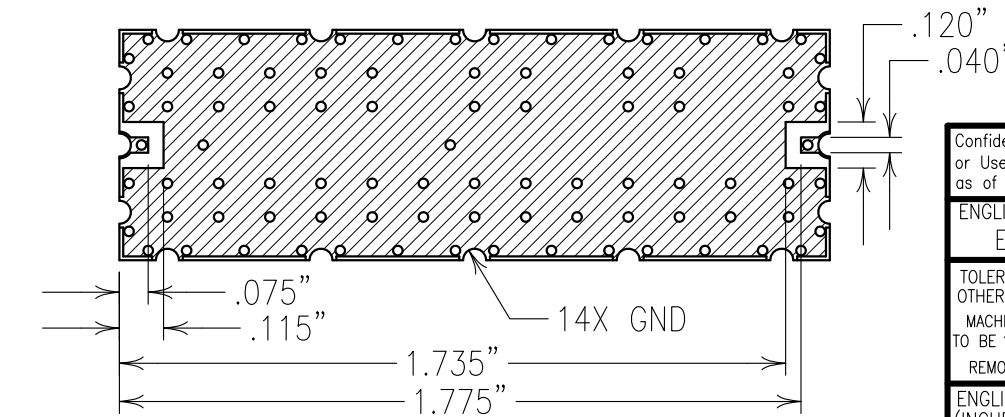


2

1



**COPY**



### ELECTRICAL CHARACTERISTICS

CENTER FREQUENCY:	195 MHz
PASSBAND:	174-216 MHz
PASSBAND INSERTION LOSS:	1.2 dB MAX
PASSBAND FLATNESS:	0.4 dB MAX/ 0.3 dB GOAL
PASSBAND RETURN LOSS:	14 dB MIN
ATTENUATION:	
DC-108 MHz:	50 dBc MIN
118-137 MHz:	50 dBc MIN
250 MHz:	50 dBc MIN
348-432 MHz:	60 dBc MIN
500-3100 MHz:	70 dBc MIN
OPERATING TEMP.:	-40 TO +85°C
MAX. POWER HANDLING:	40 WATTS IN PASSBAND INTO 10:1 MISMATCH

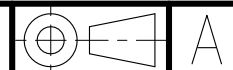
### NOTES:

NO TIN PLATING UNDER SOLDER MASK.  
RECOMMENDED ATTACHMENT METHOD:  
SILVER EPOXY OR REFLOW NOT TO  
EXCEED AS INDICATED BELOW:

TEMP.(°C)	MAX.TIME(SEC)
215	90
230	60
245	30
260	15

FILTER IS ROHS COMPLIANT.

Confidential and Proprietary information of ComNav Engineering Inc. Do Not Duplicate or Use Without Permission. ComNav Engineering Inc. claims Copyright in this document as of the Creation, last revision, and last updated dates. All Rights Reserved.



ENGLISH / METRIC ENGLISH	CHECKED BY					
TOLERANCES UNLESS OTHERWISE SPECIFIED	DRAWN BY	A	29SEP10	MJG	DEV.	GEN. REV. PER 3262
MACHINED SURFACES TO BE 125 / OR BETTER	ENGINEER	II	04AUG10	MJG	DEV.	INI. ISS. PER 3239
REMOVE ALL BURRS	MJG	REV	DATE	BY	DCN No.	REMARKS

ENGLISH (INCHES)	METRIC (MM)	SCALE	APPLIC:
.XX ±.02	.X ±.25	2:1	LC FILTER
.XXX ±.010	.XX ±.13	DATE	TITLE:
ANGLES ± 0° 30'		29SEP10	7BLC1HP-196/Z60-L

COMNAV ENGINEERING INC.	FINISH: BOARD: NI/AU PLATED COPPER	DRAWING No.	SHEET OF 1 1
	JACKET: NI/SILVER RESONATOR: SILVER	OL1126	