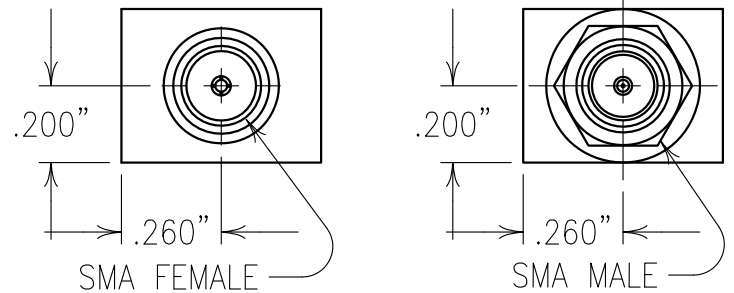
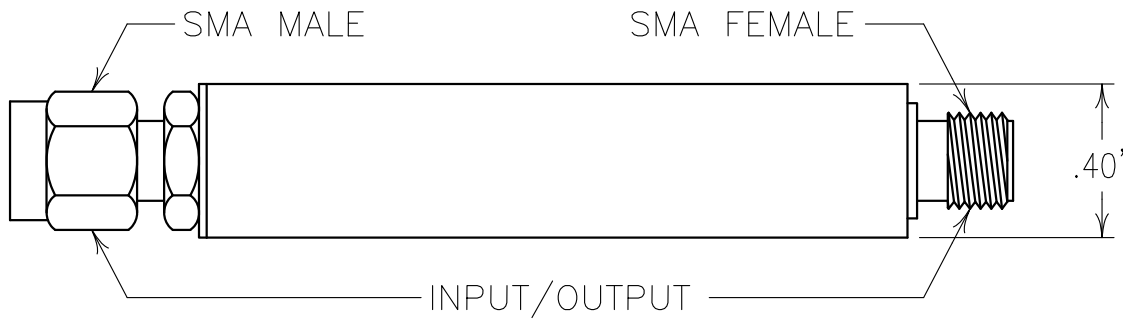
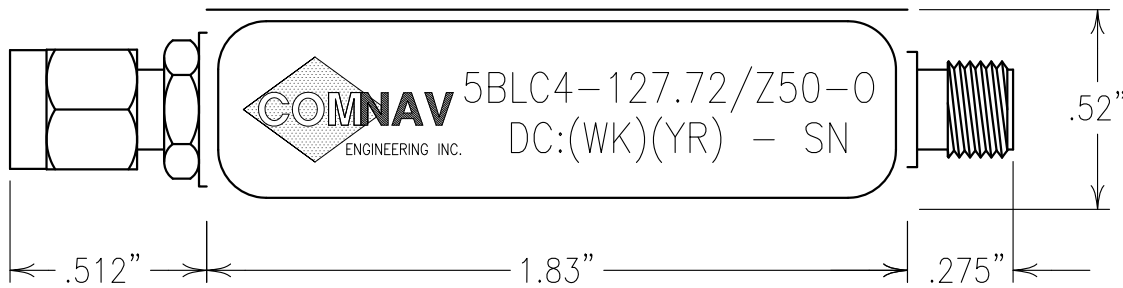
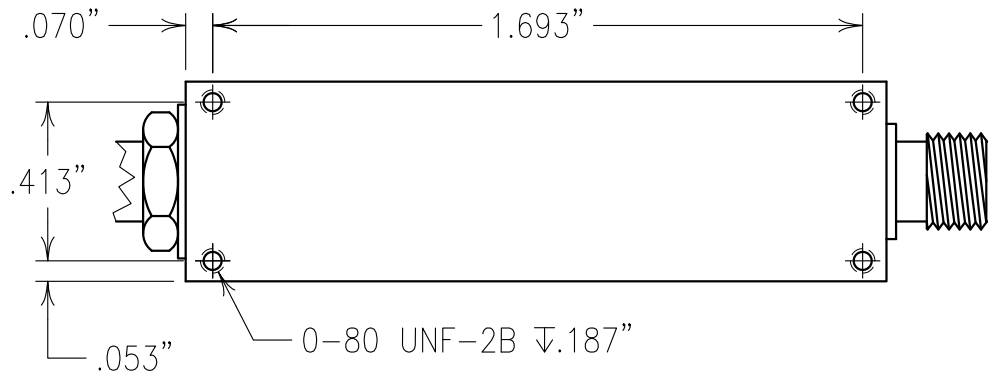


COPY

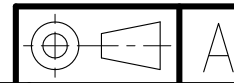


ELECTRICAL CHARACTERISTICS

CENTER FREQUENCY: 127.72 MHz
 10.0 dB BANDWIDTH: 50.0 MHz MIN
 INSERTION LOSS: 1.5 dB MAX @ FO
 VSWR: 1.5:1 MAX @ 108-146 MHz
 STOPBAND REJECTION:
 60 dBc MIN @ 79 MHz
 60 dBc MIN @ 214 MHz
 INPUT POWER: AVERAGE 2 WATT MAX/
 PEAK 20 WATT MAX
 OPERATING TEMP.: -40 TO + 85°C
 IMPEDANCE: 50 OHMS IN/OUT
 GROUP DELAY VARIATION:
 2.3 nSEC MAX @ 122-132 MHz
 50 nSEC MAX @ 102-152 MHz



NOTES:
 FILTER IS ROHS COMPLIANT.



ENGLISH / METRIC ENGLISH	CHECKED BY				
TOLERANCES UNLESS OTHERWISE SPECIFIED	DRAWN BY PBF				
MACHINED SURFACES TO BE 125 OR BETTER REMOVE ALL BURRS	ENGINEER KJR	II	16JUN10	KJR	DEV. INI. ISS. PER 3221
	REV	DATE	BY	DCN No.	REMARKS

ENGLISH (INCHES) .XX ±.02 .XXX ±.01	METRIC (MM) .X ±.4 .XX ±.25	SCALE 2:1	APPLIC: LC FILTER	TITLE: 5BLC4-127.72/Z50-0	SHEET OF 1 1
ANGLES ± 0° 30'		DATE 28JUN10	DRAWING No. 0L1089		

MATERIAL: LID: NICKEL/SILVER BASE: ALUMINUM 6061-T6	FINISH: LID: NONE BASE: SILVER MATTE OVER COPPER WITH TARNA-BAN MILSPEC QQS-365
--	---

Confidential and Proprietary information of ComNav Engineering Inc. Do Not Duplicate or Use Without Permission. ComNav Engineering Inc. claims Copyright in this document as of the Creation, last revision, and last updated dates. All Rights Reserved.