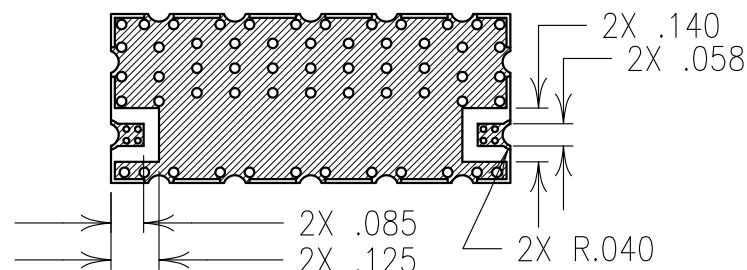
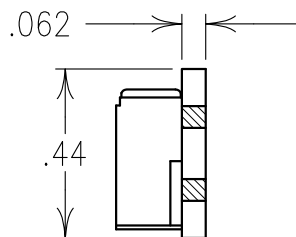
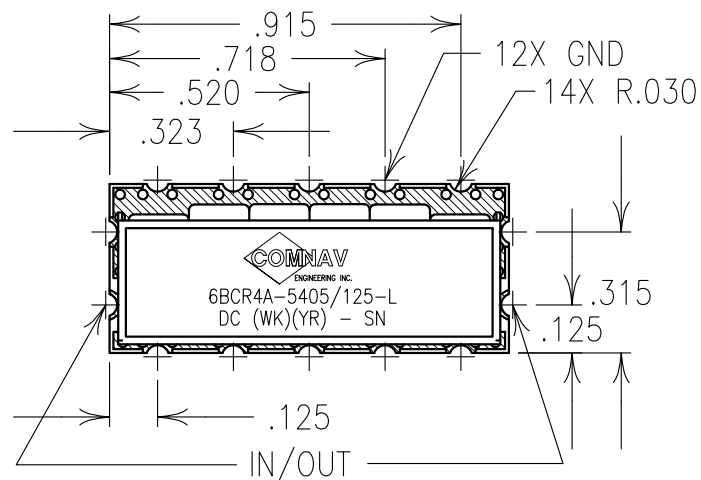


COPY

ELECTRICAL CHARACTERISTICS

CENTER FREQUENCY: 5405 MHz
 PASSBAND: $F_0 \pm 50$ MHz
 PASSBAND FLATNESS: 1.5 dB MAX.
 PASSBAND LOSS: 4.5 dB MAX.
 PHASE LINEARITY: ± 5.0 DEGS MAX.
 VSWR: 1.7:1 MAX. TYP.
 REJECTION:
 17 dBc MIN.: DC-5300 MHz
 17 dBc MIN.: 5510-10000 MHz
 POWER HANDLING: 1 WATT MAX.
 OPERATING TEMP: -10 TO +40 DEG C



NOTES:

FOR RECOMMENDED FOOTPRINT SEE FP0023.

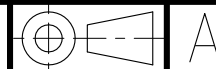
NO TIN PLATING UNDER SOLDER MASK.

RECOMMENDED ATTACHMENT METHOD: SILVER EPOXY
 OR REFLOW NOT TO EXCEED AS INDICATED BELOW:

TEMP.(°C) MAX.TIME(SEC)

215	90
230	60
245	30
260	15

Confidential and Proprietary information of ComNav Engineering Inc. Do Not Duplicate or Use Without Permission. ComNav Engineering Inc. claims Copyright in this document as of the Creation, last revision, and last updated dates. All Rights Reserved.



A

ENGLISH / METRIC ENGLISH	CHECKED BY						
TOLERANCES UNLESS OTHERWISE SPECIFIED	DRAWN BY EEF						
MACHINED SURFACES TO BE 125 / OR BETTER	ENGINEER KJR	II	05APR10	KJR	DEV.	INI. ISS. PER 3196	
REMOVE ALL BURRS	REV	DATE	BY	DCN No.	REMARKS		
ENGLISH (INCHES) .XX ±.02 .XXX ±.010	METRIC (MM) .X ±.25 .XX ±.13	SCALE 2:1	DATE 05APR10	APPLIC: CERAMIC BANDPASS FILTER	TITLE: 6BCR4A-5405/125-L		
ANGLES ± 0° 30'	FINISH: BOARD: NI/AU PLATED COPPER JACKET: NI/SILVER RESONATOR: SILVER	DRAWING No. OL1079	SHEET OF 1 1				

A