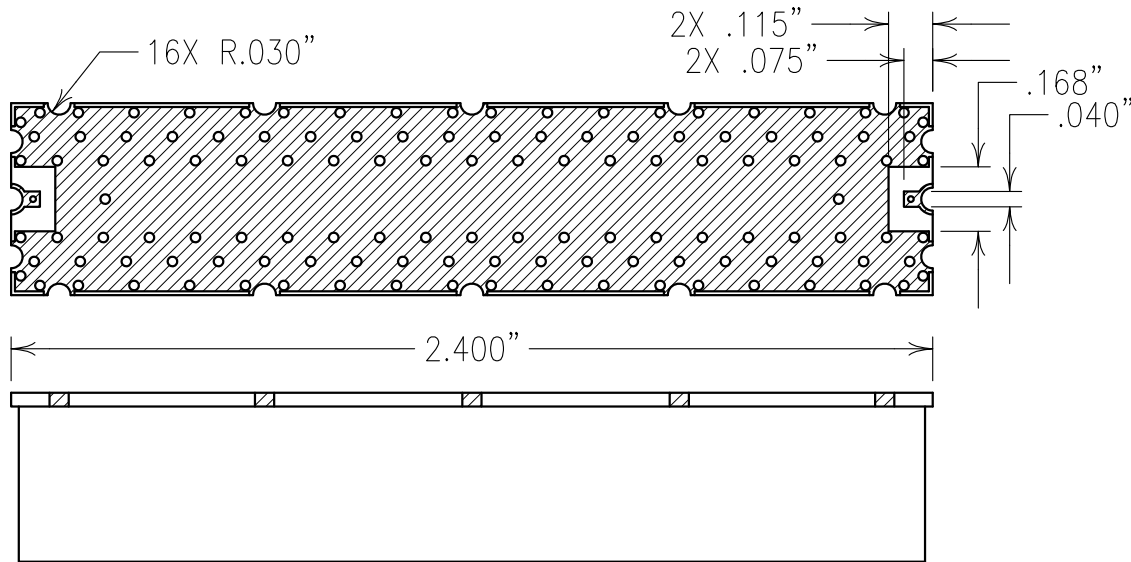


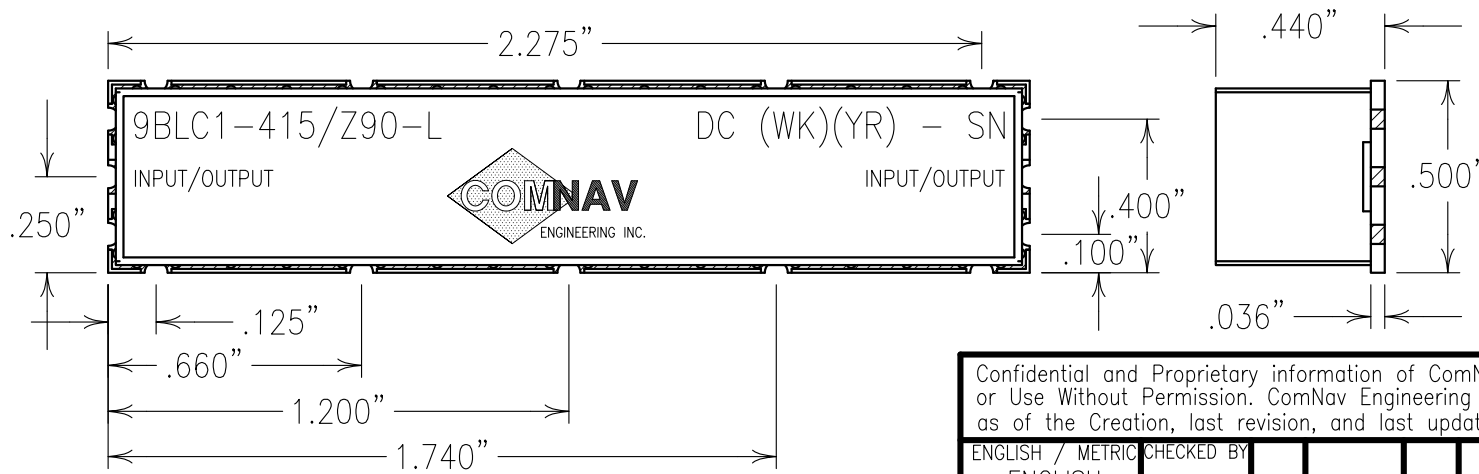
2

1

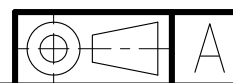


ELECTRICAL CHARACTERISTICS	
CENTER FREQUENCY: 415 MHz TYP.	
INSERTION LOSS:	
2.4 dB MAX @ 380-390 MHz	
1.8 dB MAX @ 390-450 MHz	
PASSBAND FLATNESS:	
1.0 dB MAX @ 380-450 MHz	
0.6 dB MAX @ 385-450 MHz	
RETURN LOSS:	
1.5:1 MAX @ 380-450 MHz	
ATTENUATION:	
DC-355 MHz:	50 dBc MIN.
520-3000 MHz:	50 dBc MIN.
OPERATING TEMP.: -40 TO +85°C	
RF INPUT POWER:	
AVERAGE POWER:	+39 dBm
MAXIMUM POWER:	+44 dBm

B



**COPY**



NOTES:

RECOMMENDED ATTACHMENT METHOD:  
SILVER EPOXY OR REFLOW NOT TO EXCEED AS INDICATED BELOW:

TEMP.(°C)	MAX.TIME(SEC)
215	90
230	60
245	30
260	15

FILTER IS ROHS COMPLIANT.  
FILTER MAY BE LABELED OR ETCHED.

Confidential and Proprietary information of ComNav Engineering Inc. Do Not Duplicate or Use Without Permission. ComNav Engineering Inc. claims Copyright in this document as of the Creation, last revision, and last updated dates. All Rights Reserved.

ENGLISH / METRIC	CHECKED BY				
ENGLISH					
TOLERANCES UNLESS OTHERWISE SPECIFIED	DRAWN BY	A	24FEB10	KJR	DEV.
MACHINED SURFACES TO BE 125/100 OR BETTER	PFB				GEN. REV. PER 3187
REMOVE ALL BURRS	ENGINEER	II	03FEB10	KJR	DEV.
	KJR	REV	DATE	BY	DCN No.
ENGLISH (INCHES)	METRIC (MM)	SCALE 2:1			
.XX ±.02	.X ±.50	APPLIC: CHIP AND WIRE FILTER			
.XXX ±.010	.XX ±.25	DATE 24FEB10			
ANGLES ± 0° 30'		TITLE: 9BLC1-415/Z90-L			

A

	FINISH: BOARD: NICKEL/GOLD JACKET: NICKEL/SILVER	DRAWING No. OL1072	SHEET OF 1 1
--	---	--------------------	--------------