

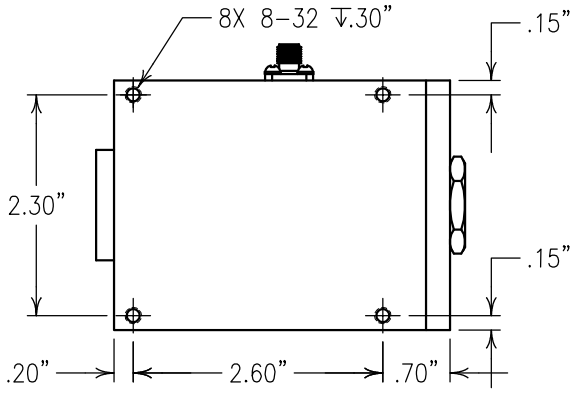
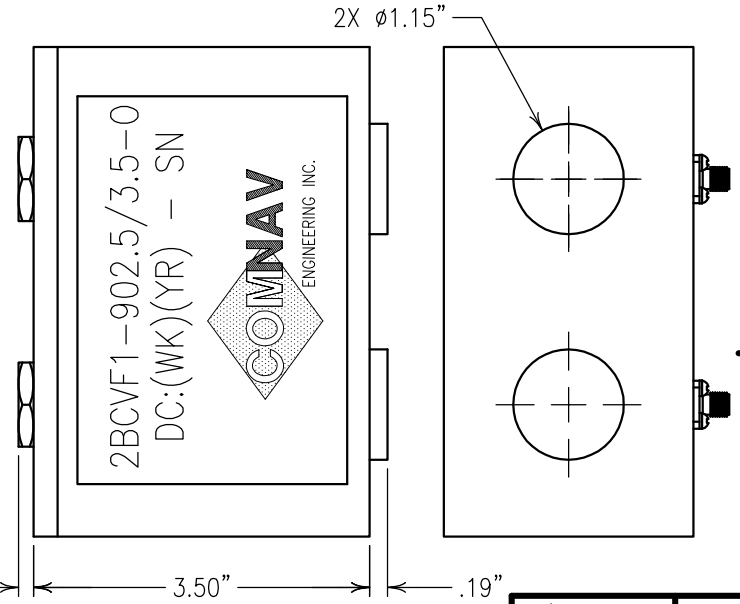
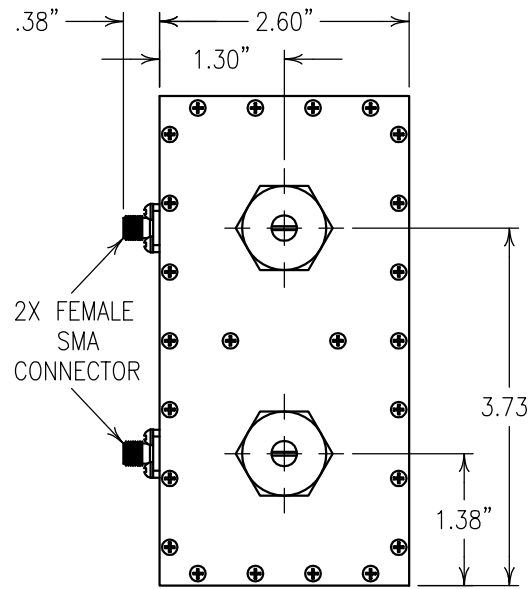
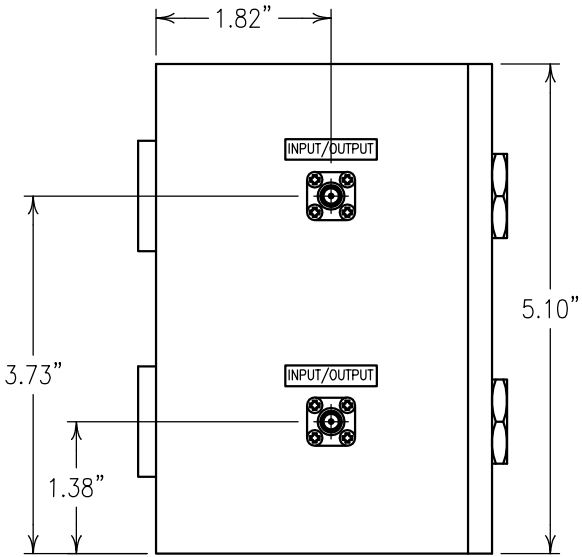
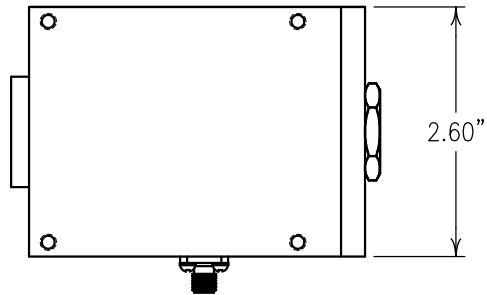
2

1

COPY

ELECTRICAL CHARACTERISTICS

CENTER FREQUENCY (F0):	902.5 MHz
INSERTION LOSS AT F0:	<1.0 dB MAX. / 0.9 dB goal
INSERTION LOSS AT F0±0.5 MHz:	<1.1 dB MAX. / 1.0 dB goal
REJECTION:	@ 900 MHz: 6 dBc
	@ 897 MHz: 18 dBc
INPUT/OUTPUT RETURN LOSS:	>15 dB



ENGLISH / METRIC	
ENGLISH	
TOLERANCES UNLESS OTHERWISE SPECIFIED	
MACHINED SURFACES TO BE 125 / OR BETTER	
REMOVE ALL BURRS	
ENGLISH (INCHES)	METRIC (MM)
.XX ±.02	.X ±.2
.XXX ±.01	.XX ±.13
ANGLES ± 0° 30'	

CHECKED BY					
DRAWN BY	EEF				
ENGINEER	KJR	REV	DATE	BY	DCN No.
		II	12JAN10	KJR	DEV. INI. ISS. PER 3176
SCALE	1:2	APPLIC: CAVITY FILTER			
DATE	13JAN10	TITLE:	2BCVF1-902.5/3.5-0		SHEET OF 1 1

Confidential and Proprietary information of ComNav Engineering Inc. Do Not Duplicate or Use Without Permission. ComNav Engineering Inc. claims Copyright in this document as of the Creation, last revision, and last updated dates. All Rights Reserved.



MATERIALS: ALUMINUM AND BRASS
FINISH: SILVER

DRAWING No. 0L1068