

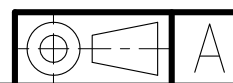
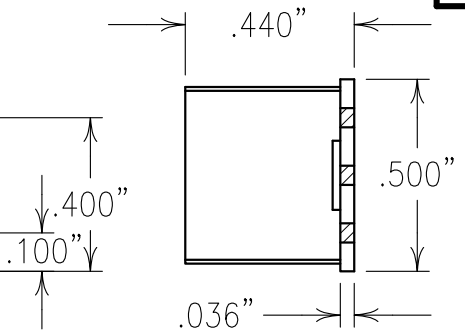
COPY

ELECTRICAL CHARACTERISTICS	
CENTER FREQUENCY: 330 MHz TYP.	
INSERTION LOSS:	
2.1 dB MAX @ 300-310 MHz	
1.3 dB MAX @ 310-350 MHz	
2.0 dB MAX @ 350-360 MHz	
PASSBAND FLATNESS:	
0.7 dB MAX @ 300-305 MHz	
0.4 dB MAX @ 305-355 MHz	
0.7 dB MAX @ 355-360 MHz	
RETURN LOSS:	
1.5:1 MAX @ 300-360 MHz	
ATTENUATION:	
DC-265 MHz:	50 dBc MIN.
395-3000 MHz:	50 dBc MIN.
OPERATING TEMP.: -40 TO +85°C	
RF INPUT POWER:	
AVERAGE POWER:	+39 dBm
MAXIMUM POWER:	+44 dBm

NOTES:
 RECOMMENDED ATTACHMENT METHOD:
 SILVER EPOXY OR REFLOW NOT TO EXCEED AS INDICATED BELOW:

TEMP.(°C)	MAX.TIME(SEC)
215	90
230	60
245	30
260	15

FILTER IS ROHS COMPLIANT.
 FILTER MAY BE LABELED OR ETCHED.



Confidential and Proprietary information of ComNav Engineering Inc. Do Not Duplicate or Use Without Permission. ComNav Engineering Inc. claims Copyright in this document as of the Creation, last revision, and last updated dates. All Rights Reserved.

ENGLISH / METRIC	CHECKED BY					
ENGLISH						
TOLERANCES UNLESS OTHERWISE SPECIFIED	DRAWN BY	A	24FEB10	KJR	DEV.	GEN. REV. PER 3187
MACHINED SURFACES TO BE 125/10R BETTER	PFB	II	16DEC09	KJR	DEV.	INI. ISS. PER 3168
REMOVE ALL BURRS	ENGINEER	KJR	REV	DATE	BY	DCN No.
						REMARKS

ENGLISH (INCHES)	METRIC (MM)	SCALE	APPLIC:
.XX ±.02	.X ±.50	2:1	CHIP AND WIRE FILTER
.XXX ±.010	.XX ±.25	DATE	TITLE:
ANGLES ± 0° 30'		24FEB10	7BLC1-330/Z70-L

	FINISH: BOARD: NICKEL/GOLD JACKET: NICKEL/SILVER	DRAWING No.	SHEET OF
		OL1063	1 1