

COPY

ELECTRICAL CHARACTERISTICS

CENTER FREQUENCY: 290 MHz TYP.

INSERTION LOSS:

2.1 dB MAX @ 260-263 MHz
1.2 dB MAX @ 263-317 MHz
2.3 dB MAX @ 317-320 MHz

PASSBAND FLATNESS:

0.7 dB MAX @ 260-263 MHz
0.4 dB MAX @ 263-317 MHz
0.7 dB MAX @ 317-320 MHz

RETURN LOSS:

1.5:1 MAX @ 260-320 MHz

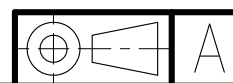
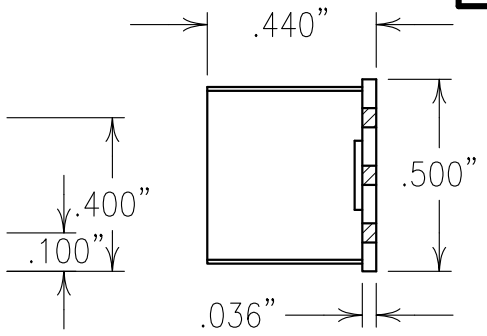
ATTENUATION:

DC-225 MHz: 50 dBc MIN.
355-3000 MHz: 50 dBc MIN.

OPERATING TEMP.: -40 TO +85°C

RF INPUT POWER:

AVERAGE POWER: +39 dBm
MAXIMUM POWER: +44 dBm



NOTES:

RECOMMENDED ATTACHMENT METHOD:
SILVER EPOXY OR REFLOW NOT TO EXCEED AS INDICATED BELOW:

TEMP.(°C)	MAX.TIME(SEC)
215	90
230	60
245	30
260	15

FILTER IS ROHS COMPLIANT.
FILTER MAY BE LABELED OR ETCHED.

Confidential and Proprietary information of ComNav Engineering Inc. Do Not Duplicate or Use Without Permission. ComNav Engineering Inc. claims Copyright in this document as of the Creation, last revision, and last updated dates. All Rights Reserved.

ENGLISH / METRIC	CHECKED BY						
ENGLISH							
TOLERANCES UNLESS OTHERWISE SPECIFIED	DRAWN BY	A	24FEB10	KJR	DEV.	GEN. REV. PER 3187	
MACHINED SURFACES TO BE 125/0R BETTER	PFB	II	16DEC09	KJR	DEV.	INI. ISS. PER 3168	
REMOVE ALL BURRS	ENGINEER	KJR	REV	DATE	BY	DCN No.	REMARKS

ENGLISH (INCHES)	METRIC (MM)	SCALE	APPLIC:
.XX ±.02 .XXX ±.010	.X ±.50 .XX ±.25	2:1	CHIP AND WIRE FILTER
ANGLES ± 0° 30'	DATE	TITLE:	7BLC1-290/Z70-L

COMNAV ENGINEERING INC.	FINISH: BOARD: NICKEL/GOLD JACKET: NICKEL/SILVER	DRAWING No.	SHEET OF
		OL1062	1 1