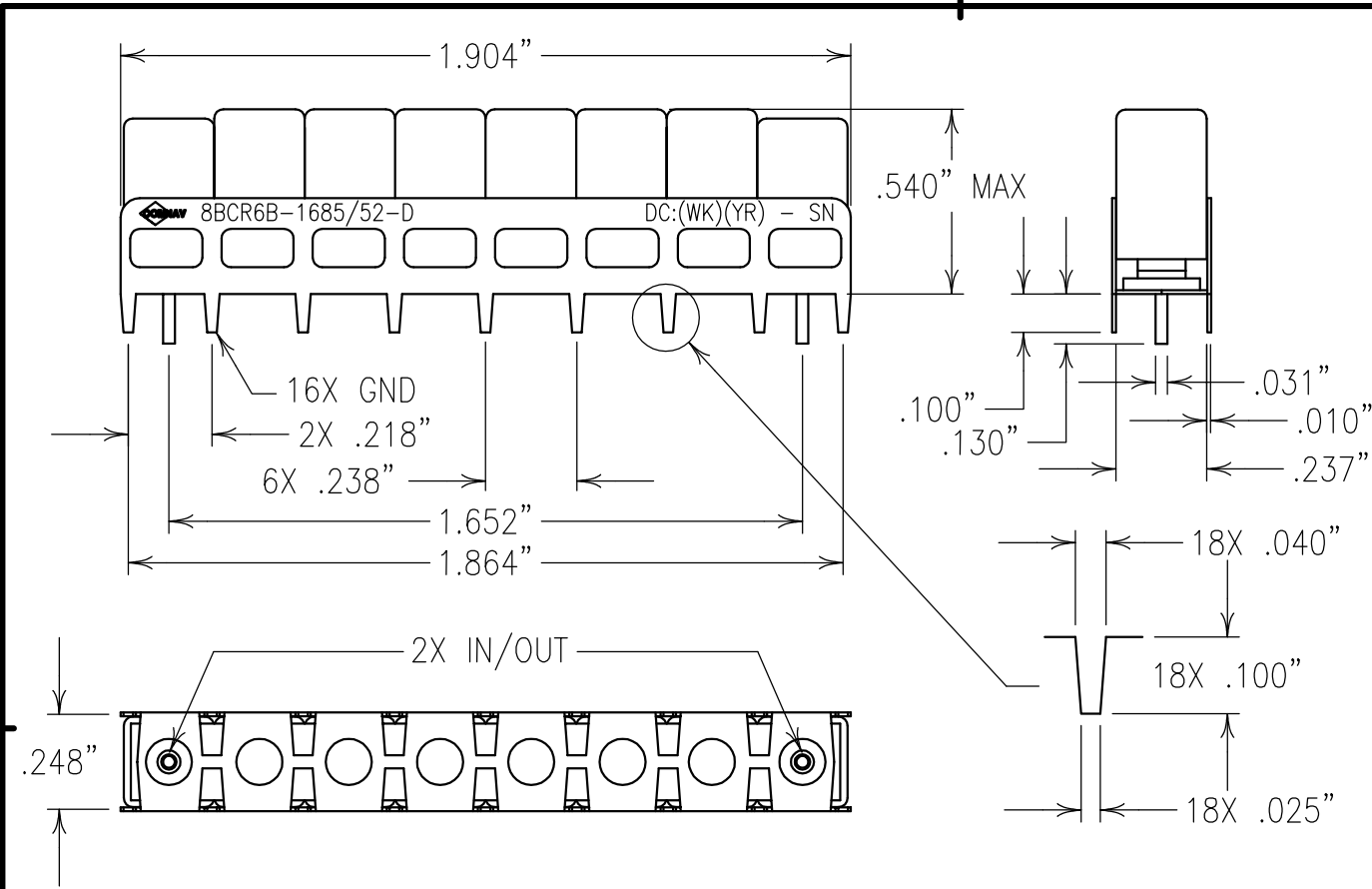


2

1

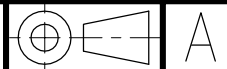


ELECTRICAL CHARACTERISTICS

CENTER FREQUENCY: 1685 MHz nom.  
 PASSBAND: 1685 MHz +/- 15 MHz  
 INSERTION LOSS: 2.75 dB MAX. @ F0  
 PB AMPLITUDE VARIATION:  
 +/- 0.3 dB MAX. OVER PASSBAND  
 PB GROUP DELAY VARIATION:  
 6.0 nSEC MAX.  
 PB RETURN LOSS: 15 dB MIN. IN/OUT  
 REJECTION:  
 40 dB MIN. @ 1635 MHz  
 40 dB MIN. @ 1725 MHz  
 80 dB MIN. @ 1570 MHz

COPY

Confidential and Proprietary information of ComNav Engineering Inc. Do Not Duplicate or Use Without Permission. ComNav Engineering Inc. claims Copyright in this document as of the Creation, last revision, and last updated dates. All Rights Reserved.



NOTES:

FILTER IS ROHS COMPLIANT.  
 FILTER MAY BE LABELED OR ETCHED.

ENGLISH / METRIC ENGLISH	CHECKED BY						
TOLERANCES UNLESS OTHERWISE SPECIFIED MACHINED SURFACES TO BE 125 / OR BETTER REMOVE ALL BURRS	DRAWN BY EEF	II	05OCT09	KJR	DEV.	INI. ISS. PER 3134	
ENGLISH (INCHES) .XX ±.02 .XXX ±.010	METRIC (MM) .X ±.5 .XX ±.25	SCALE 2:1	APPLIC: CERAMIC COAXIAL FILTER	DATE 05OCT09	TITLE: 8BCR6B-1685/52-D	DRAWING No. 0L1039	SHEET OF 1 1
ANGLES ± 0° 30'	FINISH: JACKET: NICKEL/SILVER RESONATOR: SILVER						