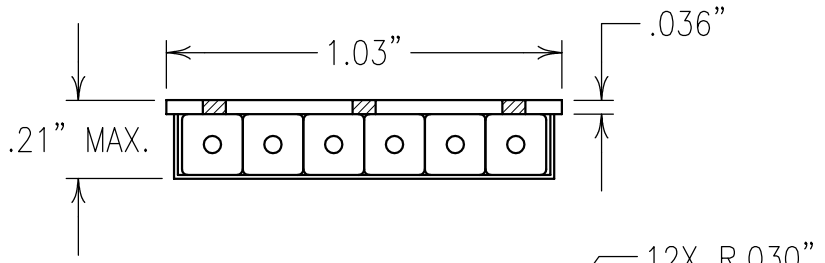


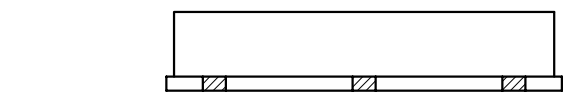
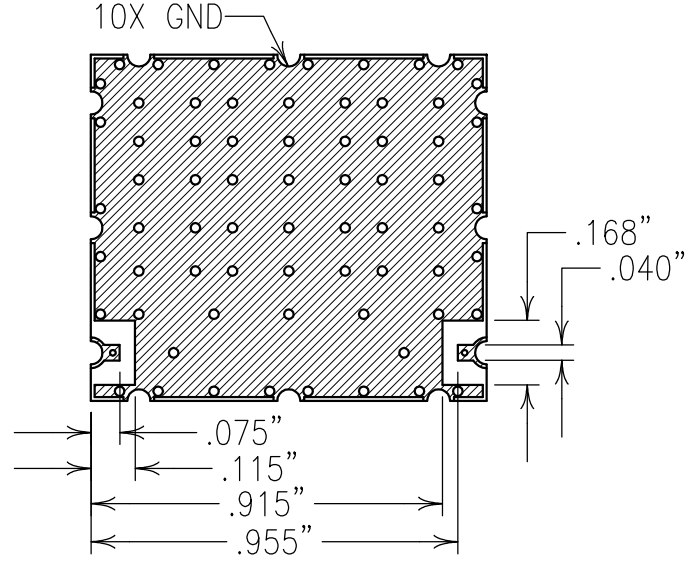
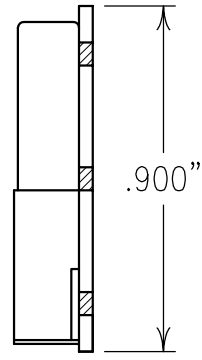
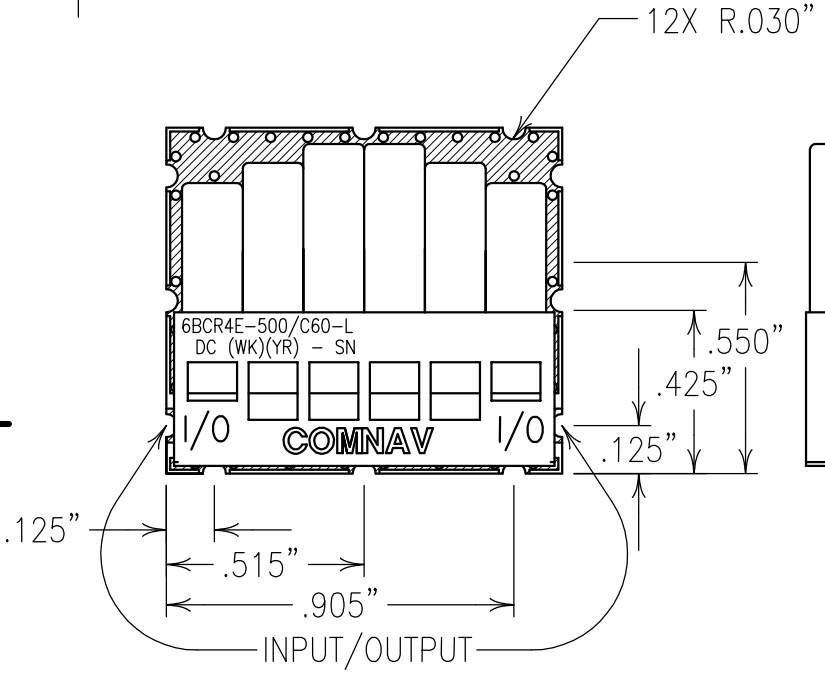
2

1



COPY

ELECTRICAL CHARACTERISTICS	
CENTER FREQUENCY:	500 MHz NOM.
PASSBAND:	480-520 MHz
PASSBAND FLATNESS:	1.0 dB max.
PASSBAND RIPPLE:	0.1 dB PEAK TO PEAK MAX.
PASSBAND VSWR:	1.5:1 MAX.
INSERTION LOSS:	1.75 dB MAX @ F0
REJECTION:	
976 MHz:	*70 dBc MIN
465 MHz:	25 dBc MIN
550 MHz:	25 dBc MIN
DC 400 MHz:	*70 dBc MIN
*DESIGN TO MEET: 60 dBc GUARANTEED.	



Confidential and Proprietary information of ComNav Engineering Inc. Do Not Duplicate or Use Without Permission. ComNav Engineering Inc. claims Copyright in this document as of the Creation, last revision, and last updated dates. All Rights Reserved.						A	
ENGLISH / METRIC CHECKED BY							
ENGLISH		EEF					
TOLERANCES UNLESS OTHERWISE SPECIFIED		DRAWN BY		II		16APR09 KJR DEV. INI. ISS. PER 3038	
MACHINED SURFACES TO BE 125 / OR BETTER		ENGINEER		KJR		REMARKS	
REMOVE ALL BURRS		REV		DATE		BY DCN No.	
ENGLISH (INCHES)		METRIC (MM)		SCALE		APPLIC:	
.XX ±.02		.X ±.25		2:1		CERAMIC COAXIAL FILTER	
.XXX ±.010		.XX ±.13		DATE		TITLE:	
ANGLES ± 0° 30'		16APR09				6BCR4E-500/C60-L	
		FINISH: BOARD: NI/AU PLATED COPPER		DRAWING No.		SHEET OF	
		JACKET: NI/SILVER		OL1012		1 1	
		RESONATOR: SILVER					

NOTES:
 NO TIN PLATING UNDER SOLDER MASK.
 RECOMMENDED ATTACHMENT METHOD: SILVER EPOXY
 OR REFLOW NOT TO EXCEED AS INDICATED BELOW:
 TEMP.(°C) MAX.TIME(SEC)

215	90	
230	60	
245	30	FILTER IS ROHS COMPLIANT.
260	15	FILTER MAY BE ETCHED OR LABELED.