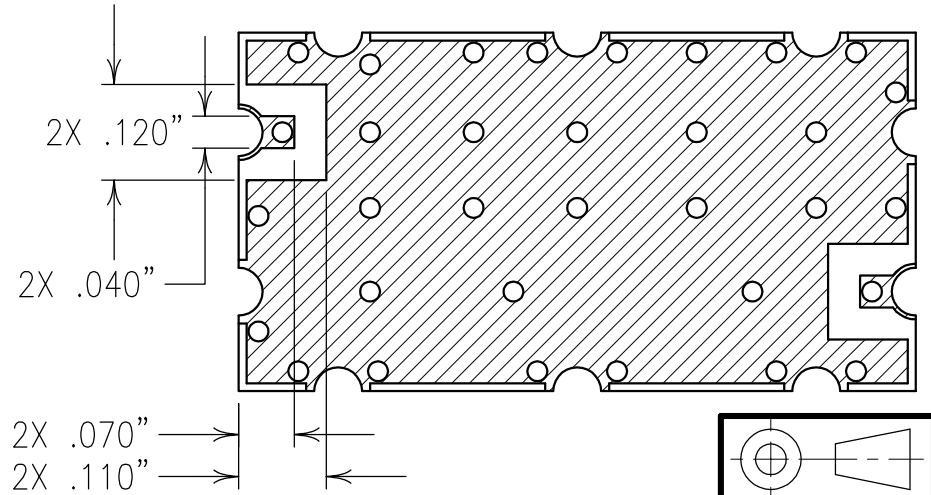
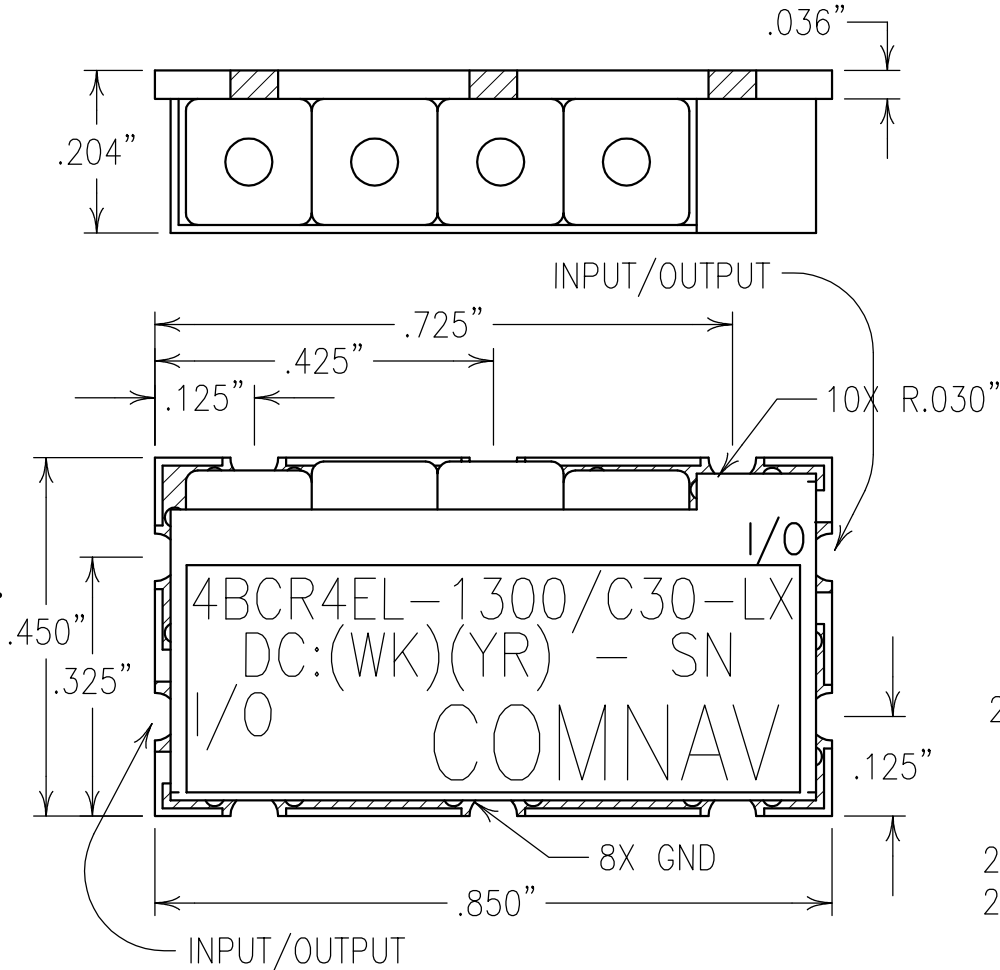


VIBRATION: THE FILTER SHALL MEET ITS ELECTRICAL SPECIFICATIONS WHILE EXPOSED TO VIBRATION ACCORDING TO SECTION 514.5, PROCEDURE 1, CATEGORY 13 OF MIL-STD-810F (PROPELLER AIRCRAFT)
 SHOCK: THE FILTER SHALL MEET ITS ELECTRICAL SPECIFICATIONS AFTER EXPOSURE TO SHOCK ACCORDING TO SECTION 516.5, PROCEDURE 1 (FUNCTIONAL SHOCK - AIRCRAFT)

ELECTRICAL CHARACTERISTICS

CENTER FREQUENCY:	1300 MHz nom.
1 dB BANDWIDTH:	30 MHz MIN
REJECTION:	
>40 dBc:	50-1230 MHz
>40 dBc:	1370-5000 MHz
>58 dBc:	1433-1447 MHz
>58 dBc:	1153-1167 MHz
INSERTION LOSS @ 1300 MHz:	5 dB MAX
FLATNESS (1285-1315 MHz):	0.5 dB
GROUP DELAY VARIATION:	
5 ns MAX.	1290-1310 MHz
10 ns MAX.	1285-1315 MHz
NOMINAL IMPEDANCE, I/O:	50 OHMS
RETURN LOSS ACROSS 1dB BW:	-14 dB
OPERATING TEMPERATURE:	-20 TO +80°C
STORAGE TEMPERATURE:	-20 TO +85°C
HUMIDITY, NON CONDENSING:	5-95%

COPY



Confidential and Proprietary information of ComNav Engineering Inc. Do Not Duplicate or Use Without Permission. ComNav Engineering Inc. claims Copyright in this document as of the Creation, last revision, and last updated dates. All Rights Reserved.

NOTES:

RECOMMENDED ATTACHMENT METHOD:	TEMP.(°C)	MAX. TIME (SECONDS)
SILVER EPOXY OR REFLOW NOT TO EXCEED:	215	90
	230	60
	245	30
	260	15

FILTER IS ROHS COMPLIANT.

ENGLISH / METRIC ENGLISH	CHECKED BY				
TOLERANCES UNLESS OTHERWISE SPECIFIED MACHINED SURFACES TO BE 125 OR BETTER REMOVE ALL BURRS	DRAWN BY EEF	A	06MAY09	KJR	DEV. GEN. REV. PER 3053
	ENGINEER KJR	II	06APR09	KJR	DEV. INI. ISS. PER 3033
		REV	DATE	BY	DCN No. REMARKS
ENGLISH (INCHES) .XX ±.02 .XXX ±.01	METRIC (MM) .X ±.25 .XX ±.13	SCALE 4:1	APPLIC: CERAMIC COAXIAL FILTER		
ANGLES ± 0° 30'	DATE 06MAY09	TITLE: 4BCR4EL-1300/C30-LX			
	FINISH: BOARD: NI/AU JACKET: NI/SILVER RESONATOR: SILVER	DRAWING No. OL1010	SHEET/OF 1/1		