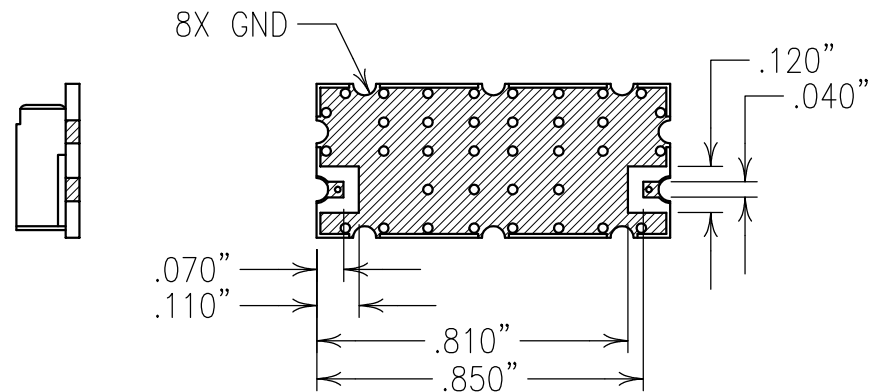
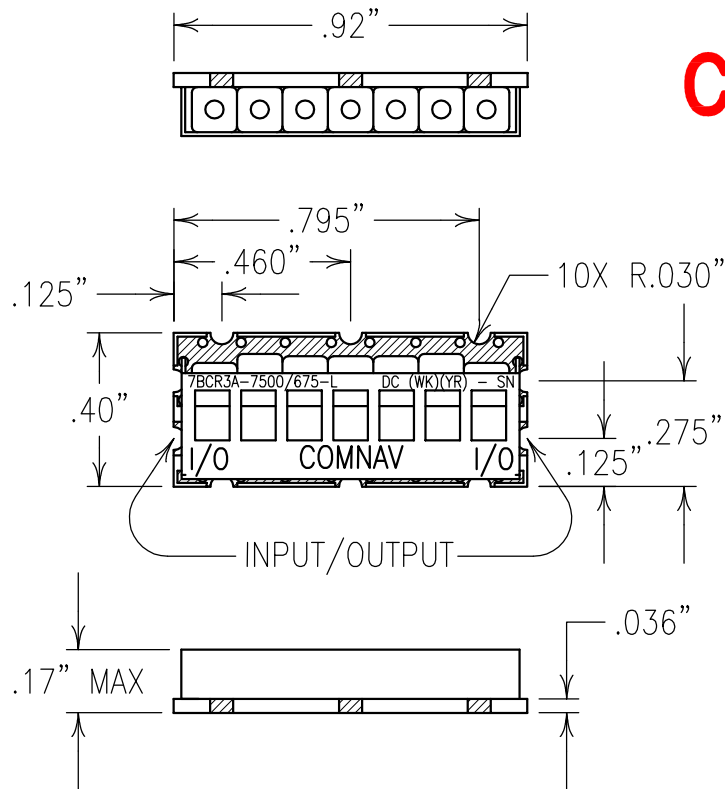


COPY

ELECTRICAL CHARACTERISTICS

CENTER FREQUENCY: 7500 MHz
 PASSBAND: 7250-7750 MHz
 PASSBAND INSERTION LOSS: 2.5 dB MAX
 AMPLITUDE RESPONSE: ± 0.15 dB MAX OVER ANY
 40 MHz SPAN IN PASSBAND
 P.B. GROUP DELAY VARIATION: 1.0 nSEC MAX
 PASSBAND VSWR: 15 dB MIN
 REJECTION:
 40 dBc MIN @ 8100 MHz
 65 dBc MIN @ 6300 MHz

B



NOTES:

RECOMMENDED FOOTPRINT: FP0115.

NO TIN PLATING UNDER SOLDER MASK.

RECOMMENDED ATTACHMENT METHOD: SILVER EPOXY
OR REFLOW NOT TO EXCEED AS INDICATED BELOW:

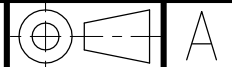
TEMP.(°C) MAX.TIME(SEC)

215	90
230	60
245	30
260	15


FILTER IS ROHS COMPLIANT.

FILTER MAY BE ETCHED OR LABELED.

Confidential and Proprietary information of ComNav Engineering Inc. Do Not Duplicate or Use Without Permission. ComNav Engineering Inc. claims Copyright in this document as of the Creation, last revision, and last updated dates. All Rights Reserved.



A

ENGLISH / METRIC ENGLISH		CHECKED BY				
TOLERANCES UNLESS OTHERWISE SPECIFIED		DRAWN BY PBF				
MACHINED SURFACES TO BE 125 / OR BETTER		ENGINEER	II	17FEB09	KJR	DEV.
REMOVE ALL BURRS		KJR	REV	DATE	BY	DCN No.
						INI. ISS. PER 3017
						REMARKS
ENGLISH (INCHES)	METRIC (MM)	SCALE 2:1	APPLIC: CERAMIC COAXIAL FILTER			
.XX ±.02	.X ±.25	DATE	TITLE:			
.XXX ±.010	.XX ±.13	17FEB09	7BCR3A-7500/675-L			
ANGLES ± 0° 30'						
 ENGINEERING INC.		FINISH:	BOARD: NI/AU PLATED COPPER			DRAWING No.
			JACKET: NI/SILVER			0L0994
			RESONATOR: SILVER			
						SHEET OF 1 1