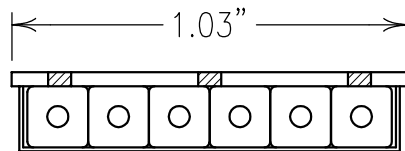


2

1

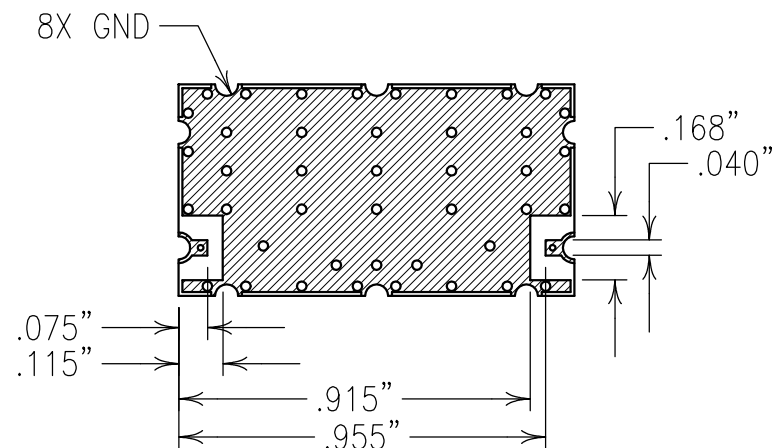
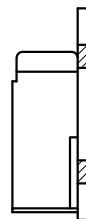
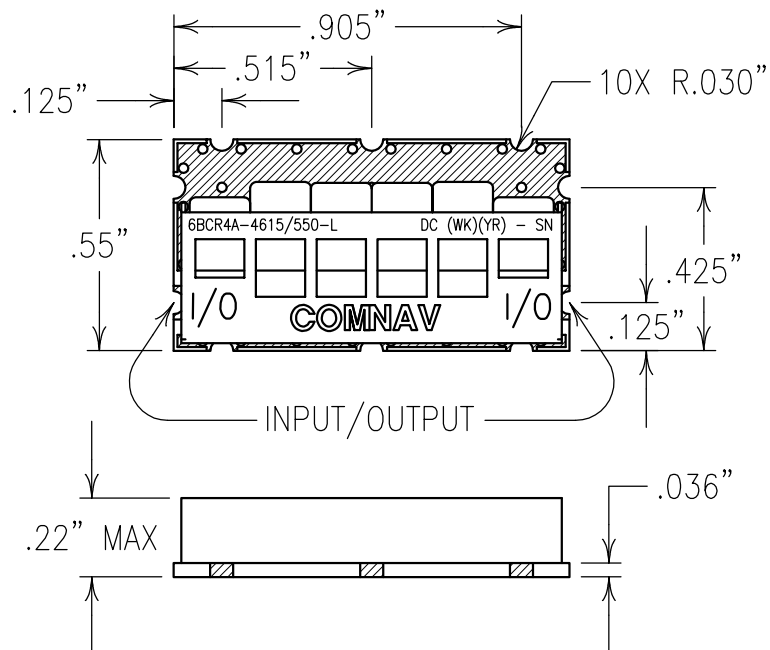


COPY

## ELECTRICAL CHARACTERISTICS

CENTER FREQUENCY: 4615 MHz  
 PASSBAND: 4400-4830 MHz  
 PASSBAND INSERTION LOSS: 2.0 dB MAX  
 PASSBAND RETURN LOSS: 1.5:1 MAX  
 REJECTION:  
   65 dBc MIN @ 3800 MHz  
   65 dBc MIN @ 5560 MHz  
 OPERATING TEMP.: +15 TO +35 °C

B



## NOTES:

RECOMMENDED FOOTPRINT: FP0123.

NO TIN PLATING UNDER SOLDER MASK.

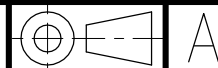
RECOMMENDED ATTACHMENT METHOD: SILVER EPOXY  
OR REFLOW NOT TO EXCEED AS INDICATED BELOW:

TEMP.(°C) MAX.TIME(SEC)


215	90
230	60
245	30
260	15

FILTER IS ROHS COMPLIANT.  
 FILTER MAY BE ETCHED OR LABELED.

Confidential and Proprietary information of ComNav Engineering Inc. Do Not Duplicate or Use Without Permission. ComNav Engineering Inc. claims Copyright in this document as of the Creation, last revision, and last updated dates. All Rights Reserved.



A

ENGLISH / METRIC ENGLISH		CHECKED BY					
TOLERANCES UNLESS OTHERWISE SPECIFIED		DRAWN BY PBF					
MACHINED SURFACES TO BE 125 / OR BETTER		ENGINEER		II	11FEB09	KJR	DEV.
REMOVE ALL BURRS		KJR		REV	DATE	BY	DCN No.
							INI. ISS. PER 3016
							REMARKS
ENGLISH (INCHES)		METRIC (MM)		APPLIC:			
.XX ±.02		.X ±.25		CERAMIC COAXIAL FILTER			
.XXX ±.010		.XX ±.13		TITLE:			
ANGLES ± 0° 30'		SCALE 2:1		6BCR4A-4615/550-L			
		DATE 16FEB09					
		FINISH:		DRAWING No.		SHEET OF	
		BOARD: NI/AU PLATED COPPER		0L0991		1 1	
		JACKET: NI/SILVER					
		RESONATOR: SILVER					