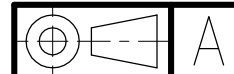
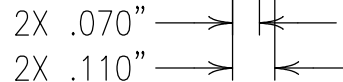
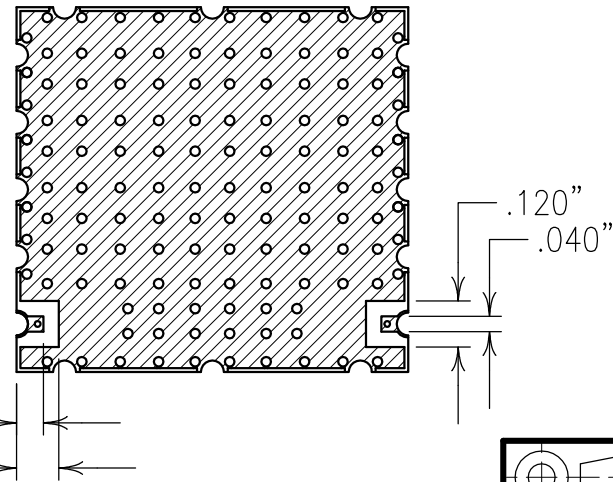
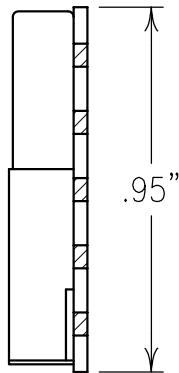
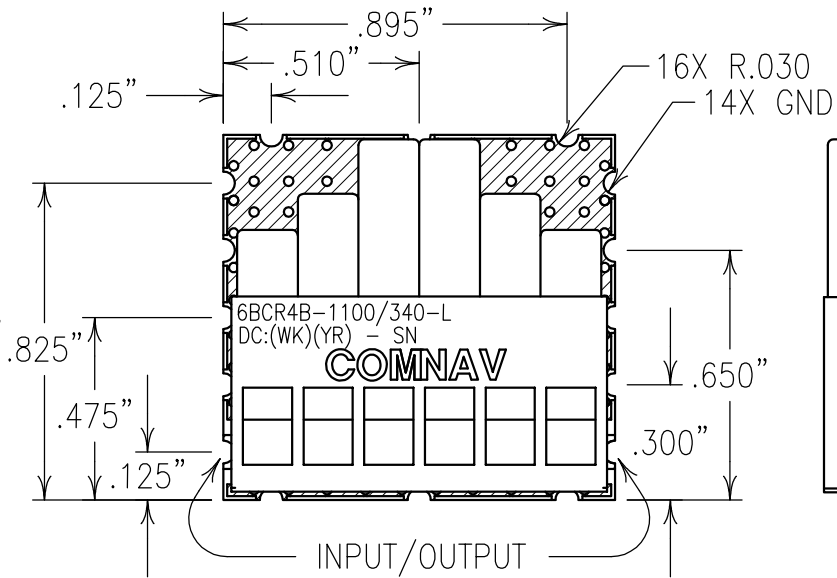


**COPY**

ELECTRICAL SPECIFICATIONS	
CENTER FREQUENCY:	1100 MHz
PASSBAND:	960-1240 MHz
INSERTION LOSS:	1.0 dB MAX
PASSBAND RIPPLE:	0.1 dB MAX OVER ANY 5 MHz WITHIN 960-1240 MHz
GROUP DELAY VAR.:	2 nSEC PTP MAX OVER ANY 5 MHz WITHIN 960-1240 MHz
PASSBAND VSWR:	1.5:1
ATTENUATION:	
DC-700 MHz:	50 dBc MIN
800, 1400 MHz:	30 dBc MIN
1650-2500 MHz:	50 dBc MIN
POWER:	1 WATT
TEMP. RANGE:	-40 TO +85°C
IMPEDANCE:	50 OHMS IN/OUT



Confidential and Proprietary information of ComNav Engineering Inc. Do Not Duplicate or Use Without Permission. ComNav Engineering Inc. claims Copyright in this document as of the Creation, last revision, and last updated dates. All Rights Reserved.

**NOTES:**

RECOMMENDED ATTACHMENT METHOD: SILVER EPOXY OR REFLOW NOT TO EXCEED AS INDICATED BELOW:

TEMP.(°C)	MAX.TIME(SEC)
215	90
230	60
245	30
260	15

FILTER IS ROHS COMPLIANT.  
FILTER MAY BE LABELED OR ETCHED.

ENGLISH / METRIC ENGLISH	CHECKED BY				
TOLERANCES UNLESS OTHERWISE SPECIFIED MACHINED SURFACES TO BE 125 / OR BETTER REMOVE ALL BURRS	DRAWN BY PBF	II	28JAN09	KJR	DEV.
ENGINEER KJR	REV	DATE	BY	DCN No.	REMARKS
ENGLISH (INCHES) .XX ±.02 .XXX ±.010	METRIC (MM) .X ±.5 .XX ±.25	SCALE 4:1	APPLIC: CERAMIC COAXIAL FILTER		
ANGLES ± 0° 30'	DATE 04MAR09	TITLE: 6BCR4B-1100/340-L			
	FINISH: BOARD: (ELECTROLESS NICKEL/IMMERSION GOLD) 150±50 MICROINCHES NICKEL, 2-10 MICROINCHES GOLD JACKET: NICKEL/SILVER RESONATOR: SILVER	DRAWING No. 0L0980	SHEET OF 1 1		