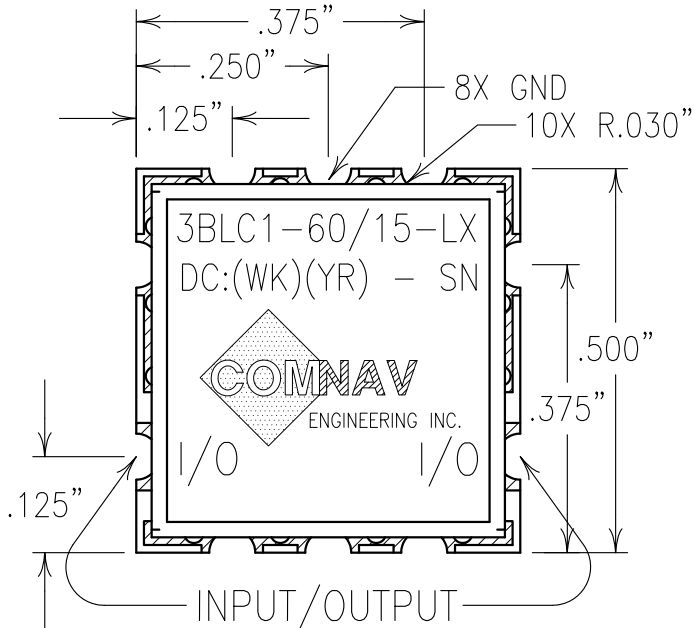
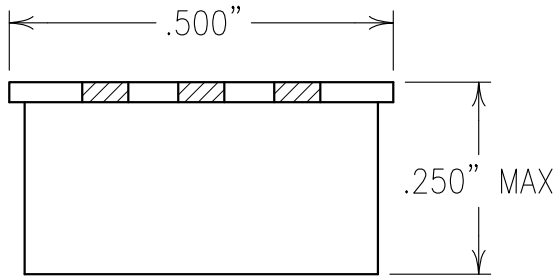
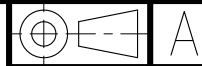
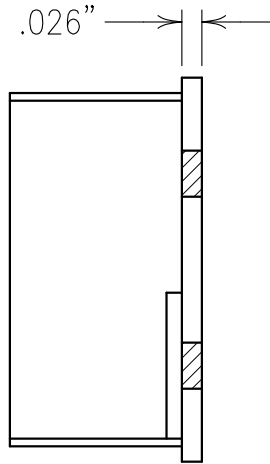


2

1

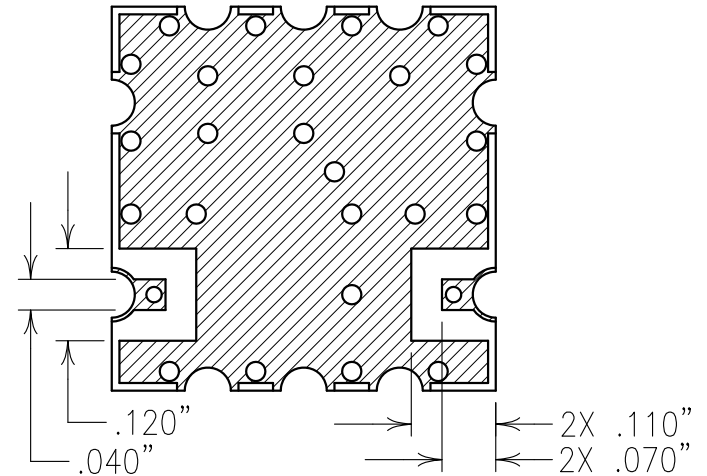


**COPY**



ELECTRICAL CHARACTERISTICS

PASSBAND:	60 MHz
1 dB BANDWIDTH:	±5.0 MHz
3 dB BANDWIDTH:	16 MHz MAX
INSERTION LOSS:	1.0 dB TYP. @ FO
VSWR @ FO ±4.0 MHz:	1.5:1 MAX/1.33:GOAL
AMPLITUDE VARIATION @ FO ±4.0 MHz:	±0.25 dB MAX
ABSOLUTE GROUP DELAY:	40 nSEC MAX @ FO
GROUP DELAY VARIATION @ ±4.0 MHz:	7.0 nSEC MAX
REJECTION:	
FO ±12 MHz:	7 dBc MIN
FO ±22 MHz:	18 dBc MIN
DC TO FO-40 MHz:	33 dBc MIN
FO +80 MHz TO 400 MHz:	50 dBc MIN
OPERATING TEMPERATURE:	-40° TO +85° C



Confidential and Proprietary information of ComNav Engineering Inc. Do Not Duplicate or Use Without Permission. ComNav Engineering Inc. claims Copyright in this document as of the Creation, last revision, and last updated dates. All Rights Reserved.

NOTES:

RECOMMENDED ATTACHMENT METHOD: SILVER EPOXY OR REFLOW NOT TO EXCEED AS INDICATED BELOW:

TEMP.(°C) MAX.	TIME(SEC)
215	90
230	60
245	30
260	15

FILTER MUST BE LABELED.  
FILTER IS ROHS COMPLIANT.

ENGLISH / METRIC ENGLISH	CHECKED BY	D	04DEC15	KJR	DEV.	GEN. REV. PER 3967
TOLERANCES UNLESS OTHERWISE SPECIFIED	DRAWN BY	C	20AUG15	KJR	DEV.	GEN. REV. PER 3943
MACHINED SURFACES TO BE 125 / OR BETTER	ENGINEER	B	10AUG09	KJR	DEV.	GEN. REV. PER 3096
REMOVE ALL BURRS	KJR	REV	DATE	BY	DCN No.	REMARKS
ENGLISH (INCHES)	METRIC (MM)	SCALE	APPLIC: CHIP AND WIRE FILTER			
.XX ±.02	.X ±.25	4:1	TITLE: 3BLC1-60/15-LX			
.XXX ±.010	.XX ±.13	DATE	04DEC15			
ANGLES ± 0° 30'	FINISH:	BOARD: NI/GOLD JACKET: NI/SILVER			DRAWING No.	SHEET OF 1 1
					0L0951	