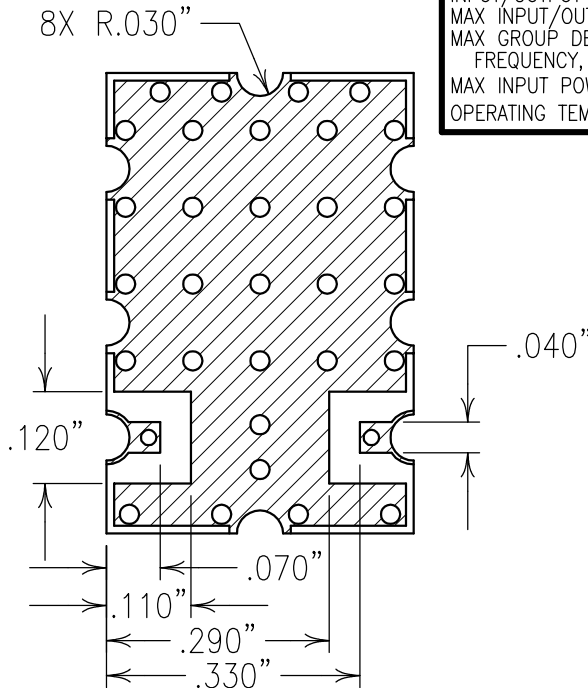
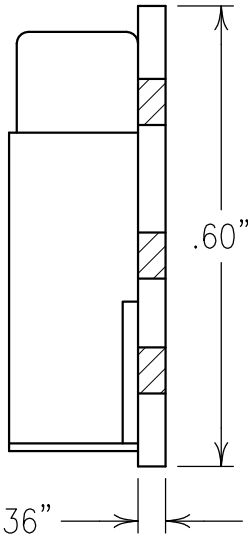
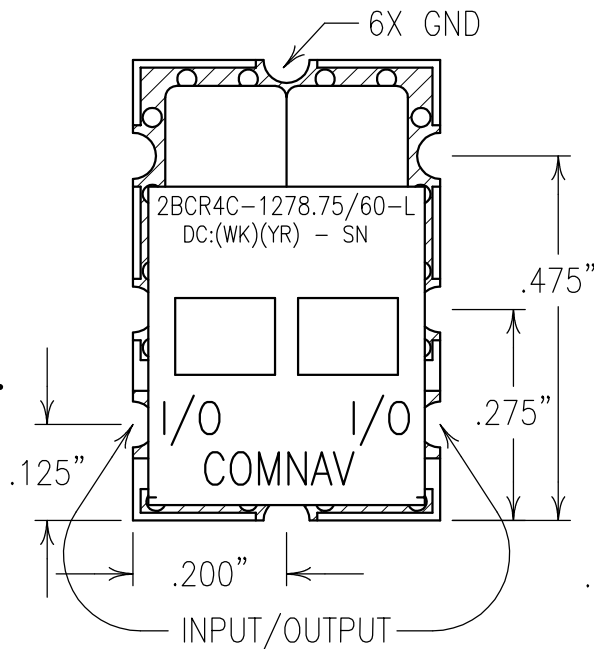
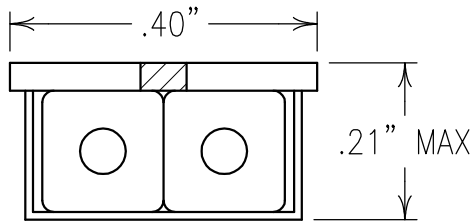
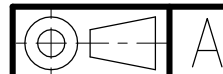


COPY



ELECTRICAL CHARACTERISTICS	
CENTER FREQUENCY:	1278.75 MHz
MIN. 0.5 dB BANDWIDTH:	1263.75-1293.75 MHz (30 MHz)
MAX INSERTION LOSS AT FO:	IL ≤ 2.0 dB
MINIMUM OUT OF BAND REJECTIONS:	
0 TO 1028.75 MHz:	≥ 30 dBc
1028.75 TO 1178.75 MHz:	≥ 20 dBc
1178.75 TO 1228.75 MHz:	≥ 8 dBc
1328.75 TO 1378.75 MHz:	≥ 8 dBc
1378.75 TO 1528.75 MHz:	≥ 20 dBc
ABOVE 1528.75 MHz:	≥ 30 dBc
INPUT/OUTPUT IMPEDANCE:	50 OHM
MAX INPUT/OUTPUT VSWR:	2.0:1
MAX GROUP DELAY VARIATION VERSUS FREQUENCY, INSIDE 0.5 dB BW:	≤ 3 nSEC PK/PK
MAX INPUT POWER INSIDE BOTH BW:	+30 dBm
OPERATING TEMPERATURE:	-45° TO +85°C



Confidential and Proprietary information of ComNav Engineering Inc. Do Not Duplicate or Use Without Permission. ComNav Engineering Inc. claims Copyright in this document as of the Creation, last revision, and last updated dates. All Rights Reserved.

NOTES:

RECOMMENDED ATTACHMENT METHOD: SILVER EPOXY OR REFLOW NOT TO EXCEED AS INDICATED BELOW:
TEMP.(°C) MAX. TIME(SEC)

215	90
230	60
245	30
260	15

FILTER MAY BE LABELED OR ETCHED.
FILTER IS ROHS COMPLIANT.

ENGLISH / METRIC ENGLISH		CHECKED BY					
TOLERANCES UNLESS OTHERWISE SPECIFIED		DRAWN BY					
MACHINED SURFACES TO BE 125 / OR BETTER		PBF		II		01OCT08 KJR DEV. INI. ISS. PER 2942	
REMOVE ALL BURRS		ENGINEER		REV		DATE BY DCN No. REMARKS	
ENGLISH (INCHES)		METRIC (MM)		SCALE		APPLIC: CERAMIC COAXIAL FILTER	
.XX ±.02		.X ±.25		DATE		TITLE: 2BCR4C-1278.75/60-L	
.XXX ±.010		.XX ±.13		07OCT08			
ANGLES ± 0° 30'		FINISH:		BOARD: NI/GOLD		DRAWING No.	
		JACKET: NI/SILVER		RESONATOR: SILVER		0L0950	
						SHEET OF 1 1	