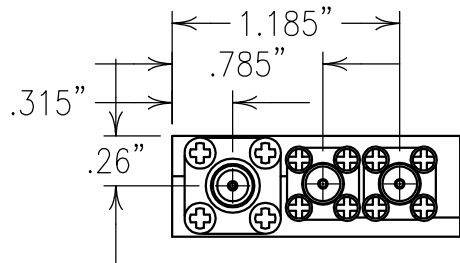


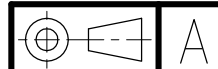
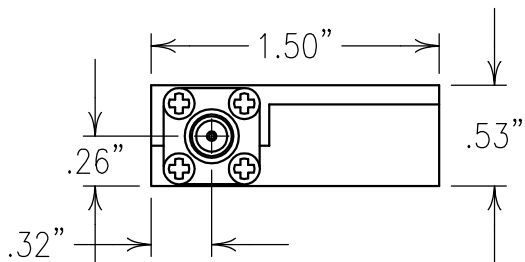
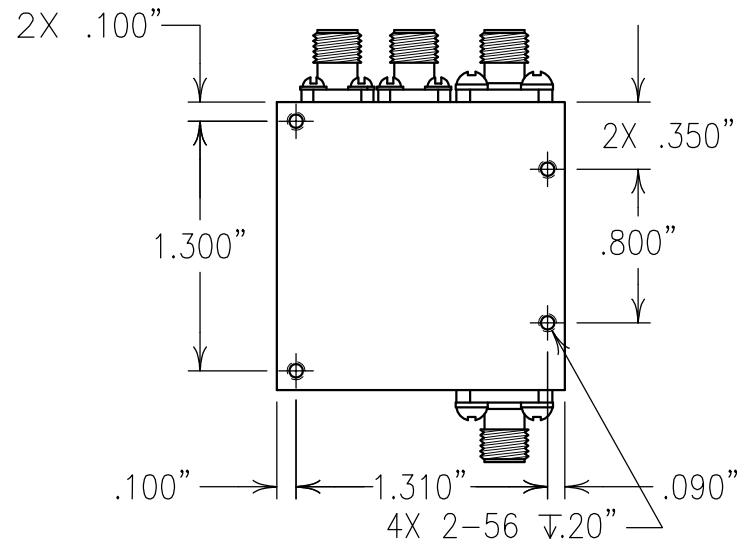
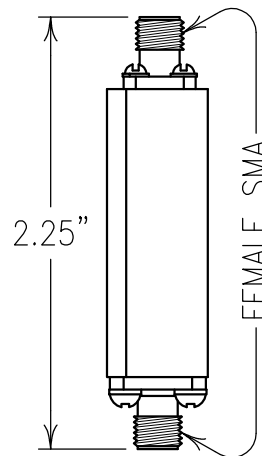
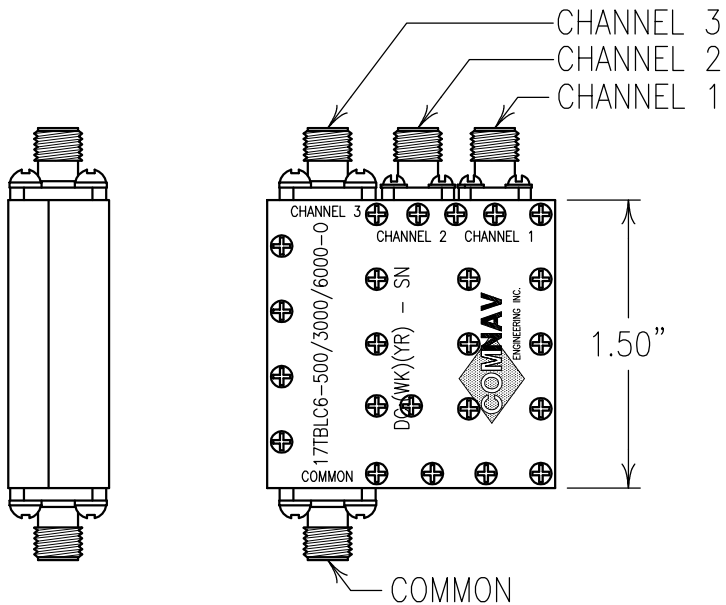
2

1



COPY

ELECTRICAL CHARACTERISTICS	
CHANNEL 1 PASSBAND:	DC-500 MHz
CHANNEL 1 REJECTION:	
625 MHz:	50 dBc
CHANNEL 2 PASSBAND:	500-3,000 MHz
CHANNEL 2 REJECTION:	
400 MHz:	50 dBc
3600 MHz:	30 dBc
CHANNEL 3 PASSBAND:	3,000-6,000 MHz
CHANNEL 3 REJECTION:	
2400 MHz:	45 dBc
CROSSOVER LOSS:	5 dB MAX
POWER:	33 dBm
VSWR:	1.5:1



NOTES:

FILTER MAY BE LABELED OR ETCHED.  
 FILTER IS ROHS COMPLIANT.

Confidential and Proprietary information of ComNav Engineering Inc. Do Not Duplicate or Use Without Permission. ComNav Engineering Inc. claims Copyright in this document as of the Creation, last revision, and last updated dates. All Rights Reserved.

ENGLISH / METRIC ENGLISH	CHECKED BY				
TOLERANCES UNLESS OTHERWISE SPECIFIED MACHINED SURFACES TO BE 125 OR BETTER REMOVE ALL BURRS	DRAWN BY	A	06NOV08	MJG	DEV. GEN. REV. PER 2954
	ENGINEER	II	03JUL08	KJR	DEV. INI. ISS. PER 2897
	MJG	REV	DATE	BY	DCN No. REMARKS

ENGLISH (INCHES) .XX ±.01 .XXX ±.005	METRIC (MM) .X ±.2 .XX ±.13	SCALE 1:1	APPLIC: CHIP AND WIRE FILTER
ANGLES ± 0° 30'	DATE 23JAN09	TITLE: 17TBLC6-500/3000/6000-0	

MATERIAL: ALUMINUM	DRAWING No. 0L0904
FINISH: SILVER	SHEET OF 1 1