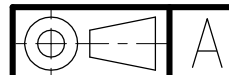
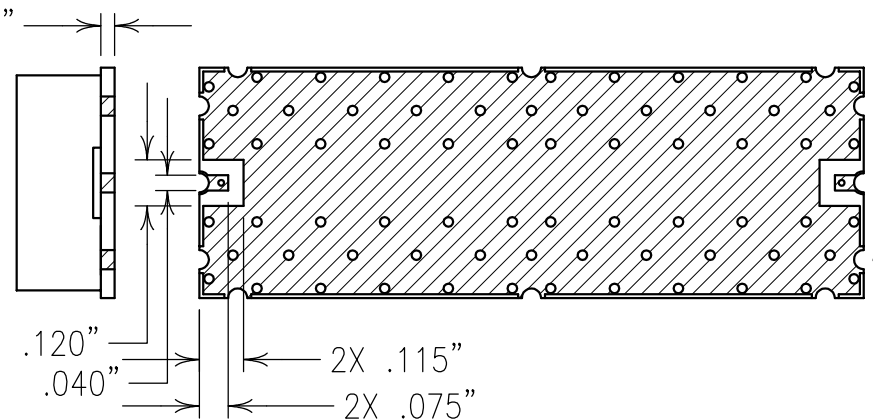
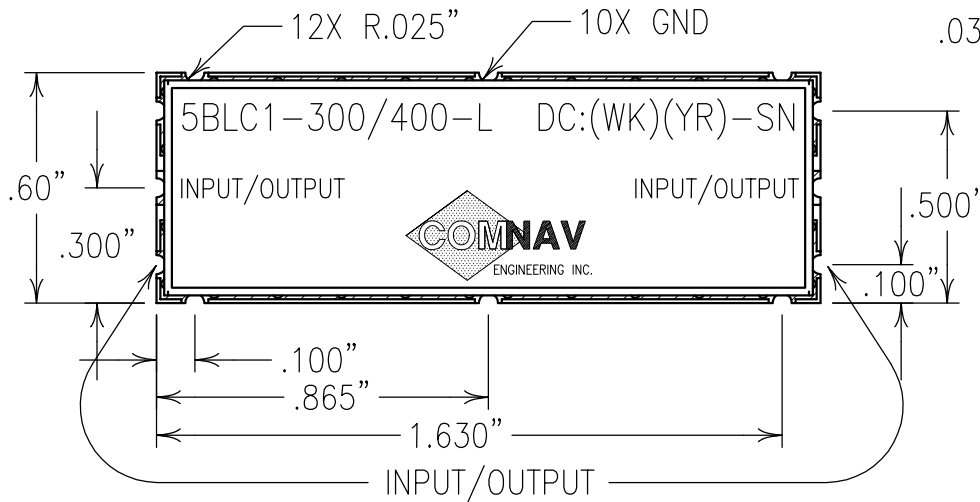
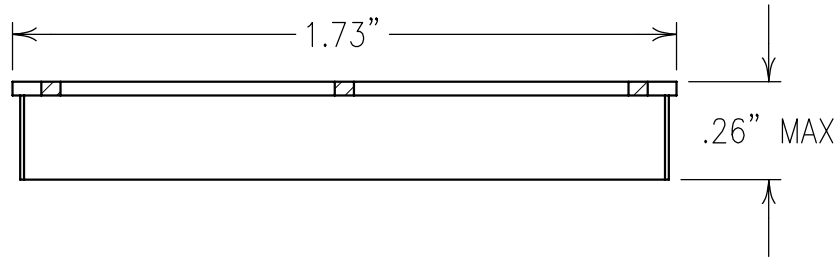


ELECTRICAL CHARACTERISTICS

CENTER FREQUENCY: 300 MHz
 PASSBAND: 100-500 MHz
 PASSBAND LOSS: 2.0 dB MAX
 REJECTION:
 30 dBc @ 50 MHz
 50 dBc @ 800 MHz
 OPERATING TEMP.: -40 TO +85°C
 PASSBAND VSWR: 1.5:1 MAX
 I/O IMPEDANCE: 50 OHMS
 POWER HANDLING: 1 WATT

COPY



Confidential and Proprietary information of ComNav Engineering Inc. Do Not Duplicate or Use Without Permission. ComNav Engineering Inc. claims Copyright in this document as of the Creation, last revision, and last updated dates. All Rights Reserved.

NOTES:

RECOMMENDED ATTACHMENT METHOD: SILVER EPOXY OR REFLOW NOT TO EXCEED AS INDICATED BELOW:

TEMP.(°C)	MAX. TIME(SEC)	
215	90	FILTER MAY BE LABELED OR ETCHED.
230	60	FILTER IS ROHS COMPLIANT.
245	30	
260	15	

ENGLISH / METRIC ENGLISH		CHECKED BY							
TOLERANCES UNLESS OTHERWISE SPECIFIED TO BE 125 OR BETTER		DRAWN BY PBF							
MACHINED SURFACES TO BE 125 OR BETTER		ENGINEER KJR		II	18JUN08	KJR	DEV.	INI. ISS. PER 2894	
REMOVE ALL BURRS		REV	DATE	BY	DCN No.	REMARKS			
ENGLISH (INCHES)	METRIC (MM)	SCALE 2:1		APPLIC: CERAMIC COAXIAL FILTER					
.XX ±.02	.X ±.25	DATE 09JUL08		TITLE: 5BLC1-300/400-L					
.XXX ±.010	.XX ±.13	ANGLES ± 0° 30'		FINISH: BOARD: NI/GOLD JACKET: NI/SILVER RESONATOR: SILVER				DRAWING No. 0L0901	
COMNAV ENGINEERING INC.						SHEET OF 1 1			