

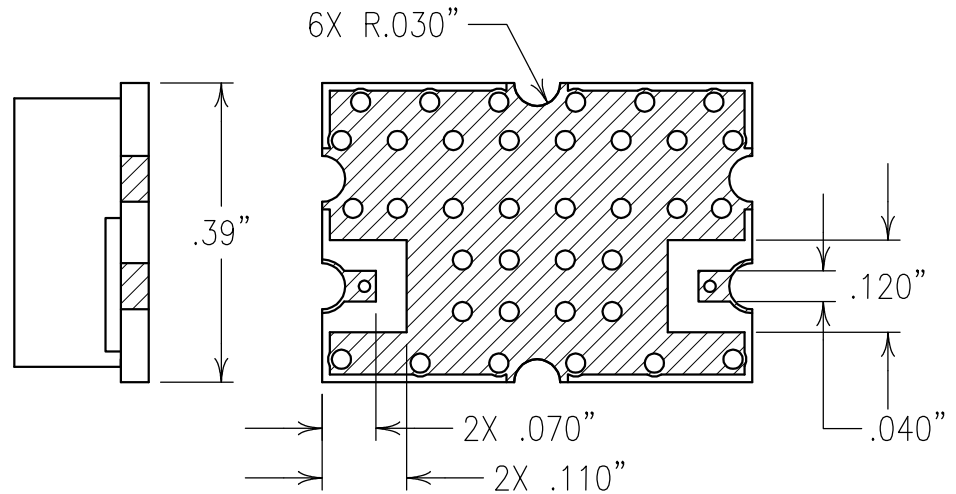
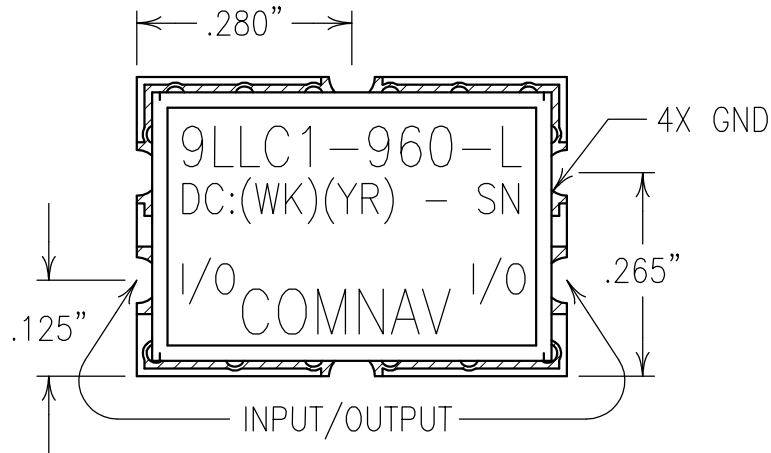
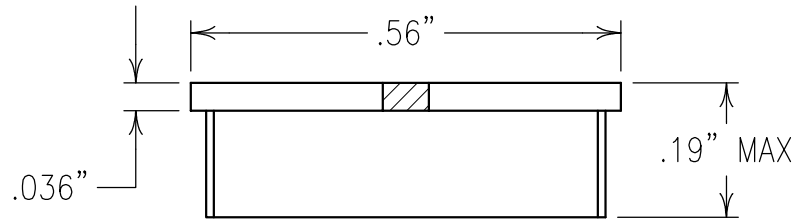
2

1

ELECTRICAL CHARACTERISTICS

CENTER FREQUENCY: 960 MHz
 PASSBAND: 400-950 MHz
 PASSBAND LOSS: 1.0 dB MAX
 PHASE LINEARITY: ±7.5 DEGREES MAX
 FLATNESS: ±0.1 dB MAX
 VSWR: 1.7:1 TYPICAL
 REJECTION: 50 dBc MIN @ 1900; 60 dB GOAL

COPY



NOTES:

RECOMMENDED ATTACHMENT METHOD: SILVER EPOXY
 OR REFLOW NOT TO EXCEED AS INDICATED BELOW:
 TEMP.(°C) MAX. TIME(SEC)

215	90
230	60
245	30
260	15

FILTER MAY BE LABELED OR ETCHED.
 FILTER IS ROHS COMPLIANT.

Confidential and Proprietary information of ComNav Engineering Inc. Do Not Duplicate or Use Without Permission. ComNav Engineering Inc. claims Copyright in this document as of the Creation, last revision, and last updated dates. All Rights Reserved.

ENGLISH / METRIC ENGLISH	CHECKED BY						
TOLERANCES UNLESS OTHERWISE SPECIFIED	DRAWN BY						
MACHINED SURFACES TO BE 125 OR BETTER	ENGINEER	II	06FEB08	KJR	DEV.	INI.	ISS. PER 2829
REMOVE ALL BURRS	KJR	REV	DATE	BY	DCN No.	REMARKS	
ENGLISH (INCHES)	METRIC (MM)	SCALE	APPLIC: CHIP AND WIRE FILTER				
.XX ±.02	.X ±.25	4:1	TITLE: 9LLC1-960-L				
.XXX ±.010	.XX ±.13	DATE	15FEB08				
ANGLES ± 0° 30'		FINISH:	BOARD: NI/GOLD JACKET: NI/SILVER RESONATOR: SILVER				DRAWING No. 010838
COMNAV ENGINEERING INC.							SHEET OF 1 1