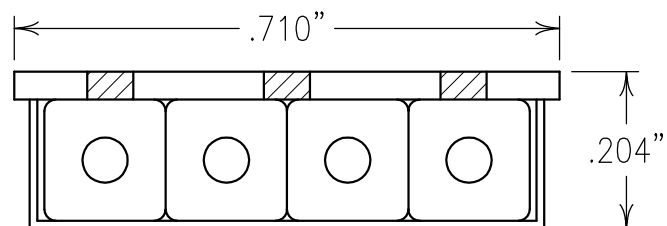


2

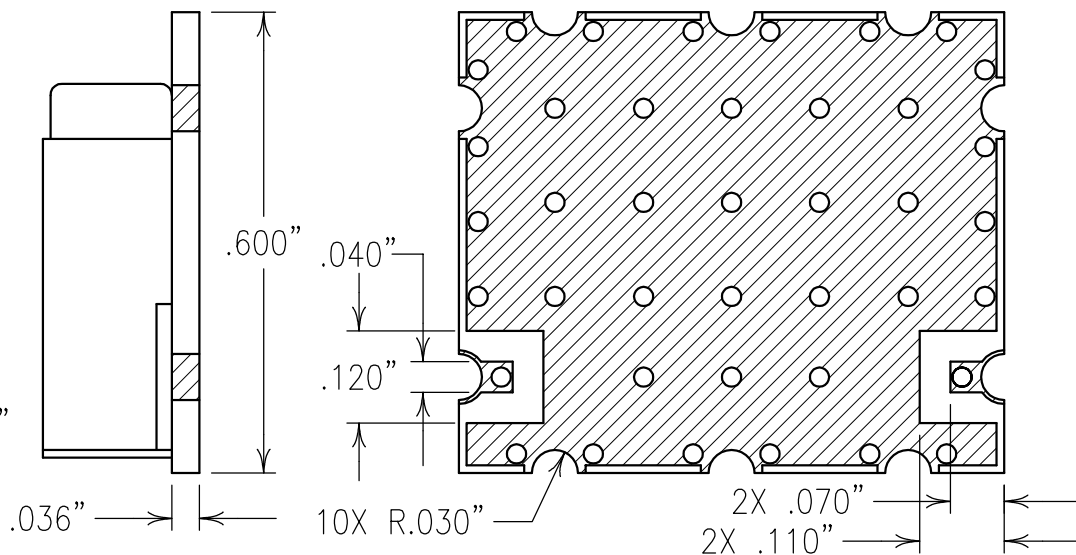
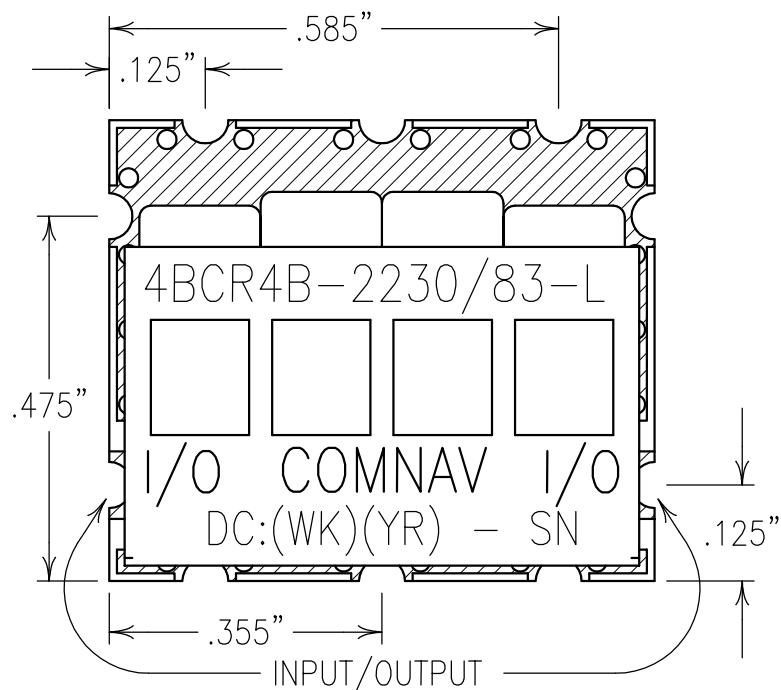
1



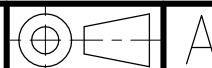
COPY

ELECTRICAL CHARACTERISTICS

CENTER FREQUENCY: 2230 MHz
 INSERTION LOSS: 1.5 dB MAX @ F₀
 3 dB BANDWIDTH: 83 MHz MIN
 1 dB BANDWIDTH: 76 MHz MIN
 VSWR: 1.5:1 TYPICAL
 REJECTION:
 50 dBc MIN @ 2034 AND 2414 MHz



Confidential and Proprietary information of ComNav Engineering Inc. Do Not Duplicate or Use Without Permission. ComNav Engineering Inc. claims Copyright in this document as of the Creation, last revision, and last updated dates. All Rights Reserved.



NOTES:

RECOMMENDED FOOTPRINT: FP0111.

RECOMMENDED ATTACHMENT METHOD: SILVER EPOXY
 OR REFLOW NOT TO EXCEED AS INDICATED BELOW:
 TEMP.(°C) MAX. TIME(SEC)

215	90
230	60
245	30
260	15

FILTER MAY BE LABELED OR ETCHED.
 FILTER IS ROHS COMPLIANT.

ENGLISH / METRIC ENGLISH	CHECKED BY						
TOLERANCES UNLESS OTHERWISE SPECIFIED	DRAWN BY						
MACHINED SURFACES TO BE 125 / OR BETTER	ENGINEER	II	13DEC07	KJR	DEV.	INI. ISS. PER 2802	
REMOVE ALL BURRS	KJR	REV	DATE	BY	DCN No.	REMARKS	
ENGLISH (INCHES)	METRIC (MM)	SCALE	APPLIC: CERAMIC COAXIAL FILTER				
.XX ±.02	.X ±.25	4:1	TITLE: 4BCR4B-2230/83-L				
.XXX ±.010	.XX ±.13	DATE	02JAN08				
ANGLES ± 0° 30'		FINISH:	BOARD: NI/GOLD JACKET: NI/SILVER RESONATOR: SILVER				
COMNAV ENGINEERING INC.		DRAWING No.	0L0820				SHEET OF 1 1