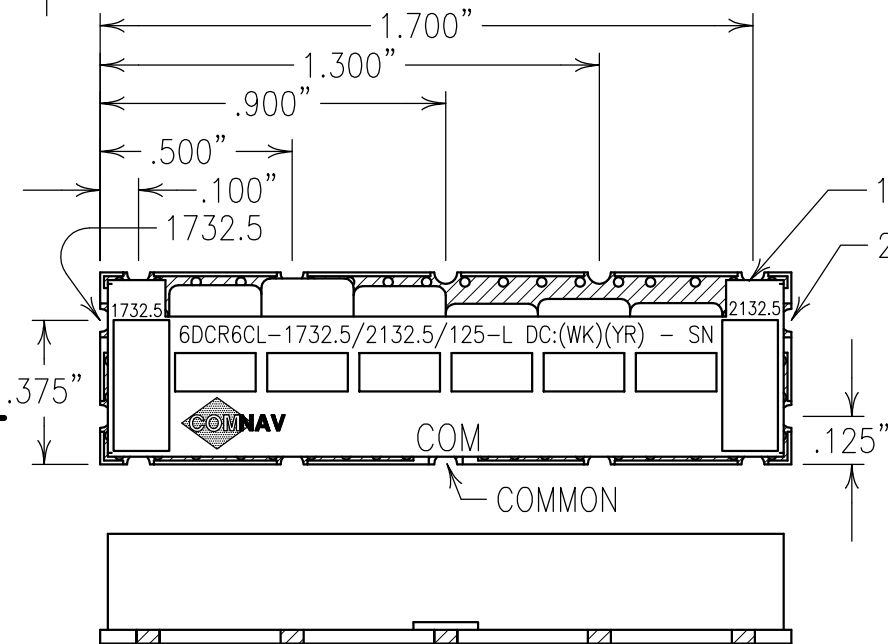
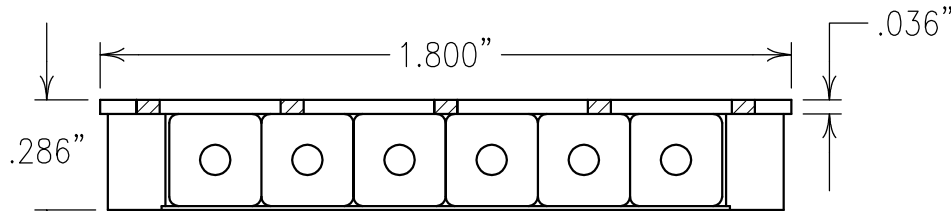
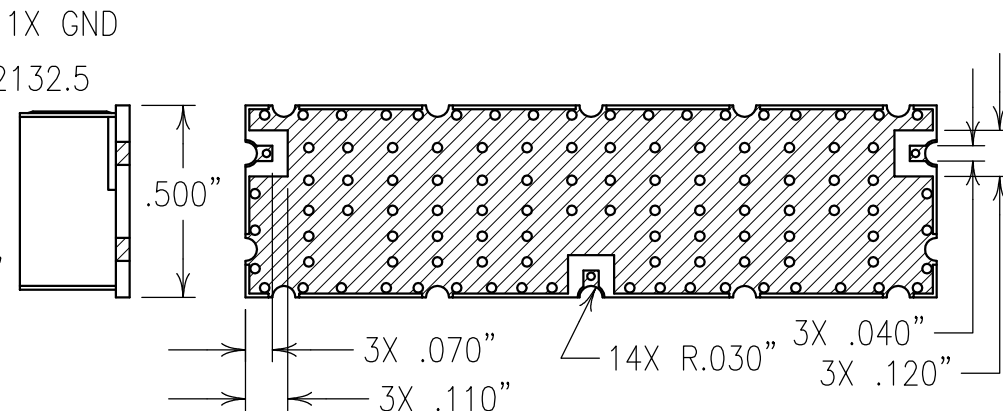


2

1



COPY



ELECTRICAL CHARACTERISTICS

CENTER FREQUENCY (FO): 1732.5 MHz AND 2132.5 MHz
 INSERTION LOSS: 0.8 dBa MAX @ FO
 0.3 dB PASSBAND: 45 MHz MIN
 PASSBAND RETURN LOSS: 13 dB MIN
 REJECTION TX/RX: 50 dBc MIN RX TO TX
 OPERATING TEMP.: -40 TO +60°C
 50 dB ATTENUATION: 3-6.5 GHz
 MAX. POWER: 10 WATTS

NOTES:

COMNAV PART NUMBER AND DATE CODE ARE ETCHED ON THE JACKET OR PRINTED ON THE LABEL.

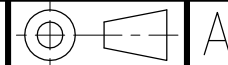
RECOMMENDED FOOTPRINT: FP0133.

RECOMMENDED ATTACHMENT METHOD: SILVER EPOXY OR REFLOW NOT TO EXCEED AS INDICATED BELOW:
 TEMP.(°C) MAX.TIME(SEC)

215	90
230	60
245	30
260	15

FILTER IS ROHS COMPLIANT.
 FILTER MAY BE LABELED OR ETCHED.

Confidential and Proprietary information of ComNav Engineering Inc. Do Not Duplicate or Use Without Permission. ComNav Engineering Inc. claims Copyright in this document as of the Creation, last revision, and last updated dates. All Rights Reserved.



ENGLISH / METRIC ENGLISH	CHECKED BY				
TOLERANCES UNLESS OTHERWISE SPECIFIED MACHINED SURFACES TO BE 125 OR BETTER REMOVE ALL BURRS	DRAWN BY PBF				
ENGLISH (INCHES) .XX ±.02 .XXX ±.01	METRIC (MM) .X ±.25 .XX ±.13	ENGINEER KJR	REV II	DATE 13NOV07	BY KJR
ANGLES ± 0° 30'	SCALE 2:1	APPLIC: CERAMIC COAXIAL FILTER	DEV.	DCN No.	REMARKS INI. ISS. PER 2779
	DATE 20NOV07	TITLE: 6DCR6CL-1732.5/2132.5/125-L			



FINISH: BOARD: NI/GOLD
 JACKET: NI/SILVER
 RESONATOR: SILVER

DRAWING No.
 0L0799

SHEET/OF
 1/1