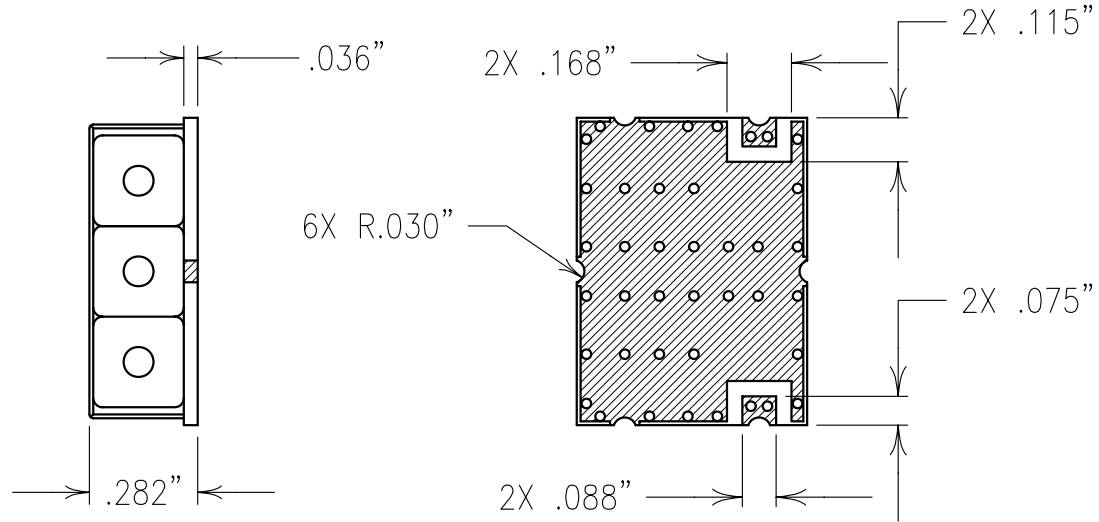
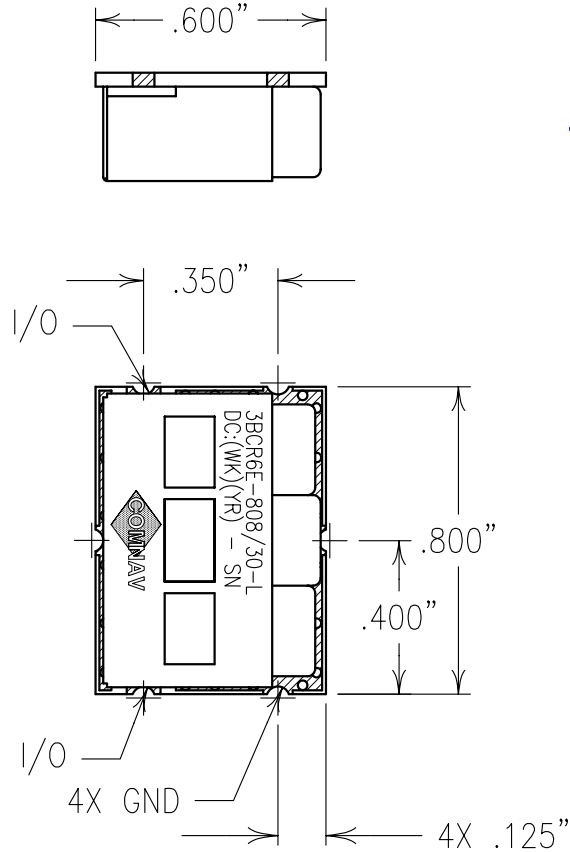


COPY

Customer Validation:

ELECTRICAL CHARACTERISTICS	
CENTER FREQUENCY:	808 MHz
PASSBAND FREQ.:	799-817 MHz
PASSBAND ATTEN.:	<1.5 dB
PASSBAND RIPPLE:	<0.5 dB
PASSBAND VSWR:	1.5:1 MAX.
ATTENUATION:	
>10 dB:	851-862 MHz
>40 dB:	688.8-706.8 MHz
>10 dB:	769-776 MHz
OPERATING TEMP.:	-30° TO +75°C
IMPEDANCE:	50 OHMS IN/OUT



NOTES:

FOR RECOMMENDED FOOTPRINT SEE FP0028.
 RECOMMENDED ATTACHMENT METHOD: SILVER EPOXY
 OR REFLOW NOT TO EXCEED AS INDICATED BELOW:

TEMP.(°C)	MAX.TIME(SEC)
215	90
230	60
245	30
260	15

Confidential and Proprietary information of ComNav Engineering Inc. Do Not Duplicate or Use Without Permission. ComNav Engineering Inc. claims Copyright in this document as of the Creation, last revision, and last updated dates. All Rights Reserved.						A	
ENGLISH / METRIC ENGLISH		CHECKED BY					
TOLERANCES UNLESS OTHERWISE SPECIFIED		DRAWN BY		II		26OCT07	
MACHINED SURFACES TO BE 125/100 OR BETTER		ENGINEER		KJR		DEV.	
REMOVE ALL BURRS		REV		DATE		BY	
ENGLISH (INCHES)		METRIC (MM)		SCALE		APPLIC:	
.XX ±.02		.X ±.50		2:1		CERAMIC COAXIAL FILTER	
.XXX ±.010		.XX ±.25		DATE		TITLE:	
ANGLES ± 0° 30'		06NOV07		3BCR6E-808/30-L			
		FINISH:		DRAWING No.		SHEET OF	
		BOARD: NI/AU PLATED COPPER		0L0795		1 1	
		JACKET: NI/SILVER					
		RESONATOR: SILVER					