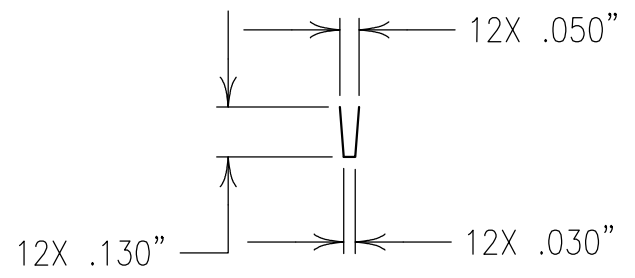
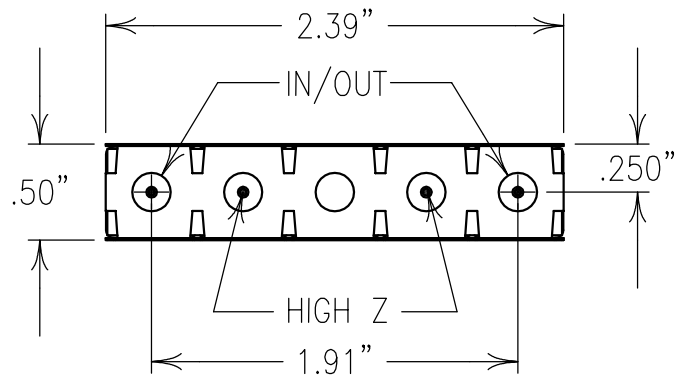
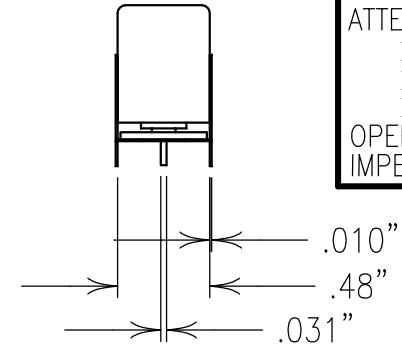
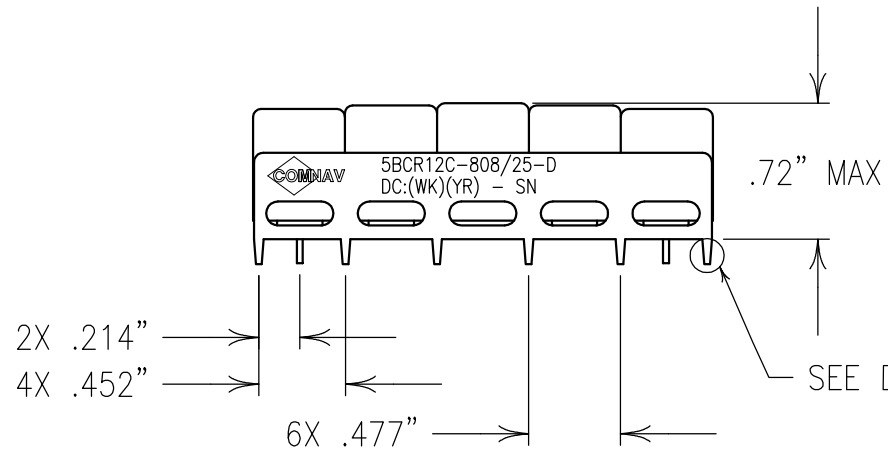


ELECTRICAL CHARACTERISTICS	
CENTER FREQUENCY:	808 MHz
PASSBAND FREQ.:	799-817 MHz
PASSBAND ATTN.:	<1.5 dB
PASSBAND RIPPLE:	<0.5 dB
PASSBAND VSWR:	1.5:1 MAX.
ATTENUATION:	
>70 dB:	688.8-706.8 MHz
>50 dB:	851-862 MHz
>50 dB:	769-776 MHz
OPERATING TEMP.:	-30° TO +75°C
IMPEDANCE:	50 OHMS IN/OUT



COPY

NOTES:

DC: IS ON ONE SIDE ONLY.

PART MAY BE EXPOSED TO 240°C FOR 30 SEC.,
OR 260°C FOR 15 SEC.

FOR BEST RESULTS HAND OR WAVE SOLDERING IS SUGGESTED.

FOR RECOMMENDED FOOTPRINT SEE FP0076.

Confidential and Proprietary information of ComNav Engineering Inc. Do Not Duplicate or Use Without Permission. ComNav Engineering Inc. claims Copyright in this document as of the Creation, last revision, and last updated dates. All Rights Reserved.

ENGLISH / METRIC ENGLISH	CHECKED BY					
TOLERANCES UNLESS OTHERWISE SPECIFIED	DRAWN BY	A	28NOV07	EJG	DEV. GEN. REV. PER 2788	
MACHINED SURFACES TO BE 125 / OR BETTER	ENGINEER	II	26OCT07	KJR	DEV. INI. ISS. PER 2767	
REMOVE ALL BURRS	ENGINEER	REV	DATE	BY	DCN No. REMARKS	
ENGLISH (INCHES)	METRIC (MM)	SCALE	APPLIC: CERAMIC COAXIAL FILTER			
.XX ±.02	.X ±.50	1:1	TITLE: 5BCR12C-808/25-D			
.XXX ±.010	.XX ±.25	DATE	28NOV07			
ANGLES ± 0° 30'	FINISH:		DRAWING No.			
COMNAV ENGINEERING INC.		JACKET: NI/SILVER RESONATOR: SILVER PINS: TIN PLATED	0L0794			

SHEET OF 1 1