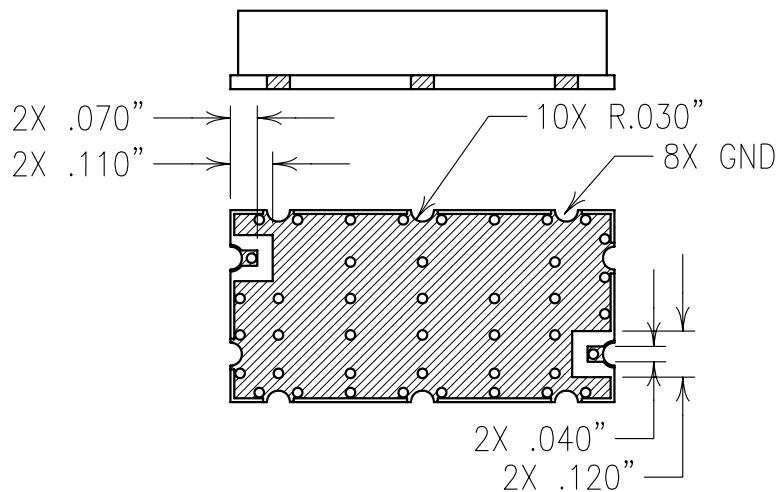
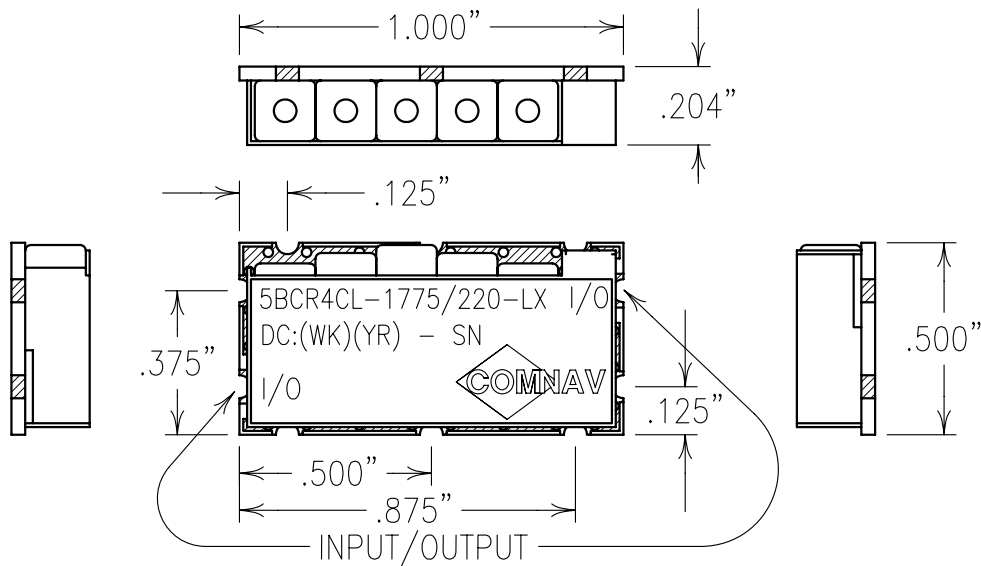


2

1

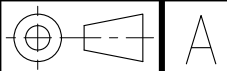


ELECTRICAL CHARACTERISTICS

CENTER FREQUENCY:	1775 MHz
PASSBAND:	1700-1850 MHz
PASSBAND INSERTION LOSS:	1.5 dB MAX
RETURN LOSS:	1.5:1 TYPICAL
REJECTION:	
1223-1227 MHz:	47 dBa
1573-1577 MHz:	36 dBa
2200-2500 MHz:	47 dBa
3400-7400 MHz:	44 dBa MIN
POWER HANDLING:	+20 dBm (100 mW)
OPERATING TEMP.:	-20° to +80° C
STORAGE TEMP.:	-20° to +85° C
HUMIDITY:	5 TO +95%
OPERATING ALTITUDE:	70,000 FEET*
*DESIGN TO MEET	

COPY

Confidential and Proprietary information of ComNav Engineering Inc. Do Not Duplicate or Use Without Permission. ComNav Engineering Inc. claims Copyright in this document as of the Creation, last revision, and last updated dates. All Rights Reserved.



ENGLISH / METRIC ENGLISH		CHECKED BY							
TOLERANCES UNLESS OTHERWISE SPECIFIED		DRAWN BY							
MACHINED SURFACES TO BE 125/ OR BETTER		PBF		II		05SEP07		KJR DEV. INI. ISS. PER 2728	
REMOVE ALL BURRS		ENGINEER		REV		DATE		BY DCN No. REMARKS	
ENGLISH (INCHES)		METRIC (MM)		SCALE		APPLIC: CERAMIC COAXIAL FILTER			
.XX ±.01		.X ±.2		2:1		TITLE: 5BCR4CL-1775/220-LX			
.XXX ±.005		.XX ±.13		DATE					
ANGLES ± 0° 30'		21SEP07							
COMNAV ENGINEERING INC		FINISH: BOARD: NI/GOLD				DRAWING No.		SHEET OF	
		JACKET: NI/SILVER				0L0764		1 1	
		RESONATOR: SILVER							

NOTES:

RECOMMENDED ATTACHMENT METHOD: SILVER EPOXY OR REFLOW NOT TO EXCEED AS INDICATED BELOW:
TEMP.(°C) MAX.TIME(SEC)

215	90
230	60
245	30
260	15

FILTER MAY BE LABELED OR ETCHED
FILTER IS ROHS COMPLIANT