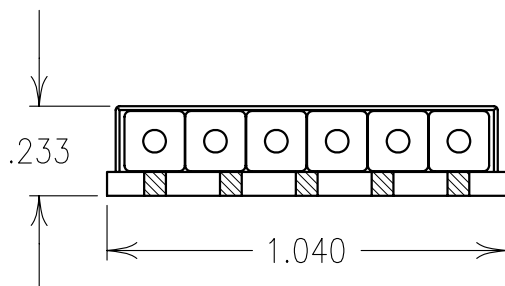
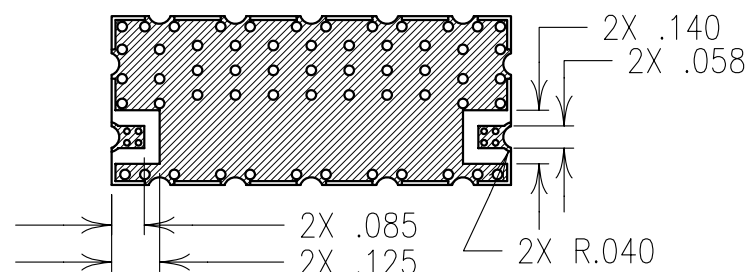
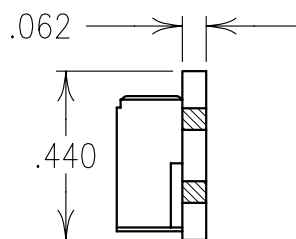
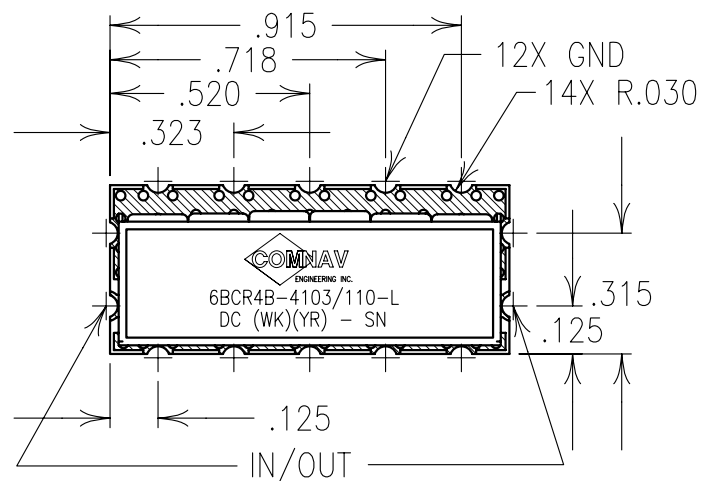


## ELECTRICAL CHARACTERISTICS

CENTER FREQUENCY:	4103 MHz
INSERTION LOSS @ F0:	< 2.5 dB
FLATNESS:	0.5 dB MAX 4068-4138 MHz
RETURN LOSS:	< -9.6 dBc 4068-4138 MHz
REJECTION:	> 80 dBc 3882 MHz
REJECTION:	> 80 dBc 4344 MHz

**COPY**

## NOTES:

FOR RECOMMENDED FOOTPRINT SEE FP0023.

NO TIN PLATING UNDER SOLDER MASK.

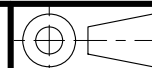
RECOMMENDED ATTACHMENT METHOD: SILVER EPOXY  
OR REFLOW NOT TO EXCEED AS INDICATED BELOW:

TEMP.(°C) MAX.TIME(SEC)


215	90
230	60
245	30
260	15

FILTER MAY BE ETCHED OR LABELED.  
FILTER IS ROHS COMPLIANT.

Confidential and Proprietary information of ComNav Engineering Inc. Do Not Duplicate or Use Without Permission. ComNav Engineering Inc. claims Copyright in this document as of the Creation, last revision, and last updated dates. All Rights Reserved.



A

ENGLISH / METRIC ENGLISH		CHECKED BY						
TOLERANCES UNLESS OTHERWISE SPECIFIED  MACHINED SURFACES TO BE 125 / OR BETTER  REMOVE ALL BURRS		DRAWN BY PBF						
		ENGINEER KJR		II	26DEC06	KJR	DEV.	INI. ISS. PER 2600
		REV	DATE	BY	DCN No.	REMARKS		
ENGLISH (INCHES) .XX ±.02 .XXX ±.010		METRIC (MM) .X ±.25 .XX ±.13		SCALE 2:1		APPLIC: CERAMIC COAXIAL FILTER		
ANGLES ± 0° 30'		DATE 26DEC06		TITLE: 6BCR4B-4103/110-L				
		FINISH: BOARD: NI/AU PLATED COPPER JACKET: NI/SILVER RESONATOR: SILVER				DRAWING No.		SHEET OF
						0L0695		1 1

A