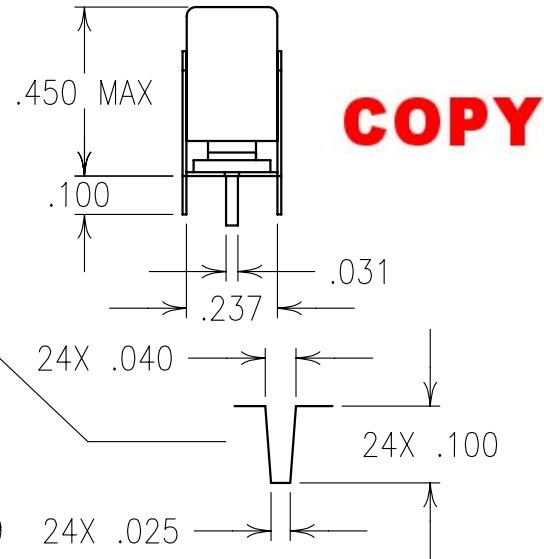
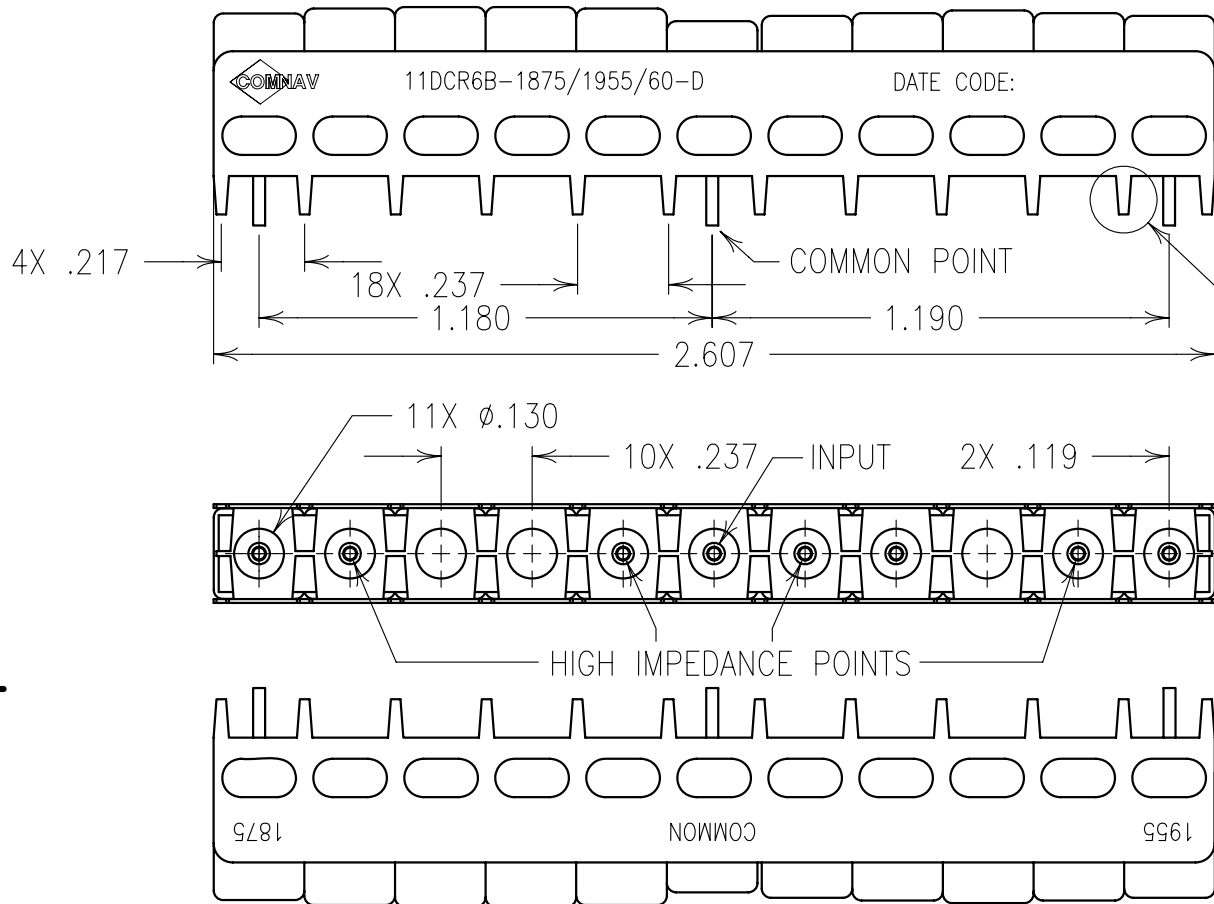


2

1

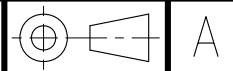


COPY

ELECTRICAL SPECIFICATIONS

	RX	TX
CENTER FREQUENCY(MHz):	1875 NOM	1955 NOM
3dB BANDWIDTH(MHz):	55 NOM	55 NOM
PASSBAND(MHz):	1850-1900	1930-1980
INSERTION LOSS (MAX):	3.5 dB	3.5 dB
PASSBAND FLATNESS(MAX):	1.5 dB	1.5 dB
VSWR:	<1.7:1	<1.7:1
CO-CHANNEL ISOLATION:	>53 dBc MIN	
IMPEDANCE(OHMS):	50 (ALL PORTS)	

Confidential and Proprietary information of ComNav Engineering Inc. Do Not Duplicate or Use Without Permission. ComNav Engineering Inc. claims Copyright in this document as of the Creation, last revision, and last updated dates. All Rights Reserved.



NOTES:

- 1) DC: IS ON ONE SIDE ONLY.
 - 2) THERE MUST BE A MINIMUM OF .050 AIR SPACE BETWEEN GROUND AND HIGH IMPEDANCE POINTS. THIS MAY BE ACCOMPLISHED BY RAISING THE FILTER OR DRILLING OUT THE BOARD.
- IT IS RECOMMENDED THAT VIA HOLES ARE USED FOR IN/OUT AND COMMON PIN CONNECTIONS TO BOARD.
- FILTER MAY BE ETCHED OR LABELED.
 FILTER IS ROHS COMPLIANT

ENGLISH / METRIC ENGLISH	CHECKED BY				
TOLERANCES UNLESS OTHERWISE SPECIFIED	DRAWN BY				
MACHINED SURFACES TO BE 125 / OR BETTER REMOVE ALL BURRS	ENGINEER	II	06NOV06	KJR	DEV. INI. ISS. PER 2583
ENGLISH (INCHES)	METRIC (MM)	SCALE	APPLIC: CERAMIC COAXIAL DIPLEXER		
.XX ±.01 .XXX ±.005	.X ±.2 .XX ±.13	DATE	TITLE: 11DCR6B-1875/1955/60-D		
ANGLES ± 0° 30'		15NOV06			
COMNAV ENGINEERING INC	MATERIAL: JACKET:NI/SIL PINS:1/2 HARD BRASS	DRAWING No.	SHEET OF 1 1		
	FINISH: JACKET:NONE PINS:TIN PLATED	0L0688			