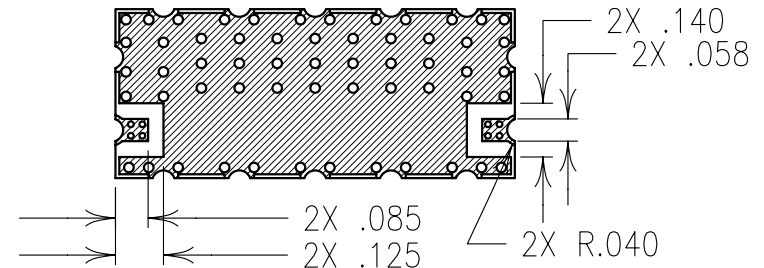
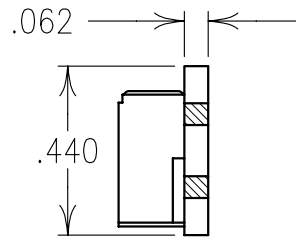
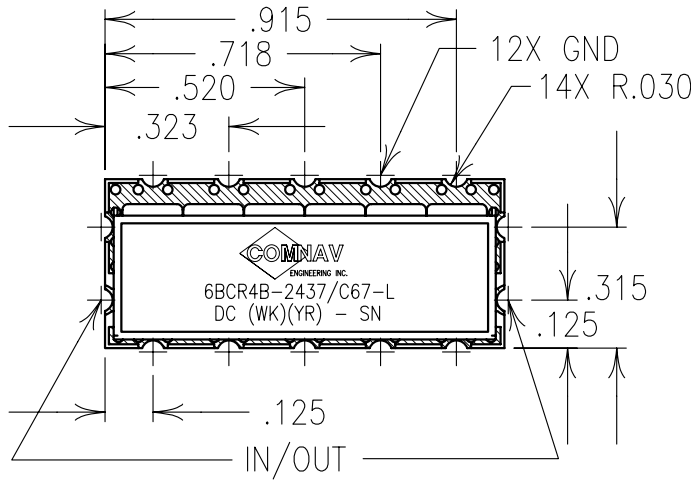
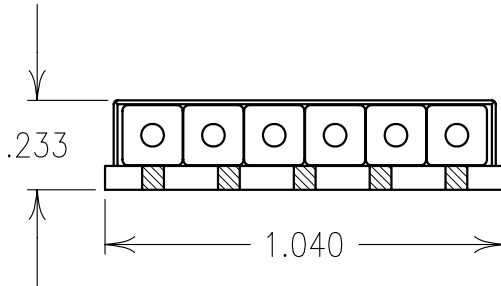


ELECTRICAL CHARACTERISTICS

CENTER FREQUENCY:	2437 MHz
3 dB BANDWIDTH:	65 MHz NOM
6.5 dB BANDWIDTH:	2401, 2473 MHz MIN
PASSBAND:	2412-2462 MHz
PASSBAND LOSS:	< 3.5 dB
PASSBAND VSWR:	<1.7:1
PASSBAND FLATNESS:	<1.0 dB
REJECTION:	
25 dBc:	2300-2390, 2483-2570 MHz
30 dBc:	DC-2300, 2570-4000 MHz

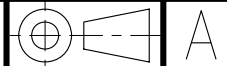
COPY



NOTES:

- FOR RECOMMENDED FOOTPRINT SEE FP0023.
 - NO TIN PLATING UNDER SOLDER MASK.
 - RECOMMENDED ATTACHMENT METHOD: SILVER EPOXY OR REFLOW NOT TO EXCEED AS INDICATED BELOW:
- | TEMP.(°C) | MAX.TIME(SEC) |
|-----------|---------------|
| 215 | 90 |
| 230 | 60 |
| 245 | 30 |
| 260 | 15 |
- FILTER MAY BE ETCHED OR LABELED.
 FILTER IS ROHS COMPLIANT.

Confidential and Proprietary information of ComNav Engineering Inc. Do Not Duplicate or Use Without Permission. ComNav Engineering Inc. claims Copyright in this document as of the Creation, last revision, and last updated dates. All Rights Reserved.



ENGLISH / METRIC ENGLISH	CHECKED BY				
TOLERANCES UNLESS OTHERWISE SPECIFIED	DRAWN BY PBF				
MACHINED SURFACES TO BE 125 / OR BETTER REMOVE ALL BURRS	ENGINEER GML	II	21FEB06	GML	DEV. INI. ISS. PER 2492
ENGLISH (INCHES) .XX ±.02 .XXX ±.010	METRIC (MM) .X ±.25 .XX ±.13	SCALE 2:1	DATE 09MAR06	APPLIC: CERAMIC COAXIAL FILTER	TITLE: 6BCR4B-2437/C67-L
ANGLES ± 0° 30'	FINISH: BOARD: NI/AU PLATED COPPER JACKET: NI/SILVER RESONATOR: SILVER	DRAWING No. OL0631		SHEET OF 1 1	