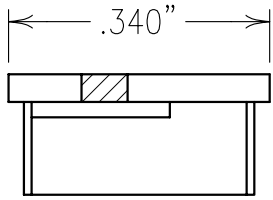


2

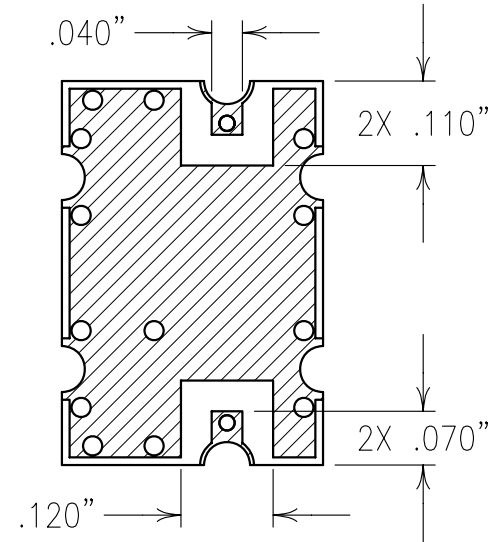
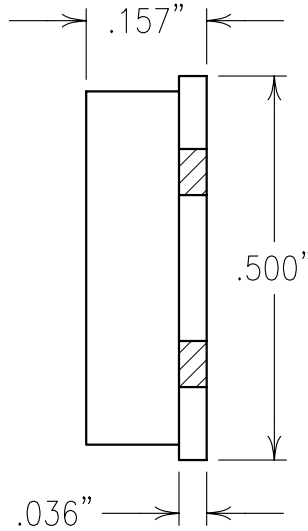
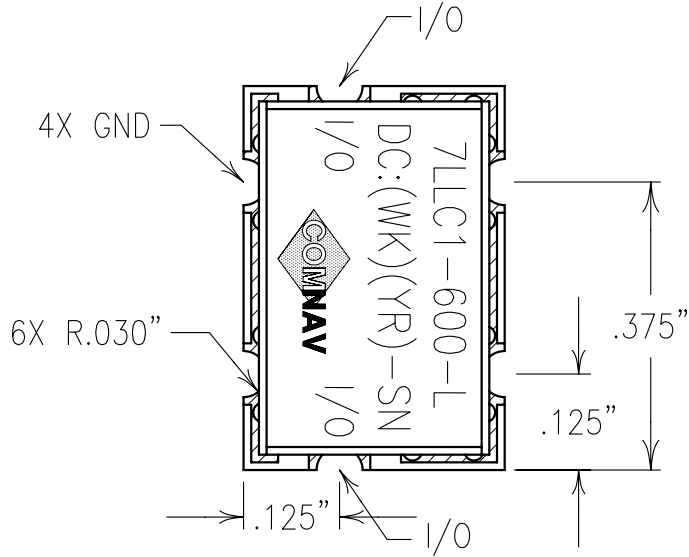


COPY

1

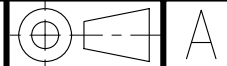
ELECTRICAL CHARACTERISTICS

PASSBAND:	DC-600 MHz
PASSBAND INSERTION LOSS:	1.0 dB MAX
PASSBAND VSWR:	1.7:1 TYP
40 dBc REJECTION:	680 MHz



B

Confidential and Proprietary information of ComNav Engineering Inc. Do Not Duplicate or Use Without Permission. ComNav Engineering Inc. claims Copyright in this document as of the Creation, last revision, and last updated dates. All Rights Reserved.



NOTES:

RECOMMENDED ATTACHMENT METHOD: SILVER EPOXY OR REFLOW NOT TO EXCEED AS INDICATED BELOW:

TEMP.(°C) MAX.TIME(SEC)

215	90
230	60
245	30
260	15

FILTER IS ROHS COMPLIANT

ENGLISH / METRIC ENGLISH	CHECKED BY					
TOLERANCES UNLESS OTHERWISE SPECIFIED	DRAWN BY	A	07FEB06	KJR	DEV.	GEN. REV. PER 2479
MACHINED SURFACES TO BE 125 OR BETTER	ENGINEER	II	23JAN06	KJR	DEV.	INI. ISS. PER 2472
REMOVE ALL BURRS	KJR	REV	DATE	BY	DCN No.	REMARKS
ENGLISH (INCHES)	METRIC (MM)	SCALE	APPLIC: CERAMIC COAXIAL FILTER			
.XX ±.02	.X ±.50	4:1	TITLE: 7LLC1-600-L			
.XXX ±.010	.XX ±.25	DATE	07FEB06			
ANGLES ± 0° 30'	FINISH:		BOARD: NI/AU PLATED COPPER		DRAWING No.	
	COMNAV ENGINEERING INC		JACKET: NI/SILVER		0L0623	
					SHEET OF 1 1	

A