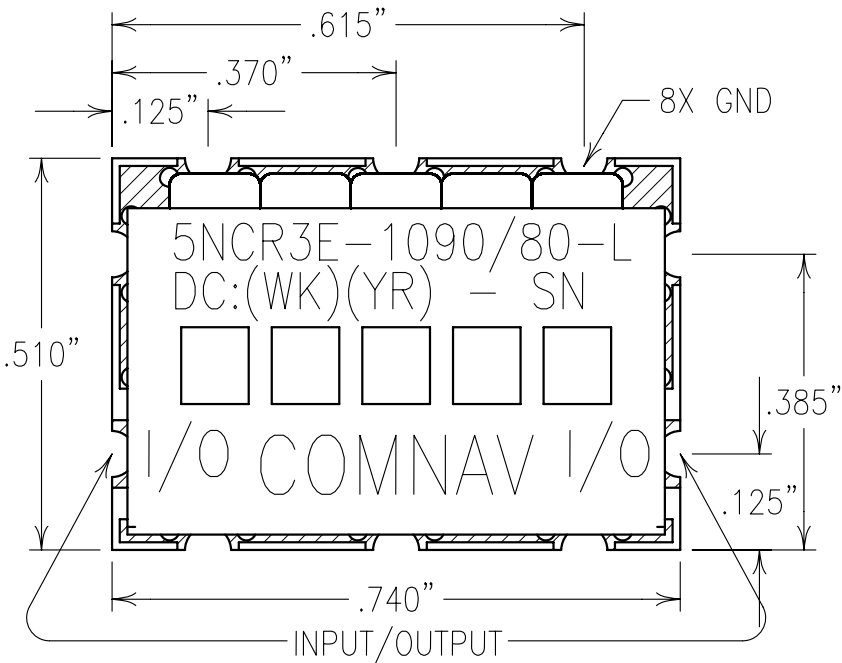
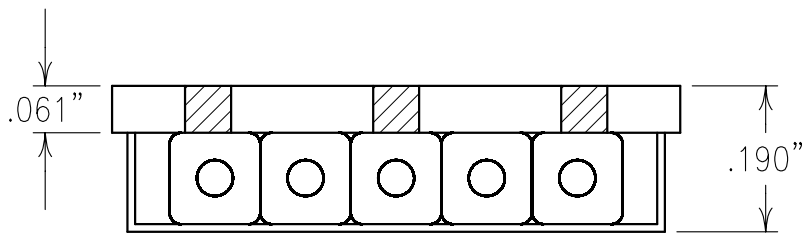


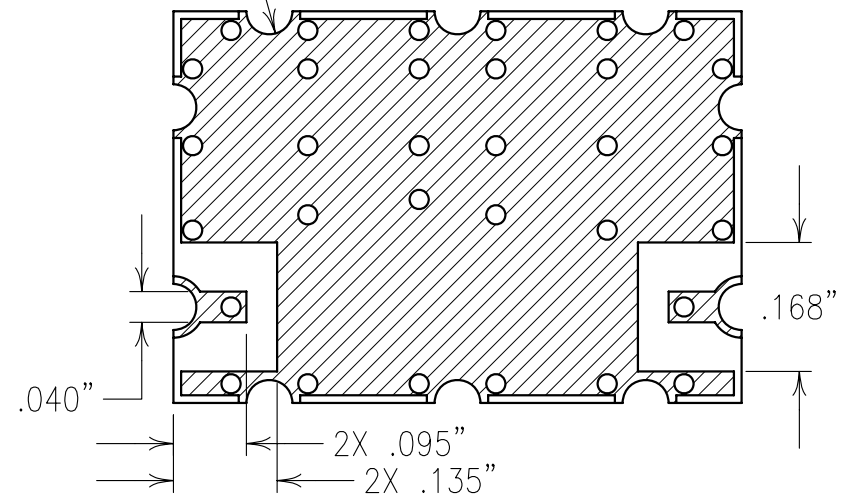
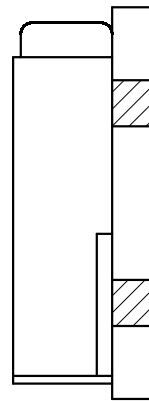
2

1



COPY

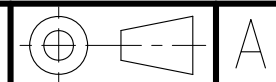
10X R.030"



ELECTRICAL CHARACTERISTICS

PASSBAND:	800-960 MHz 1300-2000 MHz
PASSBAND INSERTION LOSS:	1.5 dB MAX
PASSBAND VSWR:	1.5:1 MAX
IMPEDANCE:	50 OHMS
NOTCH FREQUENCIES:	1090±0.5 MHz
NOTCH DEPTH:	30 dB MIN
IIP3:	+30 dBm MIN
TEMPERATURE RANGE:	-40° TO +70°C

Confidential and Proprietary information of ComNav Engineering Inc. Do Not Duplicate or Use Without Permission. ComNav Engineering Inc. claims Copyright in this document as of the Creation, last revision, and last updated dates. All Rights Reserved.



NOTES:

RECOMMENDED ATTACHMENT METHOD: SILVER EPOXY
OR REFLOW NOT TO EXCEED AS INDICATED BELOW:

TEMP.(°C) MAX.TIME(SEC)

215	90
230	60
245	30
260	15

ENGLISH / METRIC ENGLISH		CHECKED BY				
TOLERANCES UNLESS OTHERWISE SPECIFIED MACHINED SURFACES TO BE 125/100 OR BETTER REMOVE ALL BURRS		DRAWN BY	A	29MAY07	KJR	DEV.
		ENGINEER	II	27SEP05	GML	DEV.
ENGLISH (INCHES) .XX ±.02 .XXX ±.01		METRIC (MM) .X ±.25 .XX ±.13		REV	DATE	BY
ANGLES ± 0° 30'		SCALE	4:1			
FINISH: BOARD: NI/AU JACKET: NI/SILVER RESONATOR: SILVER		DATE	29MAY07			
COMNAV ENGINEERING INC.		APPLIC:	CERAMIC COAXIAL FILTER			
		TITLE:	5NCR3E-1090/80-L			
		FINISH: BOARD: NI/AU JACKET: NI/SILVER RESONATOR: SILVER	DRAWING No.		SHEET/OF	
			0L0605		1 / 1	