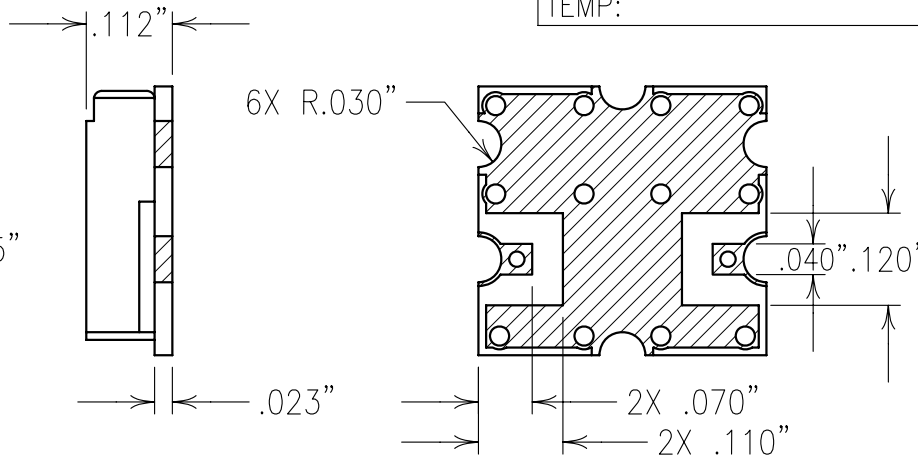
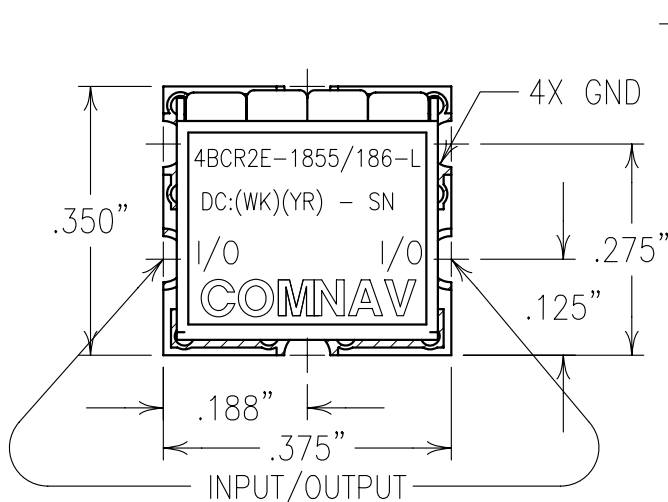
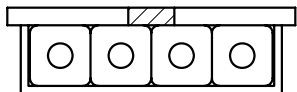


COPY

ELECTRICAL CHARACTERISTICS

CENTER FREQUENCY:	1855 MHz
PASSBAND:	1785-1925 MHz
PASSBAND INSERTION LOSS:	3 dB MAX
REJECTION:	
-40 dBc:	1000-1580 MHz
-40 dBc:	2200-3200 MHz
-25 dBc:	1580-1683 MHz
-25 dBc:	2145-2200 MHz
PASSBAND VSWR:	1.5:1 MAX
IMPEDANCE:	50 OHMS
IIP3:	+30 dBm MIN
TEMP:	-20° TO +70°C



Confidential and Proprietary information of ComNav Engineering Inc. Do Not Duplicate or Use Without Permission. ComNav Engineering Inc. claims Copyright in this document as of the Creation, last revision, and last updated dates. All Rights Reserved.

NOTES:

RECOMMENDED ATTACHMENT METHOD: SILVER EPOXY OR REFLOW NOT TO EXCEED AS INDICATED BELOW:

TEMP.(°C)	MAX.TIME(SEC)
215	90
230	60
245	30
260	15

ENGLISH / METRIC ENGLISH	CHECKED BY					
TOLERANCES UNLESS OTHERWISE SPECIFIED	DRAWN BY PBF	A	12JUL05	GML	DEV.	GEN. REV. PER 2400
MACHINED SURFACES TO BE 125 / OR BETTER	ENGINEER	II	14APR05	GML	DEV.	INI. ISS. PER 2361
REMOVE ALL BURRS	GML	REV	DATE	BY	DCN No.	REMARKS
ENGLISH (INCHES)	METRIC (MM)	SCALE 4:1	APPLIC: CERAMIC COAXIAL FILTER			
.XX ±.01 .XXX ±.005	.X ±.2 .XX ±.13	DATE 14JUL05	TITLE: 4BCR2E-1855/186-L			
ANGLES ± 0° 30'	FINISH: BOARD: NICKEL/GOLD JACKET: NICKEL/SILVER		DRAWING No. OL0582		SHEET OF 1 1	