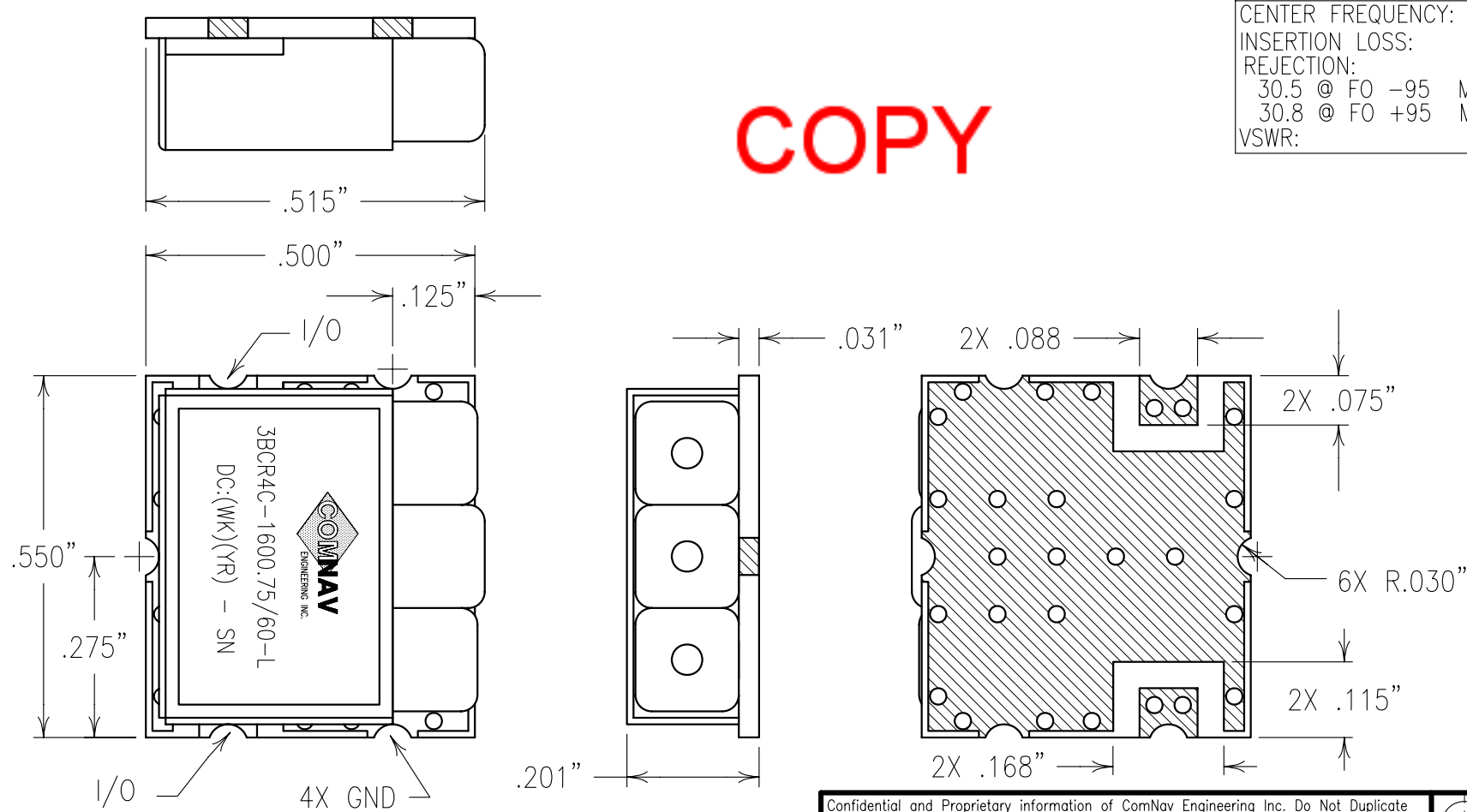


2

1

COPY

ELECTRICAL CHARACTERISTICS	
CENTER FREQUENCY:	1600.75 MHz
INSERTION LOSS:	1.1 dBc @ FO
REJECTION:	
30.5 @ FO -95	MHz
30.8 @ FO +95	MHz
VSWR:	1.7:1 TYP.



NOTES:
 FOR RECOMMENDED FOOTPRINT SEE FP0009.
 RECOMMENDED ATTACHMENT METHOD: SILVER EPOXY
 OR REFLOW NOT TO EXCEED AS INDICATED BELOW:
 TEMP.(°C) MAX.TIME(SEC)

215	90
230	60
245	30
260	15

Confidential and Proprietary information of ComNav Engineering Inc. Do Not Duplicate or Use Without Permission. ComNav Engineering Inc. claims Copyright in this document as of the Creation, last revision, and last updated dates. All Rights Reserved.

ENGLISH / METRIC ENGLISH	CHECKED BY						
TOLERANCES UNLESS OTHERWISE SPECIFIED	DRAWN BY	RME					
MACHINED SURFACES TO BE 125 / OR BETTER	ENGINEER	MJG	REV	DATE	BY	DCN No.	REMARKS
REMOVE ALL BURRS	MJG	II	17FEB05	MJG	DEV.		INI. ISS. PER 2340
ENGLISH (INCHES)	METRIC (MM)	SCALE	APPLIC: CERAMIC COAXIAL FILTER				
.XX ±.02	.X ±.25	4:1	TITLE: 3BCR4C-1600.75/60-L				
.XXX ±.010	.XX ±.13	DATE	DRAWING No. 0L0575				
ANGLES ± 0° 30'		17FEB05	SHEET OF 1 1				
COMNAV ENGINEERING INC.		FINISH: BOARD: NI/AU PLATED COPPER JACKET: NI/SILVER RESONATOR: SILVER			DRAWING No. 0L0575		