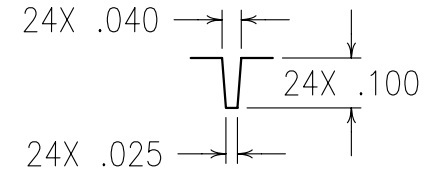
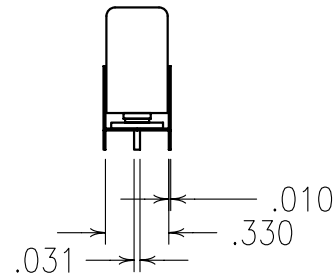
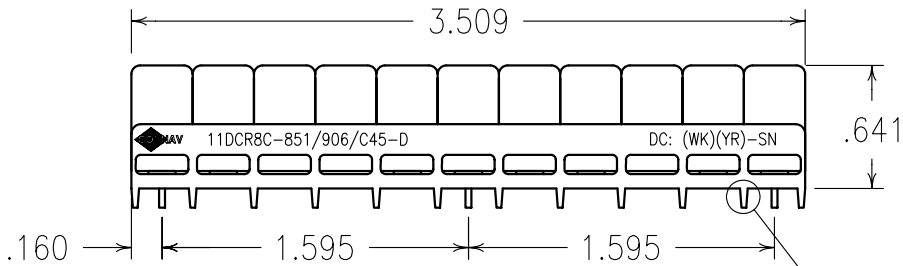


2

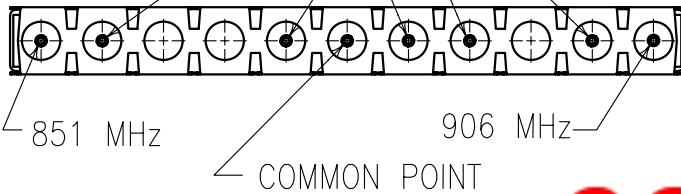
1



DETAIL A
SCALE 2:1

HIGH IMPEDANCE POINTS (NOTE 1)

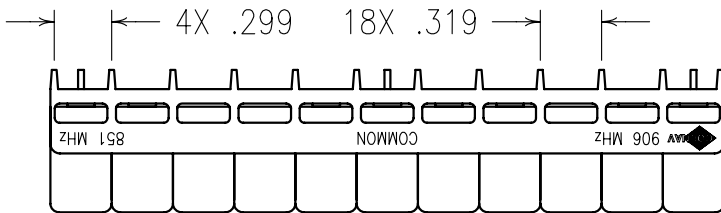
SEE DETAIL A



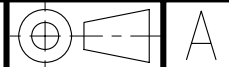
ELECTRICAL CHARACTERISTICS

	CHANNEL1	CHANNEL2
CENTER FREQUENCY (MHz):	851	906
PASSBAND (MHz):	832-870	887-925
PASSBAND LOSS (dB):	<2.2	<2.2
PASSBAND FLATNESS (dB):	<1.2	<1.2
PASSBAND VSWR:	1.7:1	1.7:1
>50 dBc REJECTION (MHz):	DC->800	DC->870
>50 dBc REJECTION (MHz):	887->2200	1000->2200
S23 (831-926 MHz) (dB):		>40
S23 (831-871, 886-926 MHz) (dB):		>50

COPY



Confidential and Proprietary information of ComNav Engineering Inc. Do Not Duplicate or Use Without Permission. ComNav Engineering Inc. claims Copyright in this document as of the Creation, last revision, and last updated dates. All Rights Reserved.



NOTES:

NOTE 1 THERE MUST BE A MINIMUM OF .050 AIR BETWEEN GROUND AND HIGH IMPEDANCE POINTS. THIS MAY BE DONE BY RAISING THE FILTER OR BY DRILLING OUT THE BOARD.

HAND OR WAVE SOLDERING.

MAX REFLOW TEMP. 240°C FOR 30 SEC., OR 260°C FOR 15 SEC.

FOR RECOMMENDED FOOTPRINT SEE FP0044.

ENGLISH / METRIC ENGLISH	CHECKED BY						
TOLERANCES UNLESS OTHERWISE SPECIFIED MACHINED SURFACES TO BE 125 / OR BETTER REMOVE ALL BURRS	DRAWN BY PBF						
	ENGINEER MJG	REV	DATE	BY	DCN No.	REMARKS	
ENGLISH (INCHES) .XX ±.02 XXX ±.010	METRIC (MM) .X ±.25 .XX ±.13	SCALE 2:1	APPLIC: CERAMIC COAXIAL FILTER				
ANGLES ± 0° 30'	DATE 04NOV04	TITLE: 11DCR8C-851/906/C45-D					
FINISH: BOARD:TIN PLATED COPPER JACKET:NI/SILVER RESONATOR:SILVER						DRAWING No. 0L0566	SHEET OF 1 1

B

A