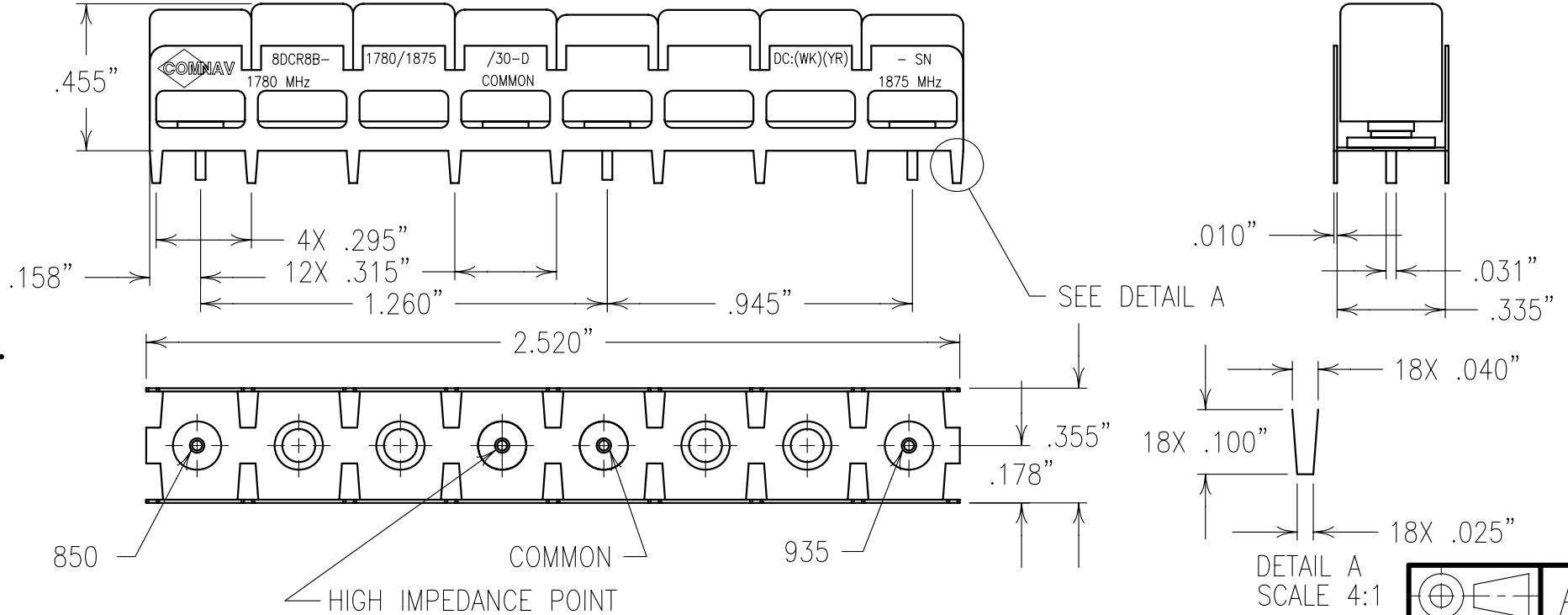


COPY

ELECTRICAL CHARACTERISTICS

PORT 1
 CENTER FREQUENCY: 1780 MHz
 PASSBAND: 1775/1785 MHz
 PASSBAND @ 3dB: 30 MHz
 INSERTION LOSS: <1.5 dB
 VSWR: <1.5:1
 REJECTION:
 >25 dBc: 1640 MHz
 >50 dBc: 1870/1880 MHz

PORT 2
 CENTER FREQUENCY: 1875 MHz
 PASSBAND: 1870/1880 MHz
 PASSBAND @ 3dB: 30 MHz
 INSERTION LOSS: <1.5 dB
 VSWR: <1.5:1
 REJECTION:
 >25 dBc: 2015 MHz
 >50 dBc: 1775/1785 MHz



Confidential and Proprietary information of ComNav Engineering Inc. Do Not Duplicate or Use Without Permission. ComNav Engineering Inc. claims Copyright in this document as of the Creation, last revision, and last updated dates. All Rights Reserved.

NOTES:
 1) DC: IS ON ONE SIDE ONLY.
 2) THERE MUST BE A MINIMUM OF .050 AIR SPACE BETWEEN GROUND AND HIGH IMPEDANCE POINTS. THIS MAY BE ACCOMPLISHED BY RAISING THE FILTER OR DRILLING OUT THE BOARD. FOR RECOMMENDED FOOTPRINT SEE FP0100.

ENGLISH / METRIC ENGLISH		CHECKED BY					
TOLERANCES UNLESS OTHERWISE SPECIFIED		DRAWN BY					
MACHINED SURFACES TO BE 125 / OR BETTER		PBF		II	04OCT04	MJG	DEV. INI. ISS. PER 2297
REMOVE ALL BURRS		ENGINEER		REV	DATE	BY	DCN No. REMARKS
ENGLISH (INCHES)		METRIC (MM)		SCALE 2:1			
.XX ±.02		.X ±.25		APPLIC: CERAMIC COAXIAL FILTER			
.XXX ±.010		.XX ±.13		TITLE: 8DCR8B-1780/1875/30-D			
ANGLES ± 0° 30'		DATE 04OCT04		DRAWING No. 0L0563			
COMNAV ENGINEERING INC.		FINISH: BOARD: TIN PLATED COPPER JACKET: NI/SILVER RESONATOR: SILVER		SHEET OF 1 1			