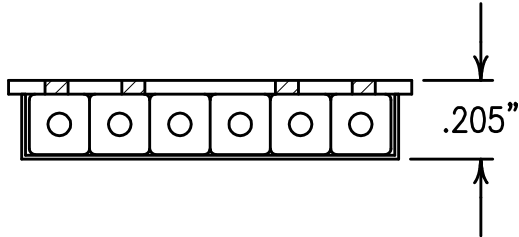


2

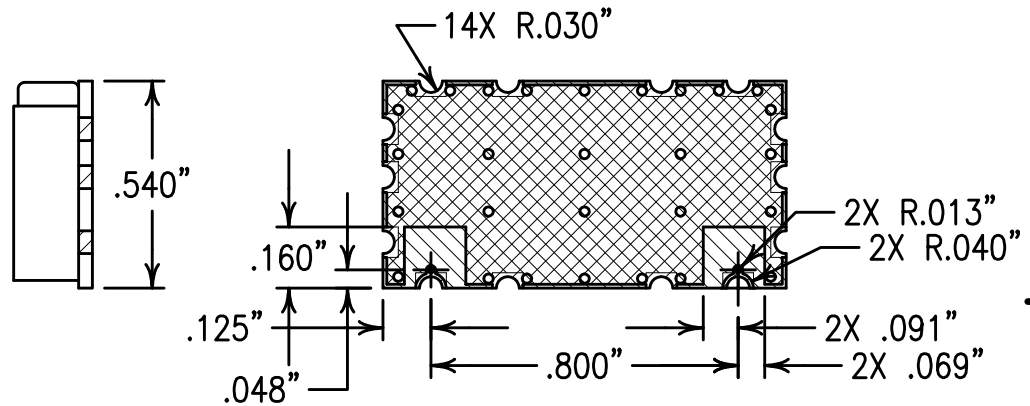
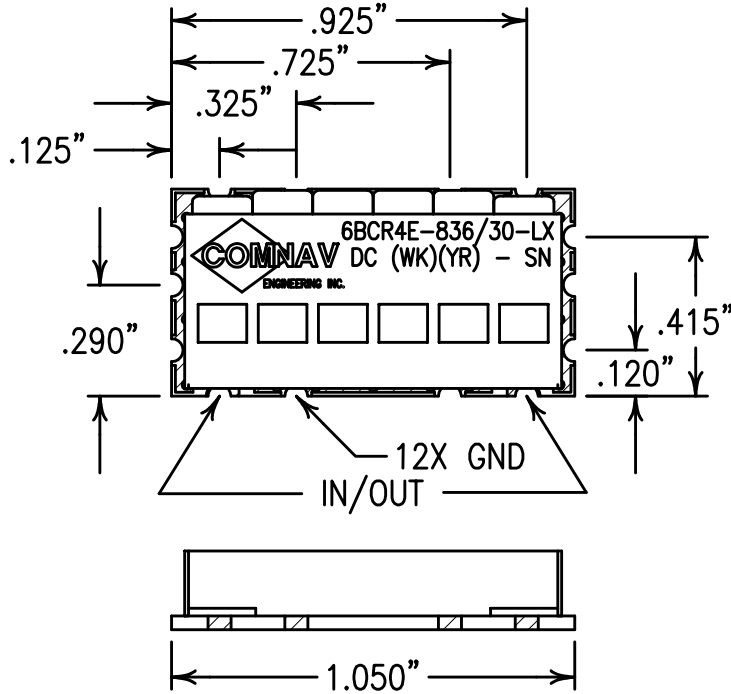
1



COPY

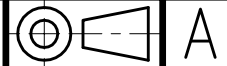
ELECTRICAL CHARACTERISTICS

CENTER FREQUENCY:	836 MHz
3 dB BANDWIDTH:	30 MHz MIN
PASSBAND:	824-848 MHz
LOSS AT FO:	<4.0
PASSBAND VSWR:	<1.5:1
PASSBAND FLATNESS:	<1.0 dB
REJECTION:	
70 dBc MIN:	976 MHz
65 dBc MIN:	766, 906 MHz
50 dBc MIN:	796 MHz
45 dBc MIN:	876 MHz



SOLDER MASK
 COPPER

Confidential and Proprietary information of ComNav Engineering Inc. Do Not Duplicate or Use Without Permission. ComNav Engineering Inc. claims Copyright in this document as of the Creation, last revision, and last updated dates. All Rights Reserved.



NOTES:

FOR RECOMMENDED FOOTPRINT SEE FP0092.
 NO TIN PLATING UNDER SOLDER MASK.
 RECOMMENDED ATTACHMENT METHOD: SILVER EPOXY
 OR REFLOW NOT TO EXCEED AS INDICATED BELOW:

TEMP.(°C) MAX.TIME(SEC)

215	90
230	60
245	30
260	15

ENGLISH / METRIC ENGLISH		CHECKED BY					
TOLERANCES UNLESS OTHERWISE SPECIFIED		DRAWN BY					
MACHINED SURFACES TO BE 125/ OR BETTER REMOVE ALL BURRS		PBF		II	27APR04	MJG	DEV.
		ENGINEER		REV	DATE	BY	DCN No.
		MJG		REMARKS			
ENGLISH (INCHES)	METRIC (MM)	SCALE		APPLIC:			
.XX ±.02	.X ±.25	2:1		CERAMIC COAXIAL FILTER			
.XXX ±.010	.XX ±.13	DATE		TITLE:			
ANGLES ± 0° 30'		04MAY04		6BCR4E-836/30-LX			
FINISH: BOARD: NI/AU PLATED COPPER		DRAWING No.		SHEET OF			
JACKET: NI/SILVER		0L0544		1 1			
RESONATOR: SILVER							