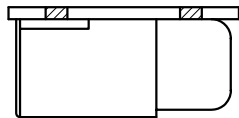


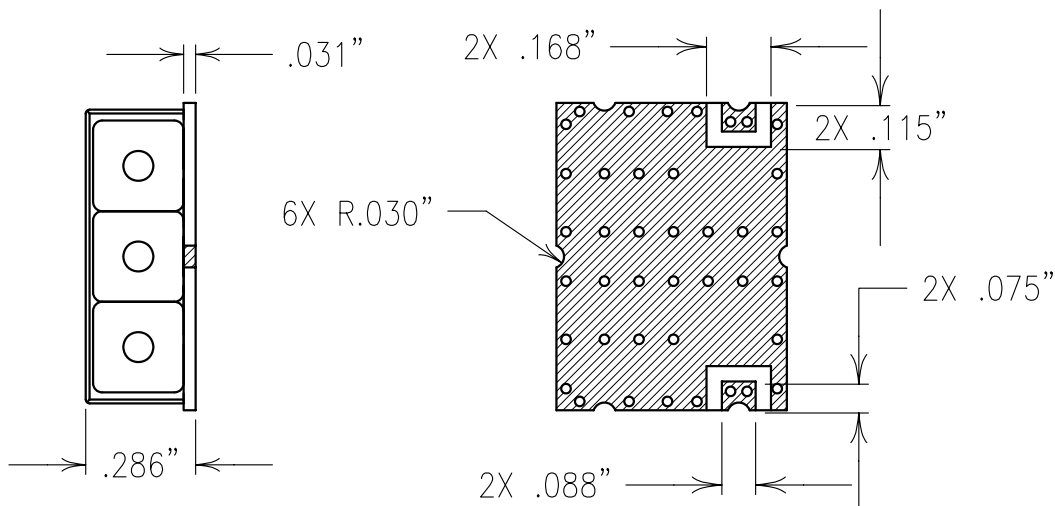
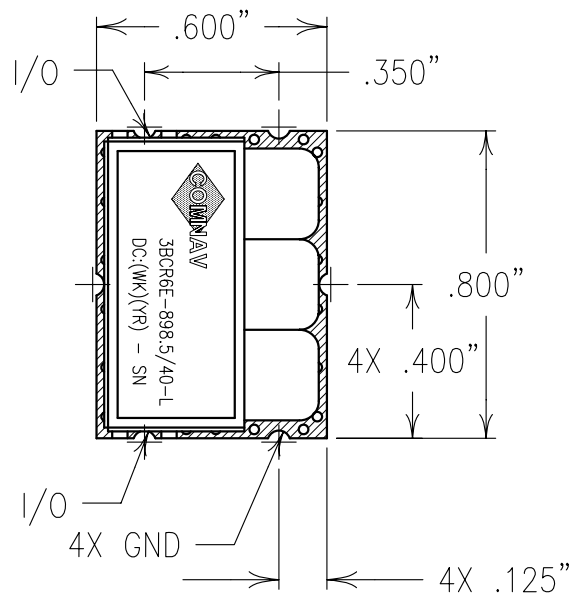
2

1



COPY

ELECTRICAL CHARACTERISTICS	
CENTER FREQUENCY:	898.5 MHz
PASSBAND FREQ.:	896-901 MHz
PASSBAND ATTEN.:	<1.5 dB
RIPPLE:	<0.25 dB
PASSBAND VSWR:	1.5:1 MAX.
STOPBAND ATTENUATION:	
>10 dB:	860-865 MHz
>40 dB:	752-757 MHz
>10 dB:	935-940 MHz
OPERATING TEMP.:	-40° TO +85°C
IMPEDANCE:	50 OHMS



Confidential and Proprietary information of ComNav Engineering Inc. Do Not Duplicate or Use Without Permission. ComNav Engineering Inc. claims Copyright in this document as of the Creation, last revision, and last updated dates. All Rights Reserved.

NOTES:
 FOR RECOMMENDED FOOTPRINT SEE FP0028.
 RECOMMENDED ATTACHMENT METHOD: SILVER EPOXY
 OR REFLOW NOT TO EXCEED AS INDICATED BELOW:
 TEMP.(°C) MAX.TIME(SEC)

215	90
230	60
245	30
260	15

ENGLISH / METRIC ENGLISH	CHECKED BY						
TOLERANCES UNLESS OTHERWISE SPECIFIED	DRAWN BY						
MACHINED SURFACES TO BE 125 OR BETTER	ENGINEER	II	10MAR04	MJG	DEV.		INI. ISS. PER 2194
REMOVE ALL BURRS	MJG	REV	DATE	BY	DCN No.		REMARKS
ENGLISH (INCHES)	METRIC (MM)	SCALE	APPLIC: CERAMIC COAXIAL FILTER				
.XX ±.02	.X ±.5	2:1	TITLE: 3BCR6E-898.5/40-L				
.XXX ±.010	.XX ±.25	DATE	11MAR04				
ANGLES ± 0° 30'		FINISH:	BOARD: NI/AU PLATED COPPER				DRAWING No.
		JACKET: NI/SILVER	RESONATOR: SILVER				0L0529
							SHEET OF 1 1