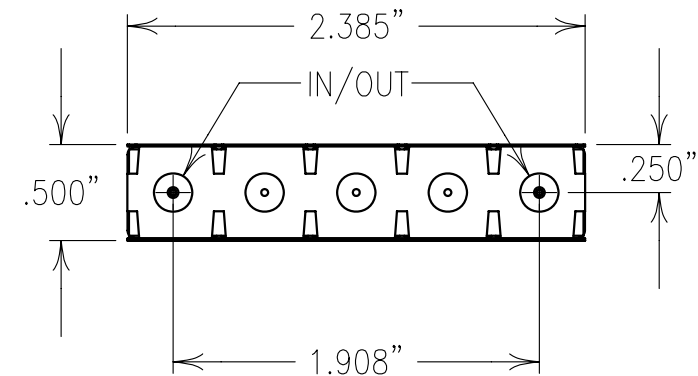
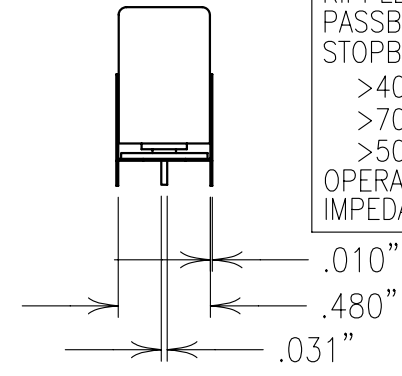
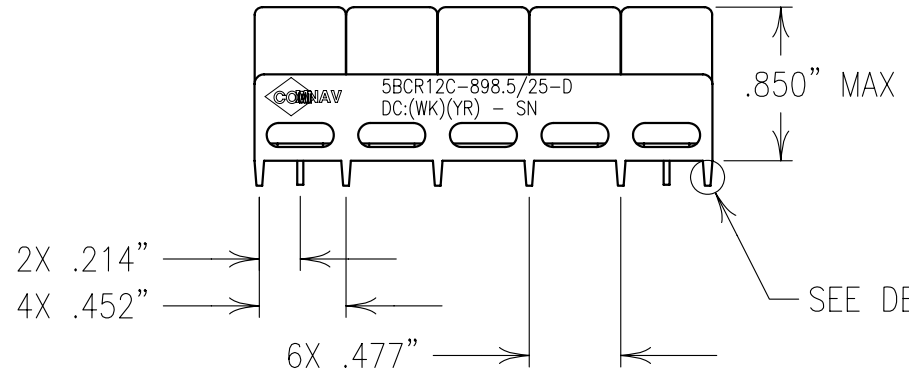
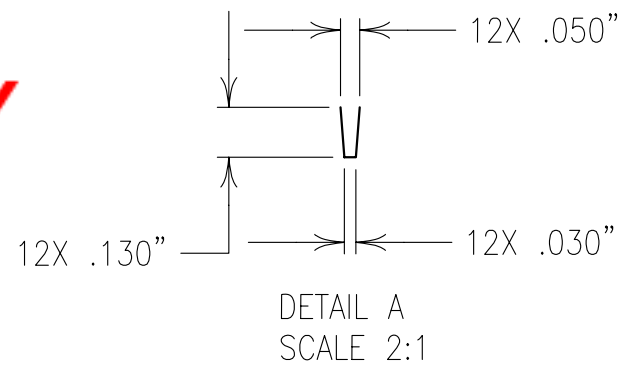


ELECTRICAL CHARACTERISTICS	
CENTER FREQUENCY:	898.5 MHz
PASSBAND FREQ.:	896-901 MHz
PASSBAND ATTEN.:	<1.5 dB
RIPPLE:	<0.25 dB
PASSBAND VSWR:	1.5:1 MAX.
STOPBAND ATTENUATION:	
>40 dB:	860-865 MHz
>70 dB:	752-757 MHz
>50 dB:	935-940 MHz
OPERATING TEMP.:	-40° TO +85°C
IMPEDANCE:	50 OHMS



COPY



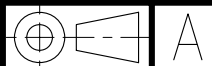

NOTES:

DC: IS ON ONE SIDE ONLY.

PART MAY BE EXPOSED TO 240°C FOR 30 SEC.,
OR 260°C FOR 15 SEC.

FOR BEST RESULTS HAND OR WAVE SOLDERING IS SUGGESTED.

FOR RECOMMENDED FOOTPRINT SEE FP0076.

Confidential and Proprietary information of ComNav Engineering Inc. Do Not Duplicate or Use Without Permission. ComNav Engineering Inc. claims Copyright in this document as of the Creation, last revision, and last updated dates. All Rights Reserved.					
ENGLISH / METRIC ENGLISH	CHECKED BY				
TOLERANCES UNLESS OTHERWISE SPECIFIED	DRAWN BY	II	10MAR04	MJG	DEV.
MACHINED SURFACES TO BE 125 / OR BETTER	ENGINEER	REV	DATE	BY	DCN No.
REMOVE ALL BURRS	MJG				REMARKS
ENGLISH (INCHES)	METRIC (MM)	SCALE	APPLIC:		
.XX ±.02	.X ±.50	1:1	CERAMIC COAXIAL FILTER		
.XXX ±.010	.XX ±.25	DATE	TITLE:		
ANGLES ± 0° 30'	11MAR04		5BCR12C-898.5/25-D		
	FINISH:	DRAWING No.		SHEET OF	
	JACKET: NI/SILVER RESONATOR: SILVER PINS: TIN PLATED	0L0528		1 1	