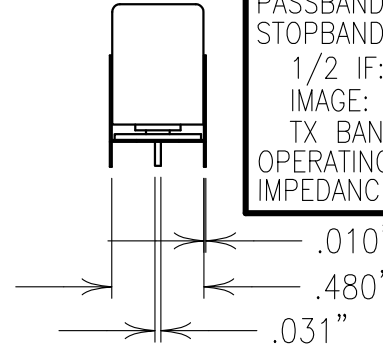
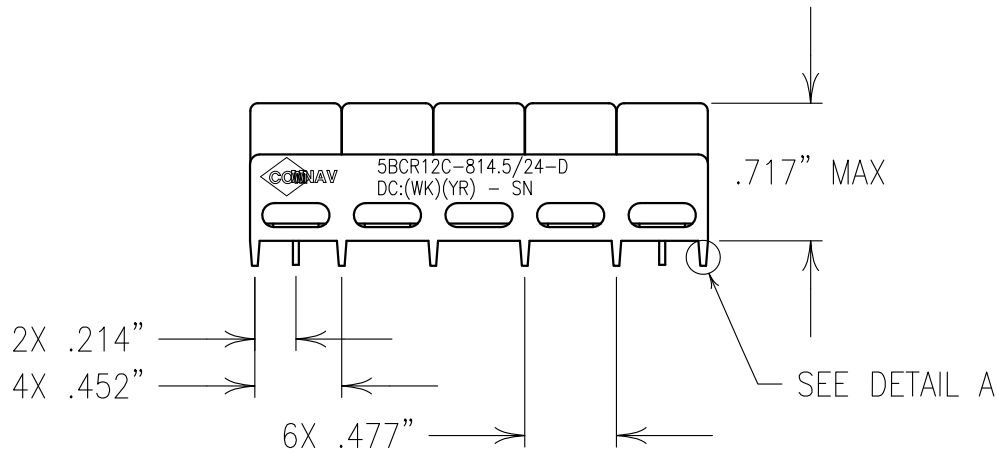


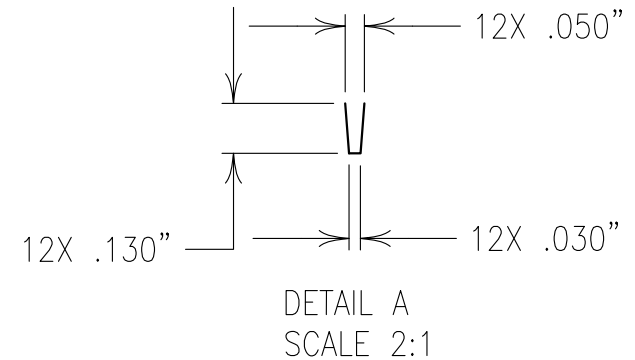
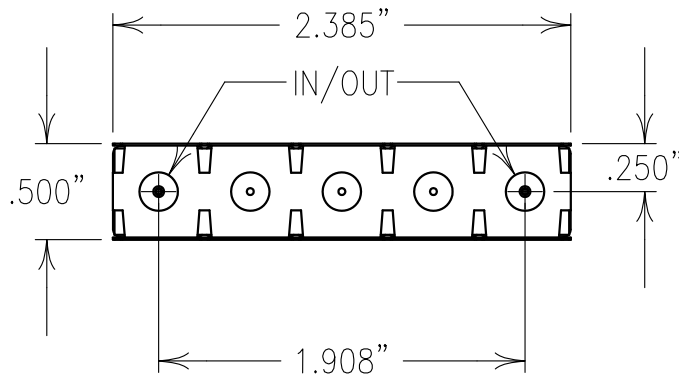
2

1

ELECTRICAL CHARACTERISTICS	
CENTER FREQUENCY:	814.5 MHz
PASSBAND FREQ.:	806-825 MHz
PASSBAND ATTEN.:	<1.8 dB
RIPPLE:	<0.75 dB
PASSBAND VSWR:	1.5:1 MAX.
STOPBAND ATTENUATION:	
1/2 IF:	>39 dB @ 770-789 MHz
IMAGE:	>70 dB @ 662-681 MHz
TX BAND:	>50 dB @ 851-870 MHz
OPERATING TEMP.:	-30° TO +75°C
IMPEDANCE:	50 OHMS



COPY



NOTES:

DC: IS ON ONE SIDE ONLY.
 PART MAY BE EXPOSED TO 240°C FOR 30 SEC.,
 OR 260°C FOR 15 SEC.
 FOR BEST RESULTS HAND OR WAVE SOLDERING IS SUGGESTED.
 FOR RECOMMENDED FOOTPRINT SEE FP0076.

Confidential and Proprietary information of ComNav Engineering Inc. Do Not Duplicate or Use Without Permission. ComNav Engineering Inc. claims Copyright in this document as of the Creation, last revision, and last updated dates. All Rights Reserved.						
ENGLISH / METRIC ENGLISH	CHECKED BY					
TOLERANCES UNLESS OTHERWISE SPECIFIED	DRAWN BY	A	07MAR12	EJG	DEV.	GEN. REV. PER 3511
MACHINED SURFACES TO BE 125 OR BETTER REMOVE ALL BURRS	ENGINEER	II	08OCT03	MJG	DEV.	INI. ISS. PER 2121
	KJR	REV	DATE	BY	DCN No.	REMARKS
ENGLISH (INCHES)	METRIC (MM)	SCALE	APPLIC: CERAMIC COAXIAL FILTER			
.XX ±.02 .XXX ±.010	.X ±.50 .XX ±.25	1:1	DATE	TITLE: 5BCR12C-814.5/24-D		
ANGLES ± 0° 30'		07MAR12				
	FINISH:	JACKET: NI/SILVER RESONATOR: SILVER PINS: TIN PLATED			DRAWING No.	SHEET OF 1 1
					0L0485	