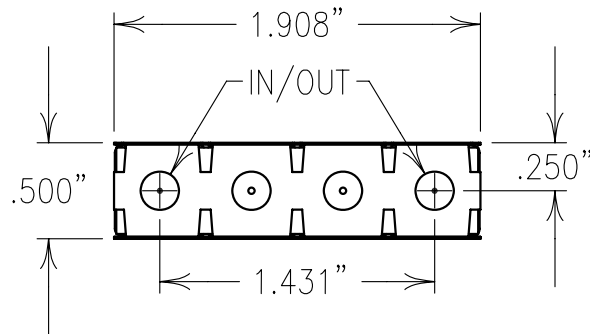
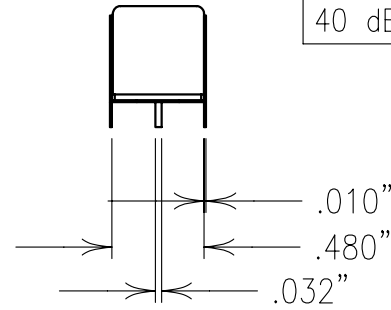
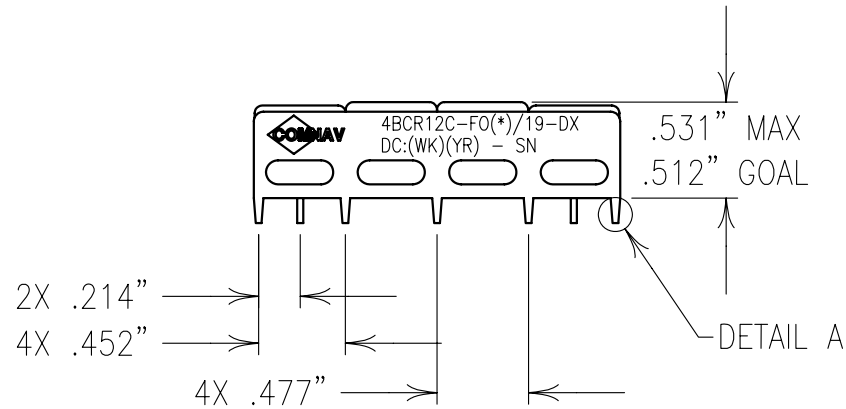
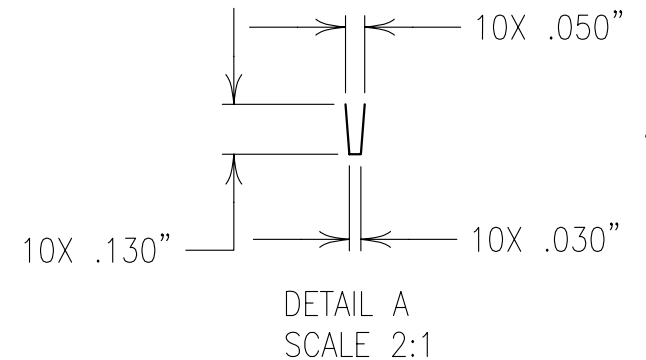


ELECTRICAL CHARACTERISTICS

CENTER FREQUENCY FO(*):	1030,1090 MHz
3 dB BANDWIDTH:	19 MHz
LOSS @ FO:	<1.5 dB
VSWR:	1.5:1 TYP
40 dBc REJECTION:	FO±36 MHz



COPY



NOTES:

DC: IS ON ONE SIDE ONLY.

PART MAY BE EXPOSED TO 240°C FOR 30 SEC.,
OR 260°C FOR 15 SEC.

FOR BEST RESULTS HAND OR WAVE SOLDERING IS SUGGESTED.

Confidential and Proprietary information of ComNav Engineering Inc. Do Not Duplicate or Use Without Permission. ComNav Engineering Inc. claims Copyright in this document as of the Creation, last revision, and last updated dates. All Rights Reserved.							
ENGLISH / METRIC ENGLISH	CHECKED BY						
TOLERANCES UNLESS OTHERWISE SPECIFIED	DRAWN BY	A	23MAR05	MJG	DEV.	GEN. REV. PER 2350	
MACHINED SURFACES TO BE 125 /OR BETTER	ENGINEER	II	17JUN03	MJG	DEV.	INI. ISS. PER 2085	
REMOVE ALL BURRS	ENGINEER	REV	DATE	BY	DCN No.	REMARKS	
ENGLISH (INCHES)	METRIC (MM)	SCALE	APPLIC:				
.XX ±.02	.X ±.50	1:1	CERAMIC COAXIAL FILTER				
.XXX ±.010	.XX ±.25	DATE	TITLE:				
ANGLES ± 0° 30'		23MAR05	4BCR12C-FO(*)/19-DX				
		FINISH: JACKET: NI/SILVER RESONATOR: SILVER PINS: TIN PLATED				DRAWING No. 010470	
						SHEET OF 1 1	